

# WAN NNAN

*La Wa Ai Lam*

Written by Kachin Orature Project

Illustrations by Shawanang

Supervised by Keita Kurabe

Kachin Folktale 26  
**WAN NNAN LA WA AI LAM**

Text © Kachin Orature Project 2023.  
Illustrations © Shawanang 2023.  
Supervised by Keita Kurabe  
Layout by Sa Rit

Based on D. Tu Ja (speaker), Keita Kurabe (depositor), 2017. Wan nnan la wa ai lam (The first fire) with English translation. MPEG/X-WAV/XML. KK1-1384 at catalog.paradisec.org.au. <https://dx.doi.org/10.4225/72/598b377831acb>

First published 2023

Published by  
Research Institute for Languages and Cultures of Asia and Africa (ILCAA)  
Tokyo University of Foreign Studies  
3-11-1, Asahi-cho, Fuchu-shi, 183-8534, Tokyo, JAPAN

ISBN 978-4-86337-434-8

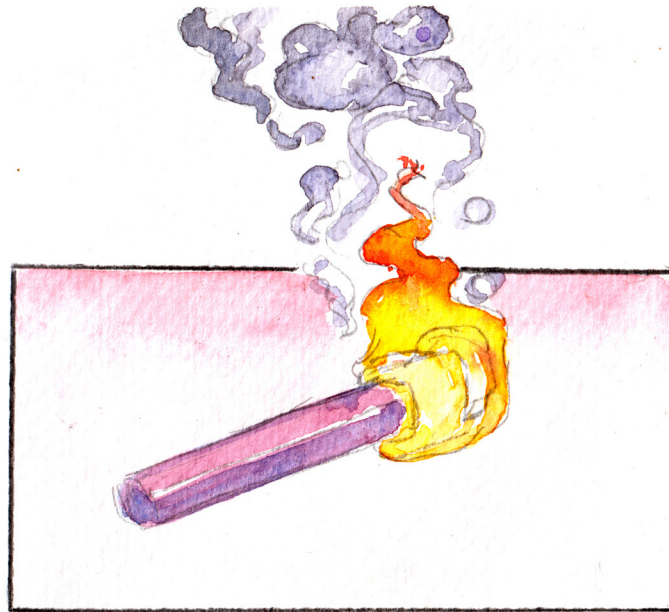
This work was supported by  
- TUFs Field Science Commons  
- JSPS KAKENHI Grant Number JP20K13024  
- Description and Documentation of Language Dynamics in Asia and Africa (DDDLing), Research Institute for Languages and Cultures of Asia and Africa (ILCAA), Tokyo University of Foreign Studies



This work is licensed under a Creative Commons Attribution 4.0 International License.  
<https://creativecommons.org/licenses/by/4.0/>



# WAN NNAN LA WA AI LAM



Written by Kachin Orature Project

Illustrations by Shawanang

Supervised by Keita Kurabe

Ya hkai na maumwi gaw “Shinggyim masha ni wan nnan la wa ai lam” re.

Moi shawng de, shinggyim masha ni gaw lu sha katsing hkrai sha jin wa nna,

lani mi gaw wan tam sa ma ai da.



Dai hku tam let zinlawng langai mi kaw wan chyi nga ai mu ai da.

Dai shaloi shanhte gaw

“Ga... wora kaw wan hkut grai mawng nga ai.”

“Kaning di la mai na kun?” ngu tsun hkat ma ai da.

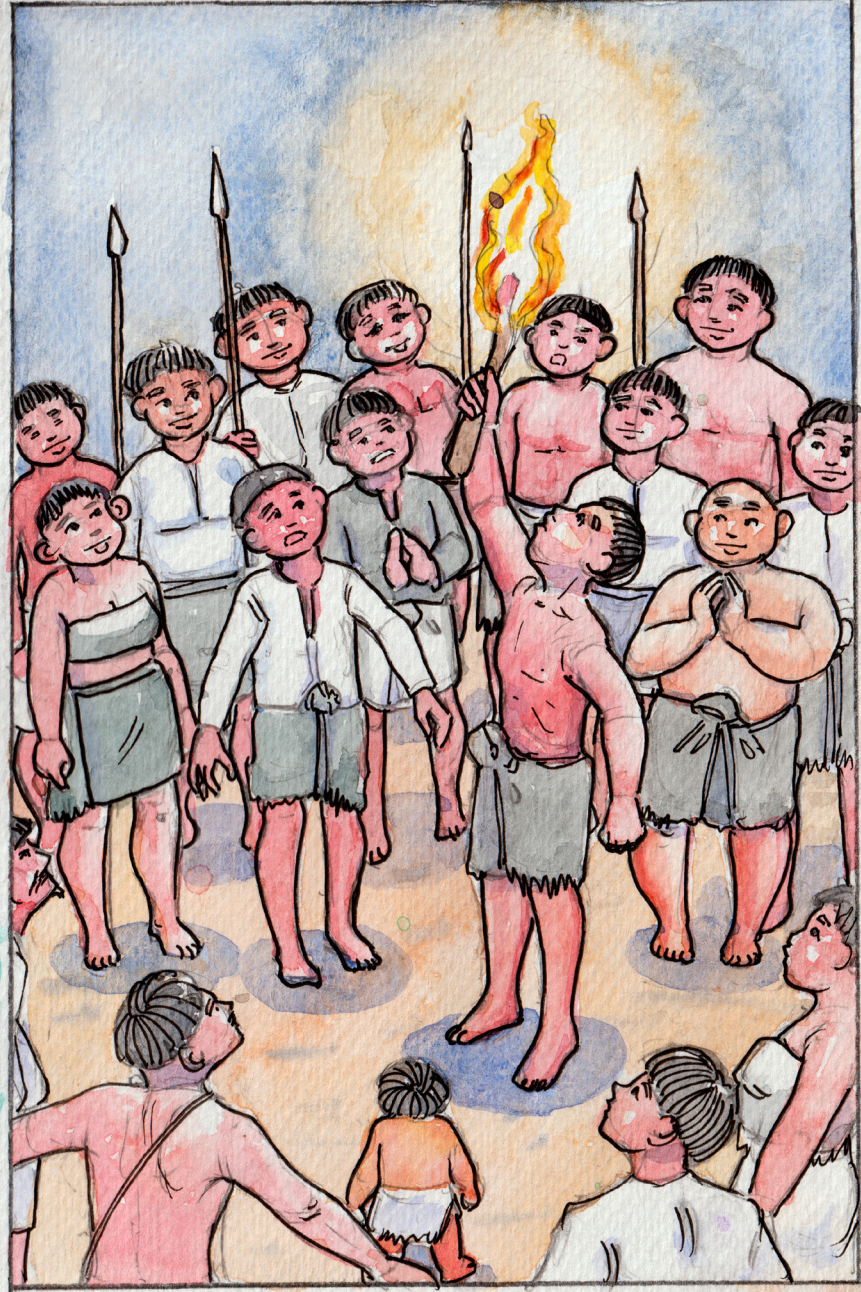


Dai shaloi hpun lung mung grai byin, hka hpung yawt mung grai byin  
ai Sam Naw shabrang wa gaw

“Hka! Ngai wa la na,” ngu nna

wan dai hpe sa la nna shadu lu shadu sha ma ai da.





Rai ti mung dai wan hpe nta nhku de bai jashawn yang, nta hkru mat wa ai da.

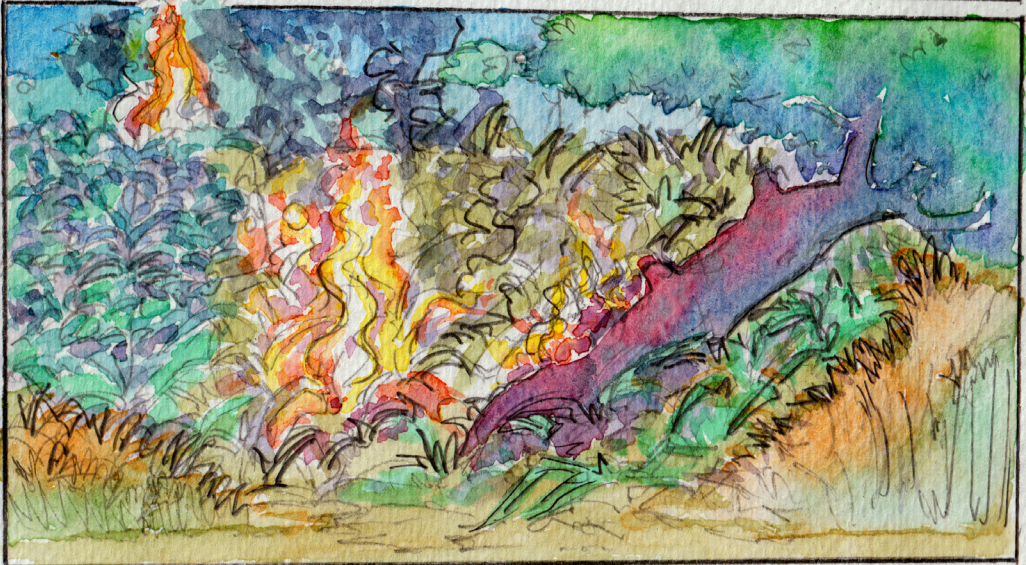
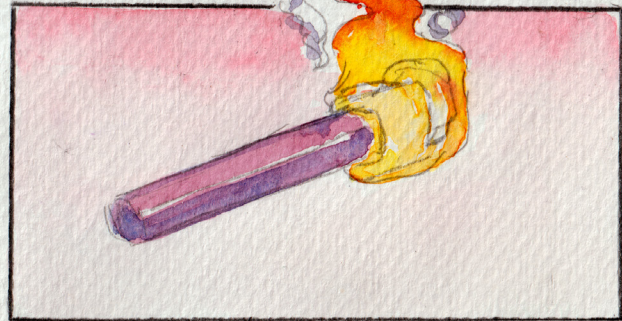
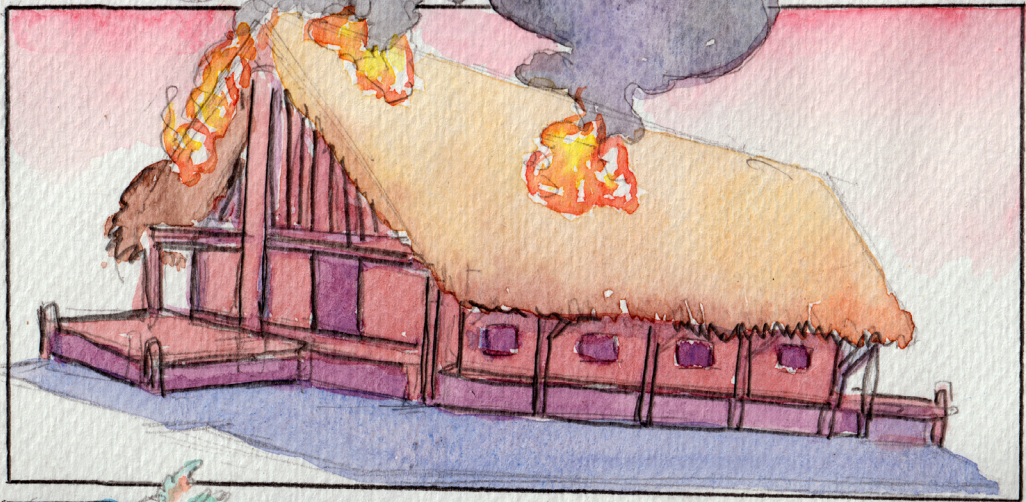
Kaga hkraw ai shara hkan, tsip hkan mung n mai tawn da ai da.



Hkru chyu hkru bang wa ai da.

Hpun tawng kaw sha shachyi mai ai hte

hpang e gaw ga de bai lup kau ra rai nna grai jamjau nga yak ma ai da.



Dai majaw lani mi gaw “Myi htoi bai shayu yu ga. Myi htoi ni kaw bai san yu ga,” ngu nna

wa san la yang kaning nga ai i nga yang,

“Nanhte mahku wan ra yang gaw Kareng Tu Lawt hte N-gang Htu But hpe wan gang gang na tam la mu,” ngu ai da.

Dai hku nga ai hte kaja sha Kareng Tu Lawt hte N-gang Htu But shan hpe wan nsu mung hkut la di nna,

kawa chyen kaw shakap la nna wan gang gang bang wa yang she dai kaw na wan chyi pruwai da.

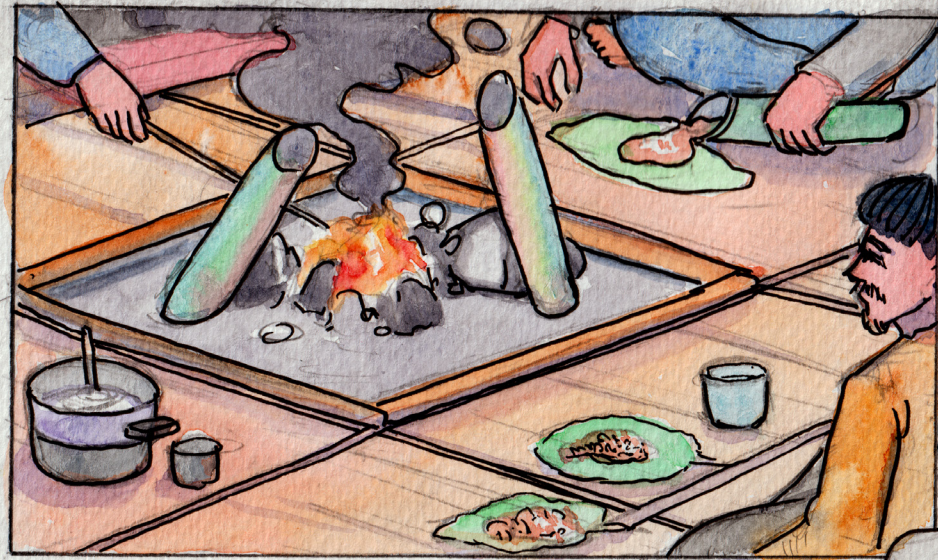


Dai wan chyi ai kaw na bai shalat la ai wan gaw

nhku de mung mai lang, shara magup mai lang re ai wan tai wa ai da.

Dai shani kaw na shinggyim masha ni wan hte atsawm sha lu ganawn  
nna lu pra sa wa ai re.









# WUNPAWNG MAUMWI MAUSA

Kachin Folktales

