



WAN HKRU

SI HPANG AI LAM

Written by Kachin Orature Project

Illustrations by Shawanang

Supervised by Keita Kurabe

Kachin Folktale 27

WAN HKRU SI HPANG AI LAM

Text © Kachin Orature Project 2023.

Illustrations © Shawanang 2023.

Supervised by Keita Kurabe

Layout by Sa Rit

Based on M. King Nang (speaker), Keita Kurabe (depositor), 2017. Shinggyim masha ni wan hkru si hpang wa ai lam (The first burnt to death) with English translation. X-WAV/MPEG/XML. KK1-2220 at catalog.paradisec.org.au. <https://dx.doi.org/10.26278/5fa176bb873f9>

First published 2023

Published by

Research Institute for Languages and Cultures of Asia and Africa (ILCAA)

Tokyo University of Foreign Studies

3-11-1, Asahi-cho, Fuchu-shi, 183-8534, Tokyo, JAPAN

ISBN 978-4-86337-435-5

This work was supported by

- TUFSC Field Science Commons
- JSPS KAKENHI Grant Number JP20K13024
- Description and Documentation of Language Dynamics in Asia and Africa (DDDLing), Research Institute for Languages and Cultures of Asia and Africa (ILCAA), Tokyo University of Foreign Studies



This work is licensed under a Creative Commons Attribution 4.0 International License.

<https://creativecommons.org/licenses/by/4.0/>



WA HKRU SI HPANG AI LAM



Written by Kachin Orature Project

Illustrations by Shawanang

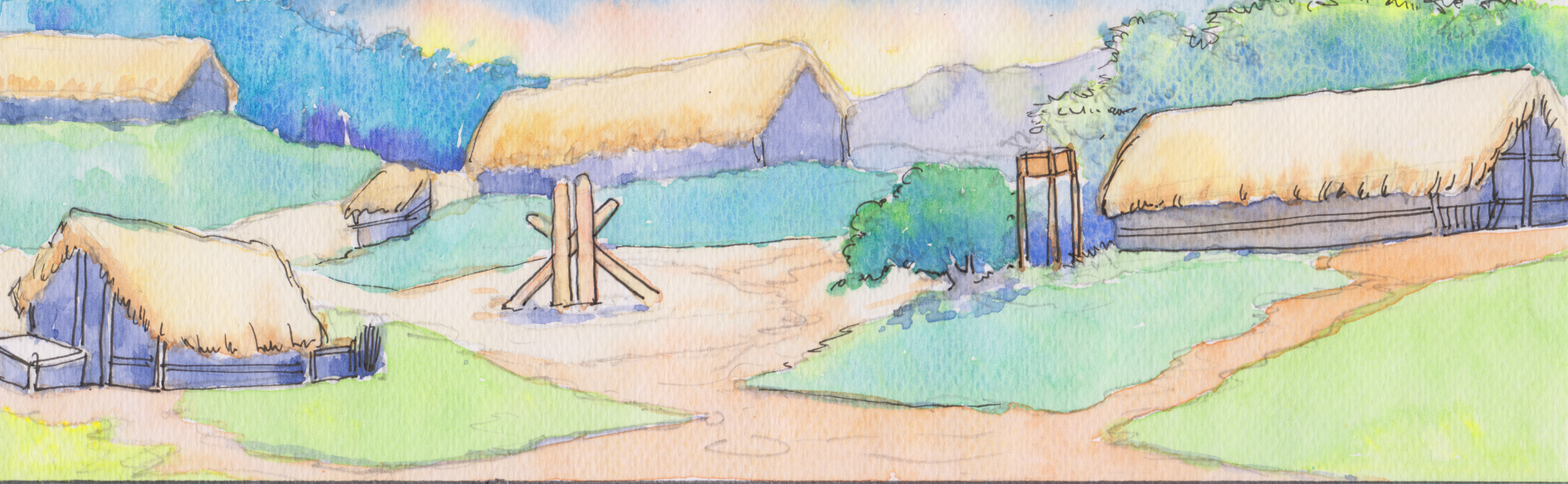
Supervised by Keita Kurabe

Ya hkai na maumwi gaw “Shinggyim masha ni wan hkru si hpang wa ai lam” nga ai re.

Moi shawng de mare kahtawng langai mi hta, Nga Dankang hte Yu Dankang sha ni nga ai da.

Dai hku nga ai aten hta, hpan wa saga gaw shinggyim masha ni hpe yu nga tam na matu matsun dat ai da.

Dai hku matsun dat ai shaloi, Mauhte wa ngu ai la wa gaw hpan wa saga matsun dat ai hte maren, yu nga tam na matu sa mat wa ai da.



Dai hku sa mat wa ai shaloi, Mauhte wa gaw hka mahkrai langai mi kaw lai sa mat wa ai da.

Dai hku lai sa mat wa ai shaloi, wora Yu Danhkang hte Nga Danhkang ni gaw Mauhte wa yu nga tam sa ai lam hpe chye ma ai da.

Mauhte wa hku nna ndai lam hku sha bai wa na hpe shanhte gaw chye ai da.



Dai majaw mahkrai dai hpe le kata maga de krawk da ai da.

Shana maga du yang, Mauhte wa gaw yu nga tam nna bai wa nna
dai mahkrai kaw rap lai wa ai da.



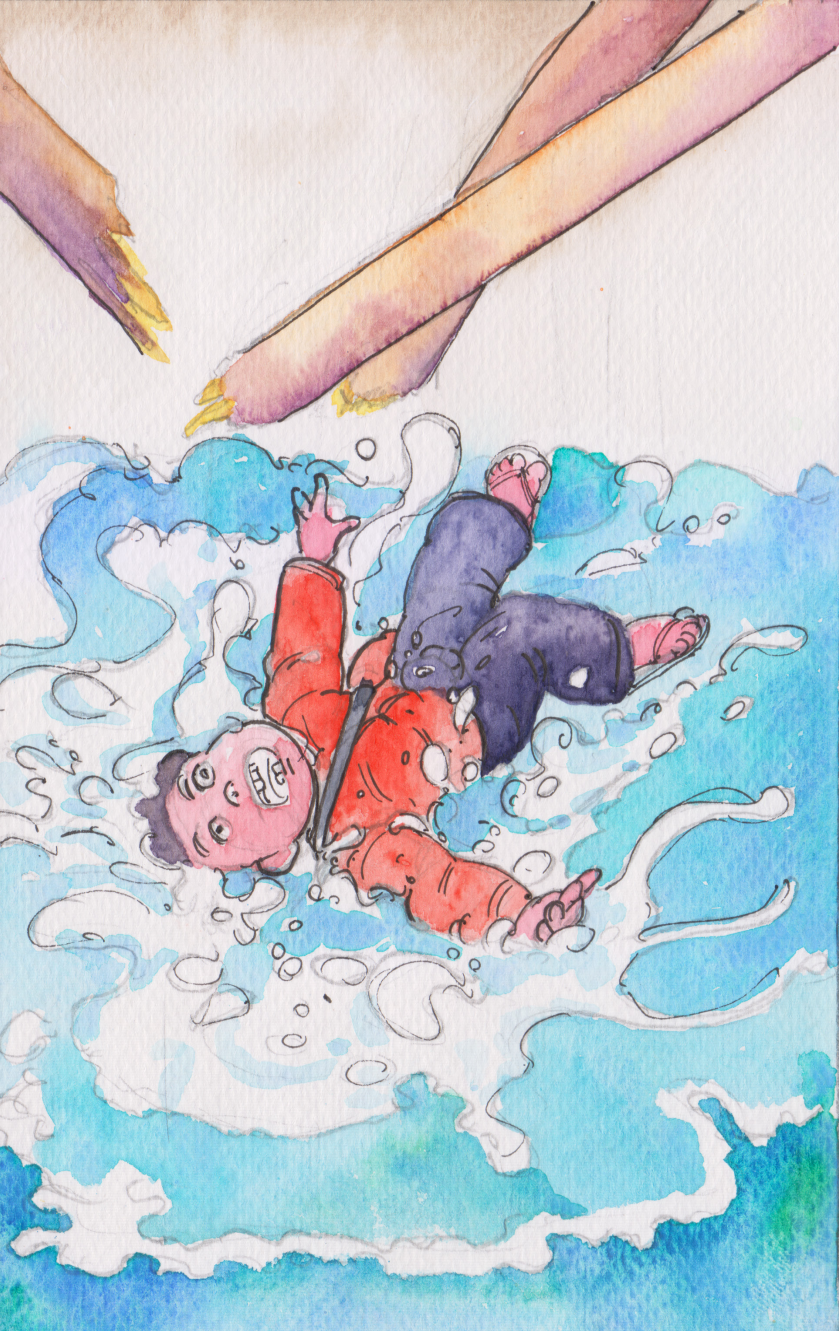
Dai hku rap lai wa ai shaloi, dai mahkrai gaw krawk da ai majaw,
mahkrai daw mat ai da.

Mauhte wa gaw hka de di hkrat bang nna wo hka de yawng mat wa
ai da.

Dai hku yawng mat wa yang, le hka nam kaw Wa Hku Kan Sha ngu ai ni
she madim jung nna nga taw ma ai da.

Mauhte wa gaw dai Wa Hku Kan Sha ni a madim kaw wa chya taw ai da.

Dai hku wa chya taw ai majaw, Wa Hku Kan Sha ni gaw madim kaw na
Mauhte wa hpe wa shaw la ai da.



Dai shaloi Mauhte wa gaw hkum ting madi mat sai majaw

shanhte madim sin ai ni a ginsum kaw Mauhte wa hpe wan wut shakra ya ma ai da.

Dai hku wan wut shakra nga yang, jahkring mi nga yang, bu hpun palawng ni hkraw wa ai hte Mauhte wa gaw yup pyaw mat wa ai da.

Dai hku yup pyaw mat ai shaloi, Mauhte wa a bu hpun palawng kaw wan hkru kap mat wa ai da.

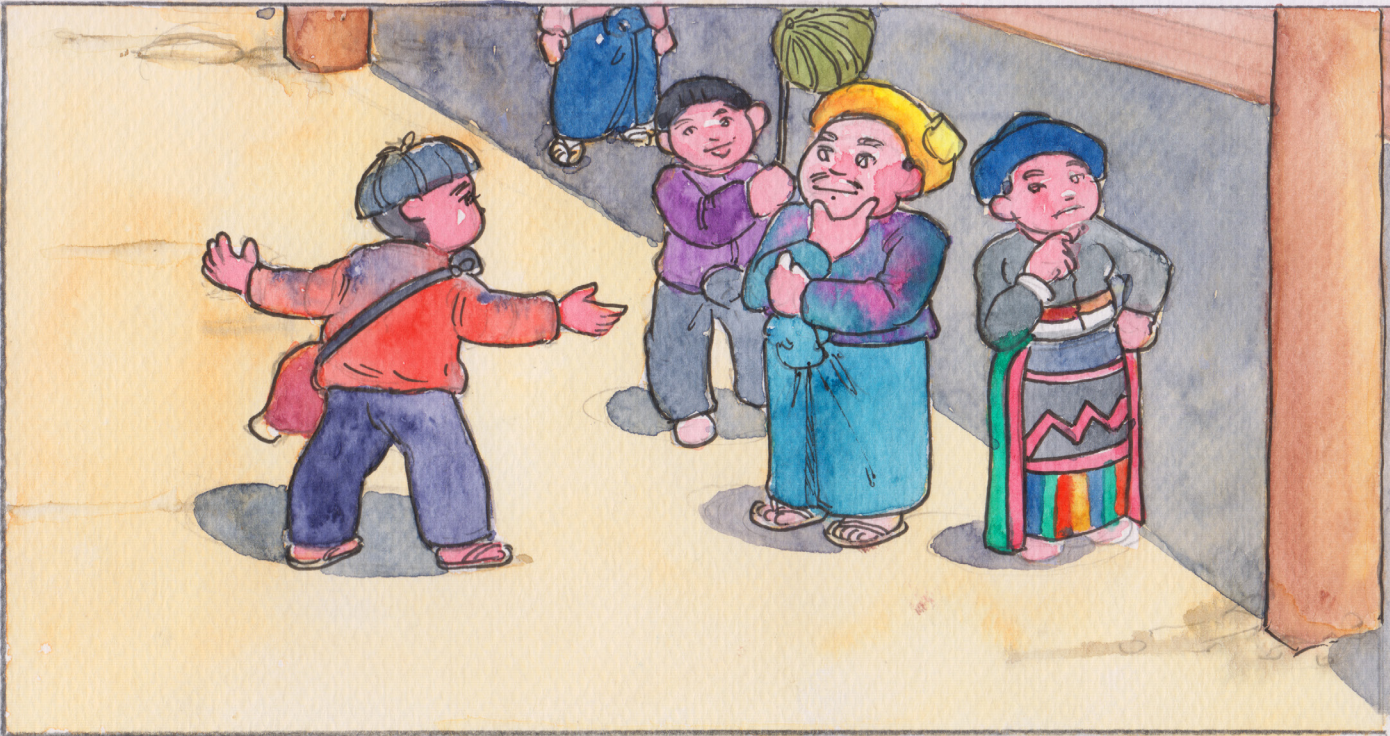


Dai zawn bu hpun palawng hkru kap wa ai kaw na tsam mari sat la
nna

dai Mauhte wa gaw hkrun lam bai matut hkawm mat wa ai da.

Dai hku hkawm mat wa ai shaloi, mare langai mi kaw du nna sut du
langai mi a nta kaw bai wa manam ai da.

Dai zawn wa manam ai shaloi, ndai wan hkru ai Gaw Mai Gaw Sha ngu
ai gaw ndai Mauhte wa kaw hkan nang sai da.



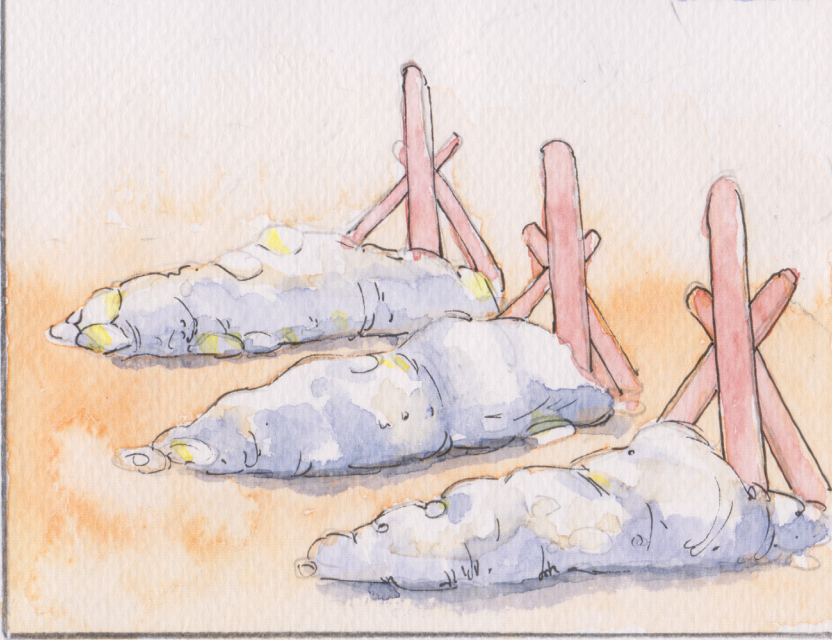
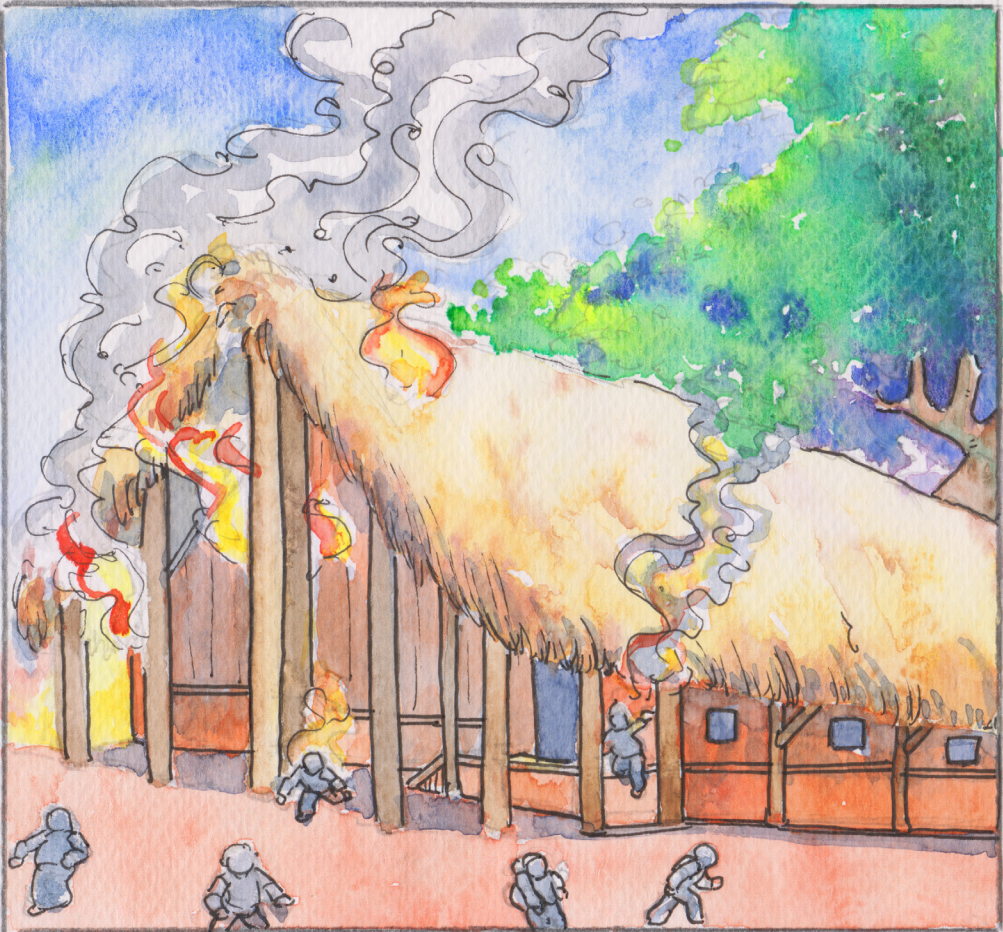
Dai majaw dai sut du wa a nta mung hkru mat wa ai da.

Dai kaw nna bai lai sa mat wa ai shaloi mung, dai Mauhte wa du ai shara shagu hta wan hkru mat wa ai da.

Dai myi sut du wa nta kaw wan hkru ai shaloi gaw, masha masum mung si lawm mat wa ai da.

Dai kaw nna Mauhte wa kaw kap ai majaw wan hkru ai lam byin mat ai hte

shinggyim masha ni wan hkru si ai mung hpang wa ai re da.



WUNPAWNG MAUMWI MAUSA

Kachin Folktales

