

MOI GAW RA I? YA GAW N RA I?



Written by Kachin Orature Project

Illustrations by Shawanang

Supervised by Keita Kurabe

Kachin Folktale 30

MOI GAW RA I? YA GAW N RA I?

Text © Kachin Orature Project 2023.

Illustrations © Shawanang 2023.

Supervised by Keita Kurabe

Layout by Sa Rit

Based on L. Nang Mai (speaker), Keita Kurabe (depositor), 2017. *Moi gaw ra i ya gaw n ra i*
(You used to love me and now you don't?) with English translation.

X-WAV/MPEG/XML. KK1-1095 at catalog.paradisec.org.au. <https://dx.doi.org/10.4225/72/598b32af7d57f>

First published 2023

Published by

Research Institute for Languages and Cultures of Asia and Africa (ILCAA)

Tokyo University of Foreign Studies

3-11-1, Asahi-cho, Fuchu-shi, 183-8534, Tokyo, JAPAN

ISBN 978-4-86337-438-6

This work was supported by

- TUFIS Commons
- JSPS KAKENHI Grant Number JP20K13024
- Description and Documentation of Language Dynamics in Asia and Africa (DDDLing), Research Institute for Languages and Cultures of Asia and Africa (ILCAA), Tokyo University of Foreign Studies



This work is licensed under a Creative Commons Attribution 4.0 International License.

<https://creativecommons.org/licenses/by/4.0/>



MOI GAW RA I? YA GAW N RA I?



Written by Kachin Orature Project

Illustrations by Shawanang

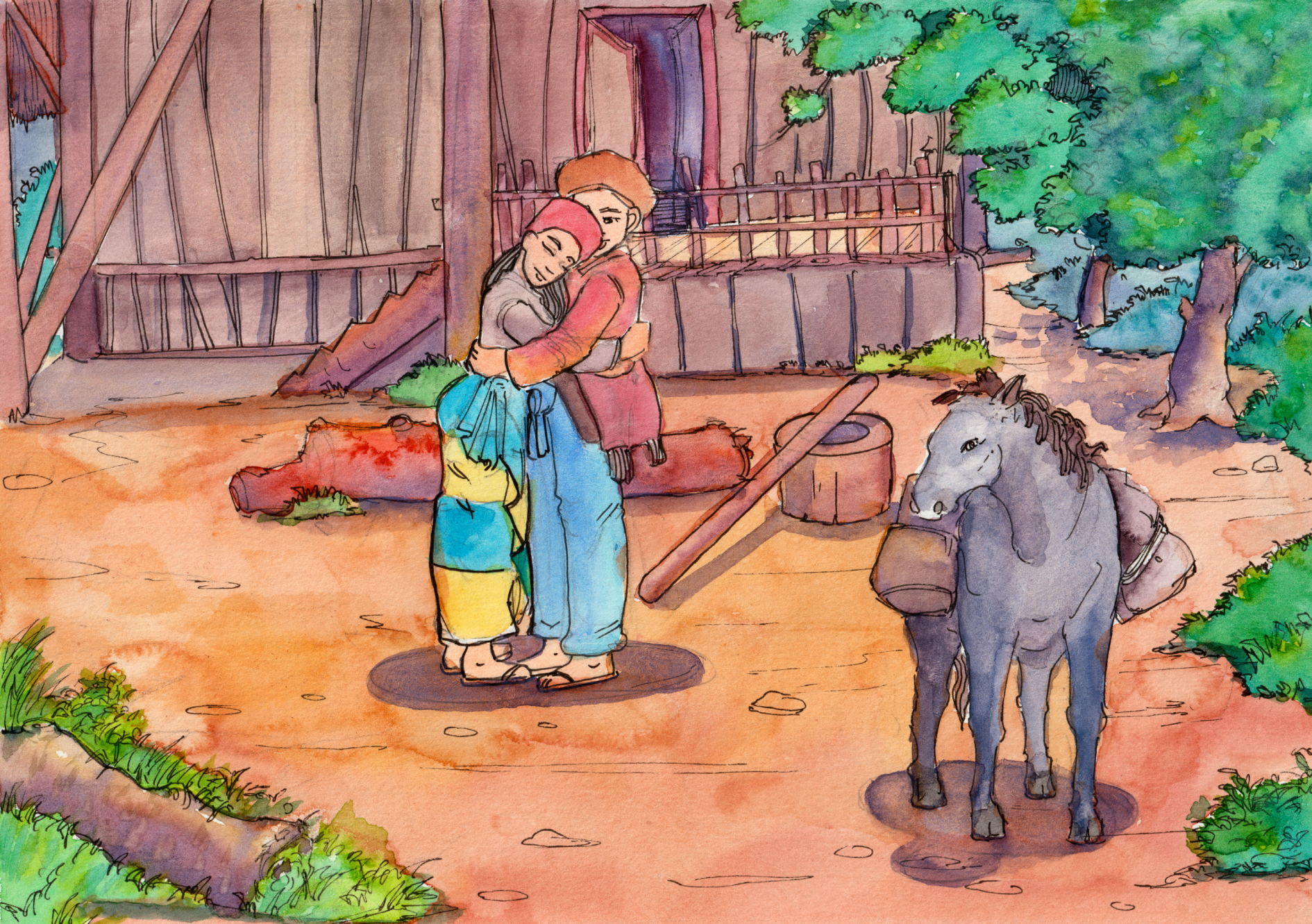
Supervised by Keita Kurabe

Ya hkai na maumwi gaw “Moi gaw ra i? Ya gaw n ra i?” nga ai maumwi re.

Moi shawng de, mare langai mi hta, grai tsaw ra hkat ai num sha hte
la sha shan lahkawng gaw hkungran nna rau sha nga ma ai da.

La sha wa gaw magwi kawng ni, nam na arung arai ni hpe dut mari
hpaga bungli hpe galaw ai wa re.

Hpaga ga hkawm yang mung masum ning mali ning na nna hkawm
hkawm re ai da.



Dai hku rai nna la wa gaw madu jan hpe tawn kau da nna hpaga ga hkawm mat ai hte masum ning ngu ai shaloi she nta mare de bai wa ai da.

Dai hku wa ai shaloi shi na mare n du shi yang shara langai kaw du ai shaloi shi mare masha ni hte hkrum ai da.

Dai shara gaw moi shi hkrun lam hkawm wa ai shaloi hta gaw yi ginwang she re ai da. Dai shaloi shi gaw dai kaw na ni hpe san ai da.

“E, hkri ni e, nanhte gaw hpa majaw ndai de sa nga mat ai ma?” ngu nna san ai da.



Shaloi dai mare masha ni gaw “E, mare de gaw grai hkrit ra ai gaw.
Na madu jan gaw grai hkrit ra ai gaw,” ngu nna hkap tsun dan ai da.

Dai shaloi shi gaw “Gara hku byin ai ma? Grai myit su ai re le,” ngu
nna tsun ai da.

Dai shaloi mare masha ni gaw “She wa yu u le,” ngu tsun dat ai hte
shi mung wa mat wa ai da.



Dai hku rai nna shi gaw mare de du wa ai shaloi, jan mung n du shi ai hte mare kaw mung mare masha ni yawng alum ahkum rai nna nga taw ai hpe mu ai da.

Dai majaw shi gaw “Myi na ni gaw ngai hpe masu ai she rai nga.”

“Mare kaw ndai zawn yawng alum ahkum she rai nga ai wa mi,” ngu nna myit la ai da.

Shi nta du ai shaloi shi madu jan mung shi hpe atsawm sha hkap tau la ai da.



Dai hku rai nna jan du wa ai shaloi gaw, myi shi mu da ai alum ala re ai mare gaw jan du magang katsi katsang nga wa magang re ai da.

Yu dat yang mung mare na nta ni mung yawng hten ma taw ai da.

Shi shang wa ai shaloi shi na nta mung jan du wa magang nyap nyap rai nna byin wa magang re ai da.

Dai majaw dai la wa gaw “Um, myi na mare masha ni, na madu jan gaw grai hkrit ra ai gaw nga tsun dat ai gaw lama mi gaw rai sam sai,” ngu nna myit dum la ai da.



Dai majaw shi gaw chyam yu ra sai ngu nna shi gup da ai gup chyawp hpe ga de dasang jahkrat kau dat ai da.

Dai shaloi shi madu jan gaw lata galu law rai nna gup chyawp dai hpe hta dat ya ai da.

Dai majaw shi gaw “Ndai num gaw ngai na madu jan n rai sai.”

“Nat num she rai sai,” ngu nna kalang ta chye la sai da.



Dai num wa mung jan du wa magang grai tsawm ai num kaw na grai hkrit na zawn re ai myi man nsam de galai wa ai da.

Dai majaw dai la wa gaw hprawng na matu myit sai hte dai nat num hpe

“Ngai shinggan naw pru na yaw,” ngu nna tsun ai da.

Rai tim dai nat num ngu na wa gaw dai la wa hprawng mat na tsang ai majaw

shi lang taw nga ai rai chywi ai samyit hte ri hpe gang mat wa shangun nna ri majaw hpe gaw shi jum da ai da.



Dai la wa mung madu jan shi hpe hprawng n hprawng chye na matu galaw ai hpe chye nna samyit hpe wo shinggan kaw na htum kaw jun da nna kalang ta kagat hprawng mat ai da.

Dai hku rai nna la wa kade na tim n pru wa hkraw yang nat num wa mung nta shinggan de pru wa yu ai shaloi gaw shi na samyit gaw htum kaw jun da ai hpe mu ai da.

Dai nat num gaw “Nang i, Moi gaw ra i? Ya gaw n ra i? Moi gaw ra i? Ya gaw n ra i?” ngu nna dai la wa a hpang de hkan kagat nang mat ai da.



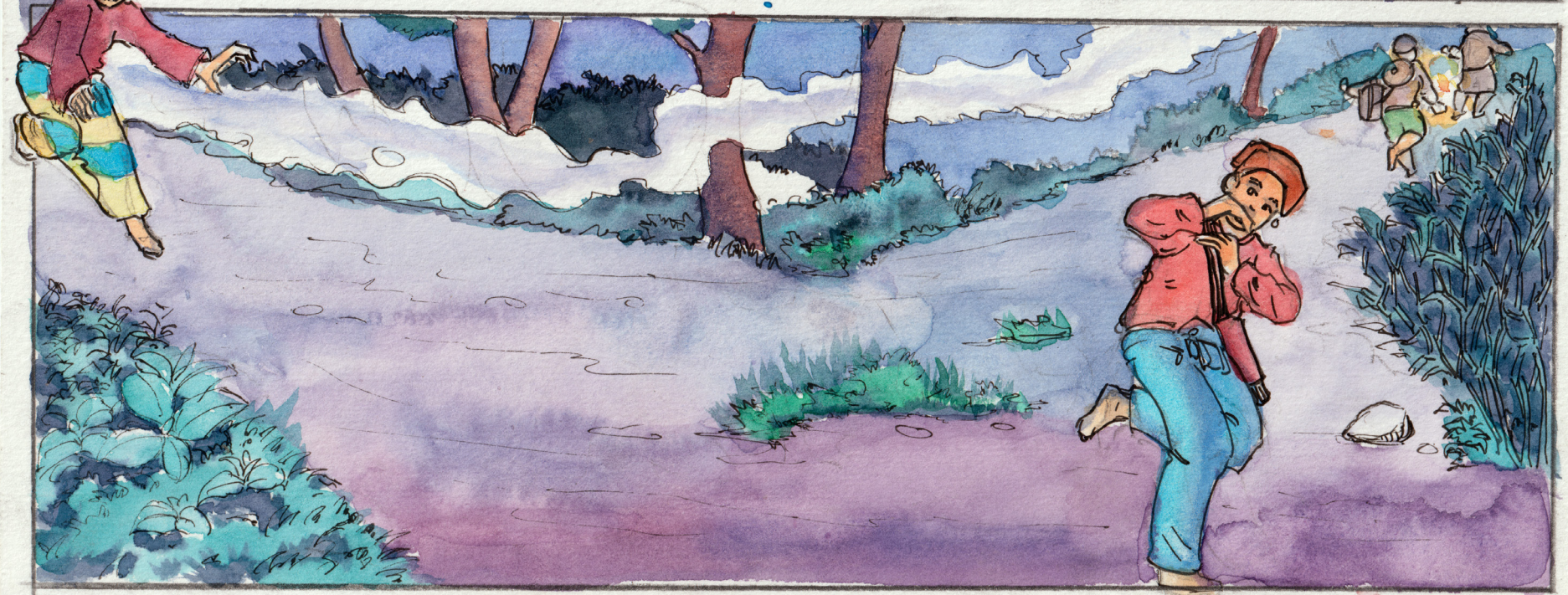
Dai hku kagat hprawng ai shaloi lam kaw la lahkawng hte hkrum ai da.

Dai la lahkawng gaw “E, manang wa, hpa majaw dai daram kagat hprawng nga ata?” ngu san ai shaloi, shi gaw “Ngai na madu jan gaw si mat nna nat byin mat sai she rai nga,” ngu nna tsun dan ai da.

Dai la yan gaw “Nang hpe kadai n tsun dan ai i teng,” ngu san yang, shi gaw “Nkau gaw tsun dan tim ngai n kam ai gaw,” ngu nna bai htan ai da.

Dai la yan mung “Anhte mung nang hpe n lu hkye ai,” ngu nna shan lahkawng mung hprawng mat wa ai da.

Dai hku rai nna la dai wa mung matut kagat, kade kagat hprawng tim dai nat num ngu na wa gaw



“Moi gaw ra i? Ya gaw n ra i?”

“Moi gaw ra i? Ya gaw n ra i?”

“Moi gaw ra i? Ya gaw n ra i?”

ngu nna hkan shachyut nang, hkan shachyut nang di nna

hpang jahtum dai la hpe dep nna dai la wa hpe rim sha kau ai da.



WUNPAWNG MAUMWI MAUSA

Kachin Folktales

