

# NHKUM TU YAU *hte* WA NDU

Written by Kachin Orature Project

Illustrations by Shawanang

Supervised by Keita Kurabe



Kachin Folktale 55  
**NHKUM TU YAU HTE WA NDU**

Text © Kachin Orature Project 2023.  
Illustrations © Shawanang 2023.  
Supervised by Keita Kurabe  
Layout by Sa Rit

Based on W. Awng (speaker), Keita Kurabe (depositor), 2016. Nhkum Tu Yau hte wa ndu (The hunter Nhkum Tu Yau and the wild boar). X-WAV/MPEG/XML. KK1-0163 at catalog.paradisec.org.au.  
<https://dx.doi.org/10.4225/72/598891375de69>

First published 2023

Published by  
Research Institute for Languages and Cultures of Asia and Africa (ILCAA)  
Tokyo University of Foreign Studies  
3-11-1, Asahi-cho, Fuchu-shi, 183-8534, Tokyo, JAPAN

ISBN 978-4-86337-463-8

This work was supported by  
- TUFs Field Science Commons  
- JSPS KAKENHI Grant Number JP20K13024  
- Description and Documentation of Language Dynamics in Asia and Africa (DDDLing), Research Institute for Languages and Cultures of Asia and Africa (ILCAA), Tokyo University of Foreign Studies



This work is licensed under a Creative Commons Attribution 4.0 International License.  
<https://creativecommons.org/licenses/by/4.0/>



# NHKUM TU YAU HTE WA NDU



Written by Kachin Orature Project  
Illustrations by Shawanang  
Supervised by Keita Kurabe

Ya tsun na maumwi gaw “Nhkum Tu Yau hte Wa Ndu” ngu ai maumwi re.

Moi shawng de Nhkum Tu Yau ngu ai sinat hte shan gyam sha ai muk hkyu kaba wa nga ai da.

Lami mi hta shi gaw wa ndu langai lu gap ai da.

Dai hku lu gap ai shaloi, shi gaw Ningwa Pung Hkoi ngu ai grai mying gumhkawng ai ningwawt kaba hpe chyam yu mayu ai da.

Ningwawt wawt ai ngu ai gaw ya prat hta gaw kahtan kawa kapaw ai, bai nna shaba lap hpe ashin nna makyit nna wawt ai.

Moi Ningwa Pung Hkoi a prat hta gaw machyu lungdin hte wawt ai. Shi dai hte ningwawt wawt ai shaloi gaw yawng jaw ai chyu re da.



Nhkum Tu Yau gaw wa ndu gap ai shaloi,

Ningwa Pung Hkoi na ga teng n teng hpe chyam yu mayu ai majaw

si taw sai wa ndu kaw na na maga mi gadoi di la nna she,

wa ndu hpe gaw nam kaw namlap hte magap tawn kau da ai da.



Shi gaw ndai shi kadoi wa ai na hpe gaw Ningwa Pung Hkoi hpe n mad-un ai sha san ai da.

“Gai, Ning Wawt Kaba Ningwa Pung Hkoi e, dai ni ngai wa ndu langai mi gap ai wa anhte lu sha na re kun, n lu sha na kun, wawt yu u,” ngu tsun ai da.

Dai shaloi Ningwa Pung Hkoi mung dai shi na machyu lungdin hte ningwawt wawt dat yu ai shaloi gaw gara hku na wawt lu ai i nga yang gaw “E, dai ni wawt ai gaw... ”

“Tsanang gam wa ndu prawn a, Nhkum Tu Yau yawn a,”

“nga ai mahtai lu ai,” ngu tsun ai da.





Lachyum gaw “Wa ndu gaw si ai kaw na bai hkrung nna hprawng mat wa sai.”

“Nhkum Tu Yau gaw myit n pyaw ai hte yawn na re ai,” ngu ai lachyum re da.

Dai hku tsun ai shaloi gaw Nhkum Tu Yau gaw

“E, nang na ningwawt gaw hpoi sai. Wa ndu gaw si sai gaw. Nang yu u,” ngu nna

wa ndu na na madun dan ai da.



Dai shaloi Ningwa Pung Hkoi wa gaw grai kaya mat sai hte shi na machyu lungdin hpe abyen kabai kau ai da.

Dai shaloi dai machyu lungdin gaw ga mat ai hte, dai kaw na hkyep ni gaw kahtan kawa kaw hkra, shaba lap kaw wa hkra re ai da.

Dai majaw, dai ni na aten hta gaw dai machyu lungdin wa hkra ai kahtan kawa hte shaba lap ni hpe lang ai re da.

Dai hku byin ai hpang, Nhkum Tu Yau gaw manang ni hpe shaga la nna she,

“Ngai mani gap sat da ai Wa ndu wa hpya sha saga,” ngu nna nam de woi sa ai da.



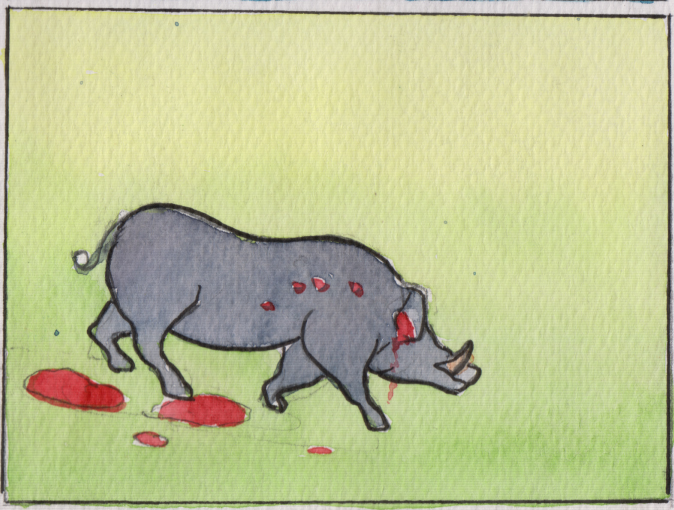
Dai hku woi sa ai shaloi gaw shi gap sat nna namlap rau magap tawn da ai wa ndu gaw dai kaw n nga taw sai sha wa ndu gaw hprawg mat wa sai da.

Hpa majaw dai hku byin ai i nga yang...

Shi dai wa ndu hpe magap hkrup ai namlap gaw tsi hkrung tsi nan lap rai taw ai majaw, wa ndu gaw si ai kaw na bai hkrung wa nna hprawng mat wa ai re da.

Dai kaw na gaw ningwawt wawt ai machyu lungdin mung n nga mat sai hte

dai machyu lungdin hkyep ni wa hkra ai kahtan kawa hte shaba lap ni hte sha ningwawt wawt ai re da.



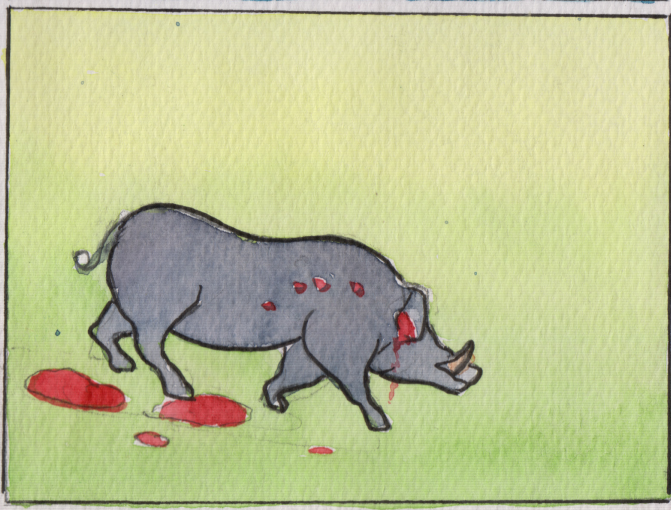
Wa ndu dai zawn hprawng mat wa ai shaloi gaw, Nhkum Tu Yau gaw

“Um... ngai dai ram gap hkra da sai dusat she re gaw.”

“Shara mi kaw gaw ndai wa ndu nga nga na re,” ngu nna

hkan tam hkawm mat ai da.





Dai hku tam hkawm mat ai shaloi gaw wo jan sha ni nga ai nat ga de du hkra tam hkawm du mat wa ai da.

Dai hku jan sha ni hte hkrum ai shaloi gaw Nhkum Tu Yau gaw “Nang de wa ndu mai byit langai n mu ai i?” ngu san ai da.

Mai byit ngu ai gaw sinat hte gap hkra da sai dusat langai ngai, gap gaw gap hkra da rai tim n lu rim la shi ai dusat, naw shachyut la ra ai dusat hpe tsun ai re.

Dai hku ngu san yang jan sha ni gaw “Aw... anhte na wa gap jahpye ai gaw nang she rai nga i!” ngu nna she



Nhkum Tu Yau hpe rim la kau ai da.

Nhkum Tu Yau gap hkrup dat ai wa ndu gaw nat wa rai taw ai da.

Shi hpe dai hku rim la nna jan salang ni hpang de woi wa nna daw dan je yang na matu ap dat ai da.

Dai shaloi jan salang ni gaw atsawm sha bai myit yu nna she,

“E... ndai Nhkum Tu Yau hpe gaw sat gaw hkum sat kau! Shinggyim masha she re gaw.”

“Mungkan ga de nga nna mayat maya na nga u ga! Shayi sha langai chyawm jaw dat u!” ngu nna she Nhkum Tu Yau hpe n sat ai sha n-ga,



Shayi sha langai mi bai jaw dat ai da.

Dai hku shayi sha langai hte rau Wa kasha langai mi hpe mung jaw ai da.

“Nanhte rem u yaw!”

“Hpang e anhte nanhte hpang de sa gawan ai shaloi, sat sha na re,” ngu nna she

Wa kasha langai mi mung shalawm na jaw dat ai da.



Dai hku jaw let sha, jan sha ni gaw hpa baw matut tsun ai i nga yang

“E... nanhte Nhkum amyu ni gaw tsi hkrung tsi nan jum yu sai amyu re.”

“Dai majaw, htawm hpang e nanhte masawp ai ni, magra ai ni, gayaw ai gashin ai zawn re ai machyi makaw re ni, mai tsai wa na re,” ngu nna shaman ga mung tsun dat ya ai da.

Dai majaw dai ni anhte Jinghpaw ni kaw “Nhkum amyu ni manat yang gaw mai ai,” ngu ai makam nga ai.

Hpa majaw i nga yang shanhte gaw tsi hkrung tsi nan jum yu sai amyu re ngu nna kam ai majaw re da.

Dai majaw Nhkum Tu Yau gaw jan ga kaw na jaw dat ai shayi sha langai mi ma, wa kasha ma hte rau wo mungkan ga de bai yu wa rai nna wa nga nga ai da.





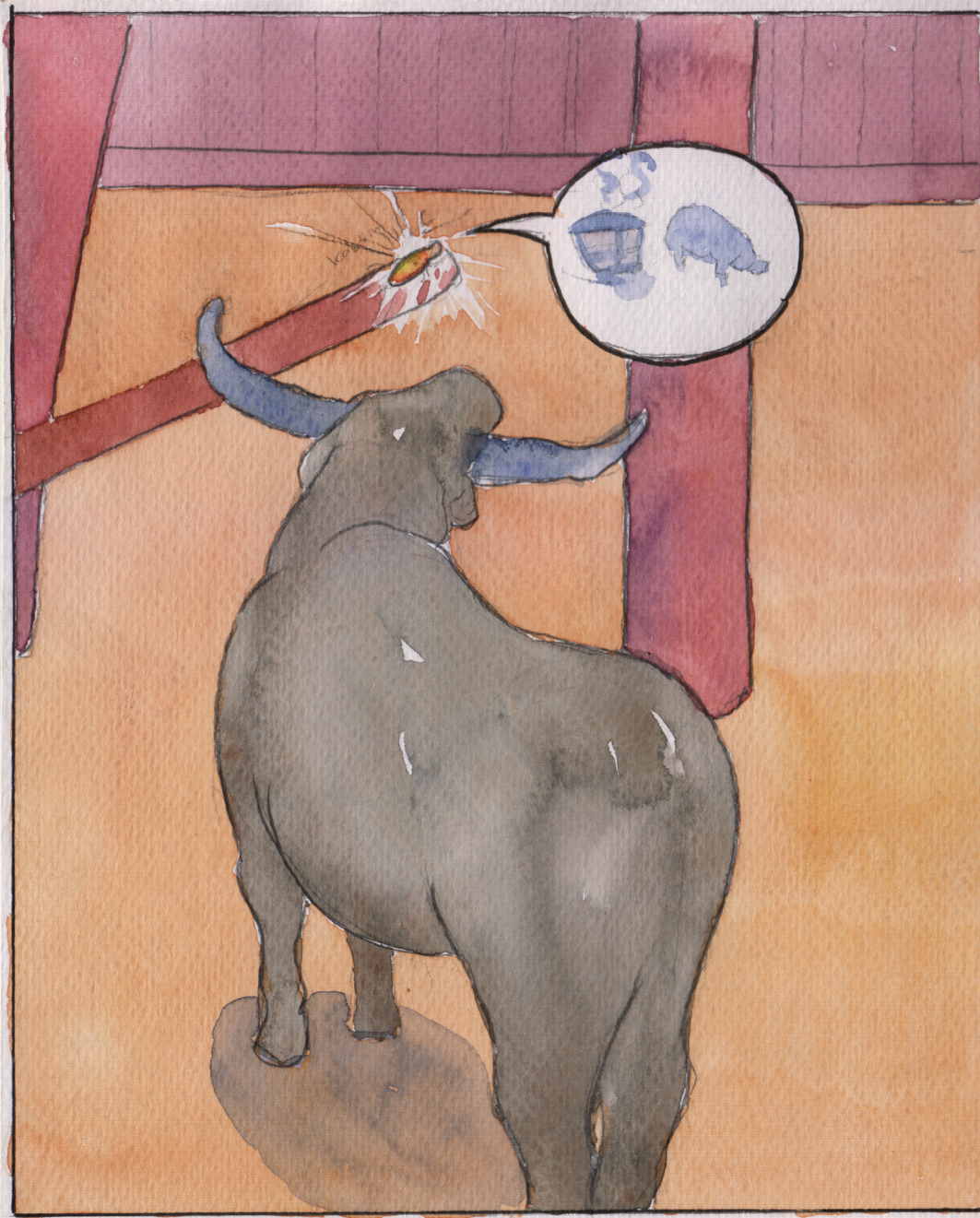
Nhkum Tu Yau gaw jan ga kaw nna jan sha ni jaw dat ai jan shayi sha langai hte wa kasha hpe la rai nna mungkan ga de wa nga nga ai da.

Lani mi hta gaw dai Nhkum Tu Yau a nta makau kaw shalip langai mi hte nga langai mi hkrum shaga taw nga ma ai da.

Dai yan hkrum shaga ai ntsa kaw, hto numgaw kaw gaw, hkru du langai mi mung nga taw ai da.

Nga dai gaw grai hpum tsawm ai da.

Dai majaw shalip gaw nga dai hpe san ai da.



“Nang gaw dai ram ram hpum tsawm ai gaw hpa baw sha na hpum tsawm nta?” ngu san ai da.

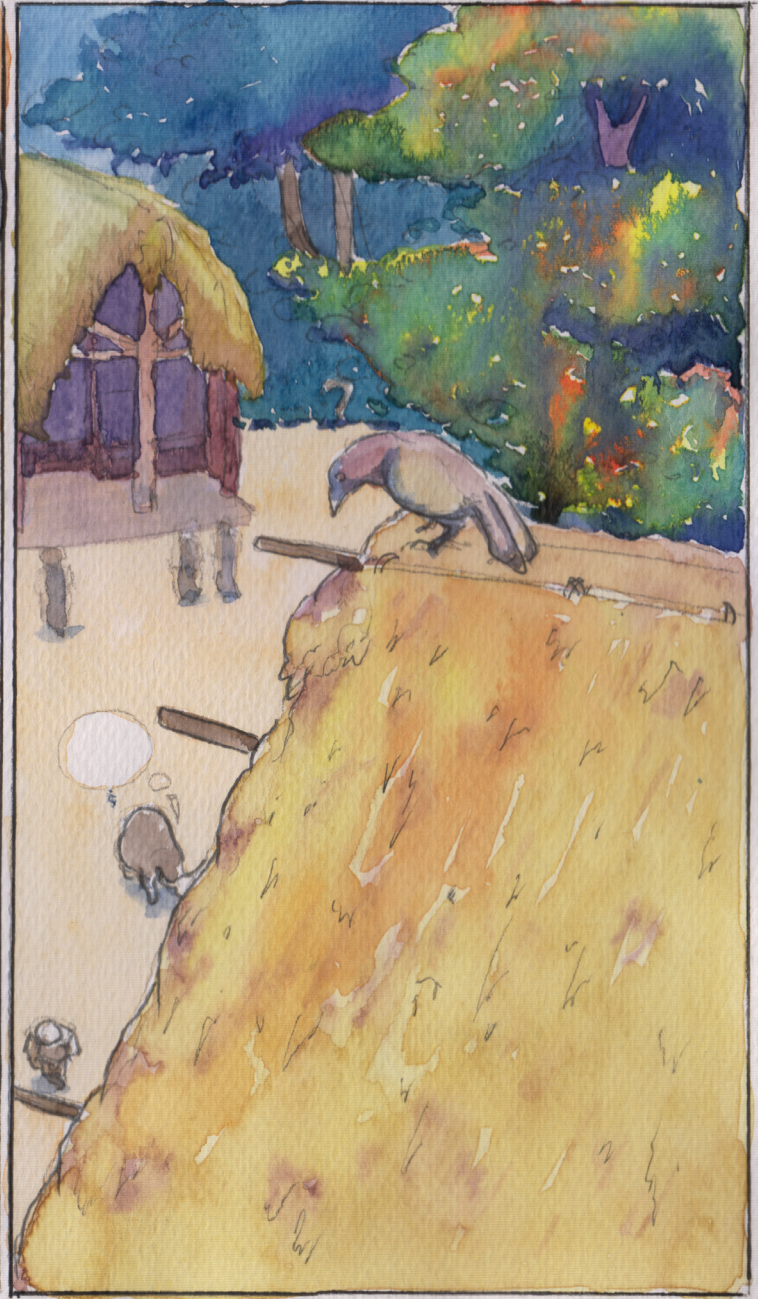
Dai shaloi dai nga gaw “Kaseng Kala ngu ai nam kaw tu ai, dusat ni sha ai baw sha na hpum tsawm ai re,” ngu nna bai htai ai da.

Dai hku htai ngut yang nga gaw shalip hpe bai san ai da.

“Shalip e, nang gaw dai ram ram pri ten tu tsawm ai gaw hpa majaw rai?” ngu nna san ai da.

“Ngai gaw wa la sau tawng sha ai majaw ndai zawn pri ten tu tsawm ai re,” ngu nna htai ai da.

Dai zawn shan lahkawng shaga hkat ai hpe hto numgaw kaw dung nga ai u hkru du gaw na la nna, kalang ta jan ga de sa mat wa nna jan sha ni hpe wa tsun dan ai da.



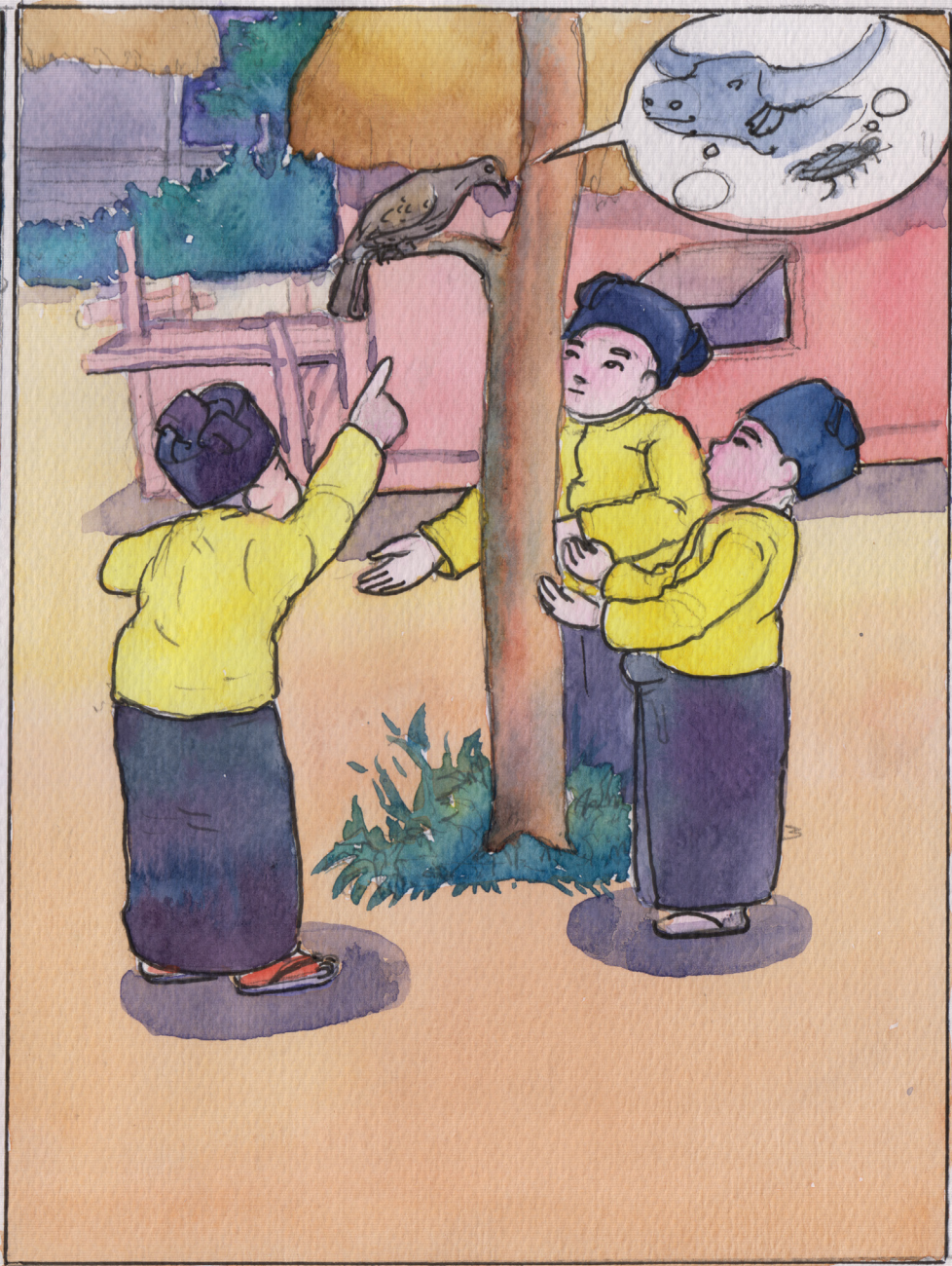
“E... nanhte Nhkum Tu Yau hpe jaw dat ai wa gaw shanhte sat sha kau masai,” ngu nna sa shawk ai da.

Dai na ai shaloi gaw jan sha ni gaw

“Ga... anhte du yang she sat sha ga, ngu nna htet da ai wa.”

“Ya shanhte sha sat sha kau sai nga yang gaw n mai sai,” ngu nna

Nhkum Tu Yau hte shanhte a kasha hpe bai wa shaga la nna san ai da.



Dai shaloi shanhte a kasha jan shayi sha gaw

“E... Nu ni Wa ni e, an lahkawng wa dai n sat sha shi ga ai.”

“Naw nga ai. Naw rem da ga ai,” ngu nna bai htai ai da.

Dai shaloi jan sha ni gaw

“Dai hku nga yang gaw, anhte hpe kadai masu ai ta?” ngu nna sagawn bang mat wa ai da.





Shawng nnan hku na u gum hpe shawng san ai da.

Dai u gum hpe gara hku san ai i nga yang, “Ning ja jum nam nga u gum e, nang n re i?” ngu san ai da.

Shaloi u gum gaw “Nanhte hpe tsun ai ngai n re,” ngu nna bai htai ai da.

Dai hpang u hkru hpe bai san ai da. “Ning ja bu nam nga u hkru, nang n re ai i?” ngu san ai da.

Shaloi gaw dai u hkru gaw “Ngai rai nngai. Nanhte hpe tsun ai gaw ngai rai nngai.”

“Ngai gaw shalip hte nga shaga hkat ai kaw shalip gaw wa la sau tawng sha nna pri ten tu tsawm ai re, ngu tsun ai majaw, nanhte jaw dat ai wa shanhte sat sha kau sai rai na re ngu nna tak la nna tsun dan ai re,” ngu nna htai ai da.



Dai hku nga na ai shaloi jan sha ni gaw shanhte jaw dat ai wa naw rem da ai teng ai re majaw yawng hpe mara dat ya ai da.

Nhkum Tu Yau hte shanhte a kasha hpe mung mungkan ga de bai dat dat ai da.

Rai tim, ga bai htet dat ai da. “Nan mungkan ga de bai yu wa nna dai wa hpe atsawm rem da u.”

“Anhte du sa wa ai shaloi, nan nat hkungri galaw u. Dai kaw shadaw mali jung nna, pinra galaw rai nna, dai kaw lakang mung htan u. Dai hku di nna anhte hpe jaw jau mu,” ngu nna htet dat ai da.

Dai majaw, nat jaw ai ten, lamu nat jan nat ni hpe jaw jau ai rai yang, shadaw mali jung rai nna jaw jau ai lam galaw ai gaw dai kaw na h pang wa ai re da.







# WUNPAWNG MAUMWI MAUSA

Kachin Folktales

