



BAREN SHABRANG

Written by Kachin Orature Project

Illustrations by Shawanang

Supervised by Keita Kurabe

Kachin Folktale 57

BAREN SHABRANG

Text © Kachin Orature Project 2023.

Illustrations © Shawanang 2023.

Supervised by Keita Kurabe

Layout by Sa Rit

Based on Wawn Awng (speaker), Keita Kurabe (depositor), 2016. Baren Shabrang (The Dragon Groom).
MPEG/X-WAV/XML. KK1-0148 at catalog.paradisec.org.au. <https://dx.doi.org/10.4225/72/5988910b9ba41>

First published 2023

Published by

Research Institute for Languages and Cultures of Asia and Africa (ILCAA)

Tokyo University of Foreign Studies

3-11-1, Asahi-cho, Fuchu-shi, 183-8534, Tokyo, JAPAN

ISBN 978-4-86337-465-2

This work was supported by

- TUFS Field Science Commons

- JSPS KAKENHI Grant Number JP20K13024

- Description and Documentation of Language Dynamics in Asia and Africa (DDDLing), Research Institute for Languages and Cultures of Asia and Africa (ILCAA), Tokyo University of Foreign Studies

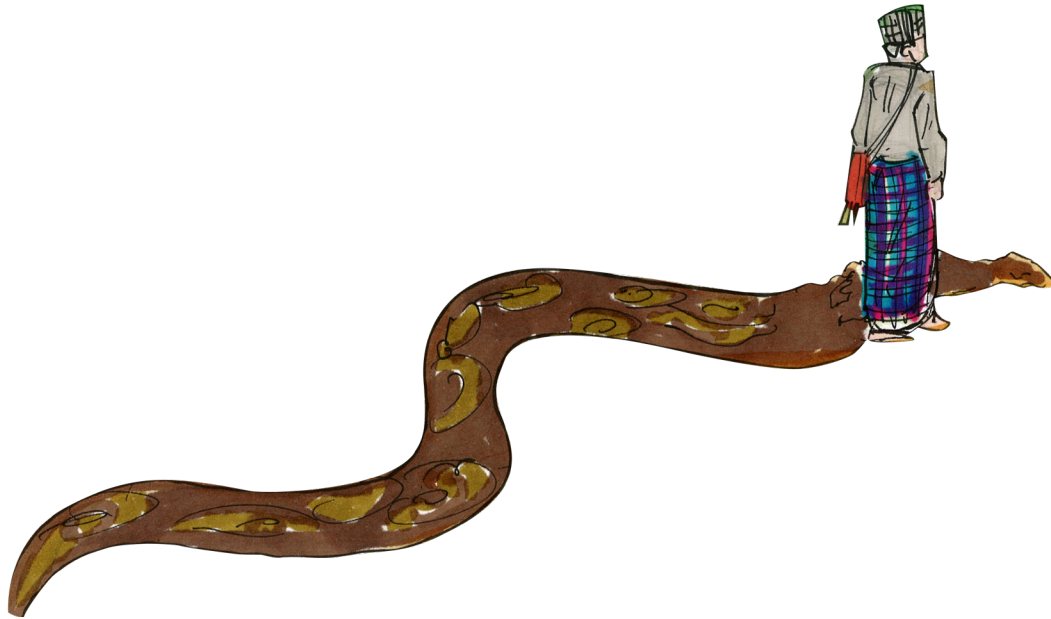


This work is licensed under a Creative Commons Attribution 4.0 International License.

<https://creativecommons.org/licenses/by/4.0/>



BAREN SHABRANG



Written by Kachin Orature Project
Illustrations by Shawanang
Supervised by Keita Kurabe

Ya hkai na maumwi gaw “Baren Shabrang” ngu ai re.

Moi shawng de, mare langai mi kaw

kanu yan kasha num kasha nga ma ai da.



Lani mi hta, shan nu gaw nam de lahpaw htat sa ma ai da.

Dai lahpaw htat sa nna wa ai shaloi,

lam kaw lapu kaba langai mi hte hkrum ma ai da.



Shan nu gaw dai lapu kaba langai mi hte hkrum rai nna she,
yen kau da nna nta de wa mat wa ai da.



Dai hku shan nu hte hkrum ai shaloi

lapu kaba dai wa gaw dai num kasha mahkawn hpe grai yu ra
mat wa ai da.

Lapu she rai tim yu ra mat ai da.



Dai majaw dai lapu kaba gaw shana de rai yang dai shan nu a nta de sa wa ai da.

Dai hku sa wa nna dai num sha nta shawng kaw du yang

shi gaw shi a tsawp hpe chyinghka lam makau kaw raw kau dat yang

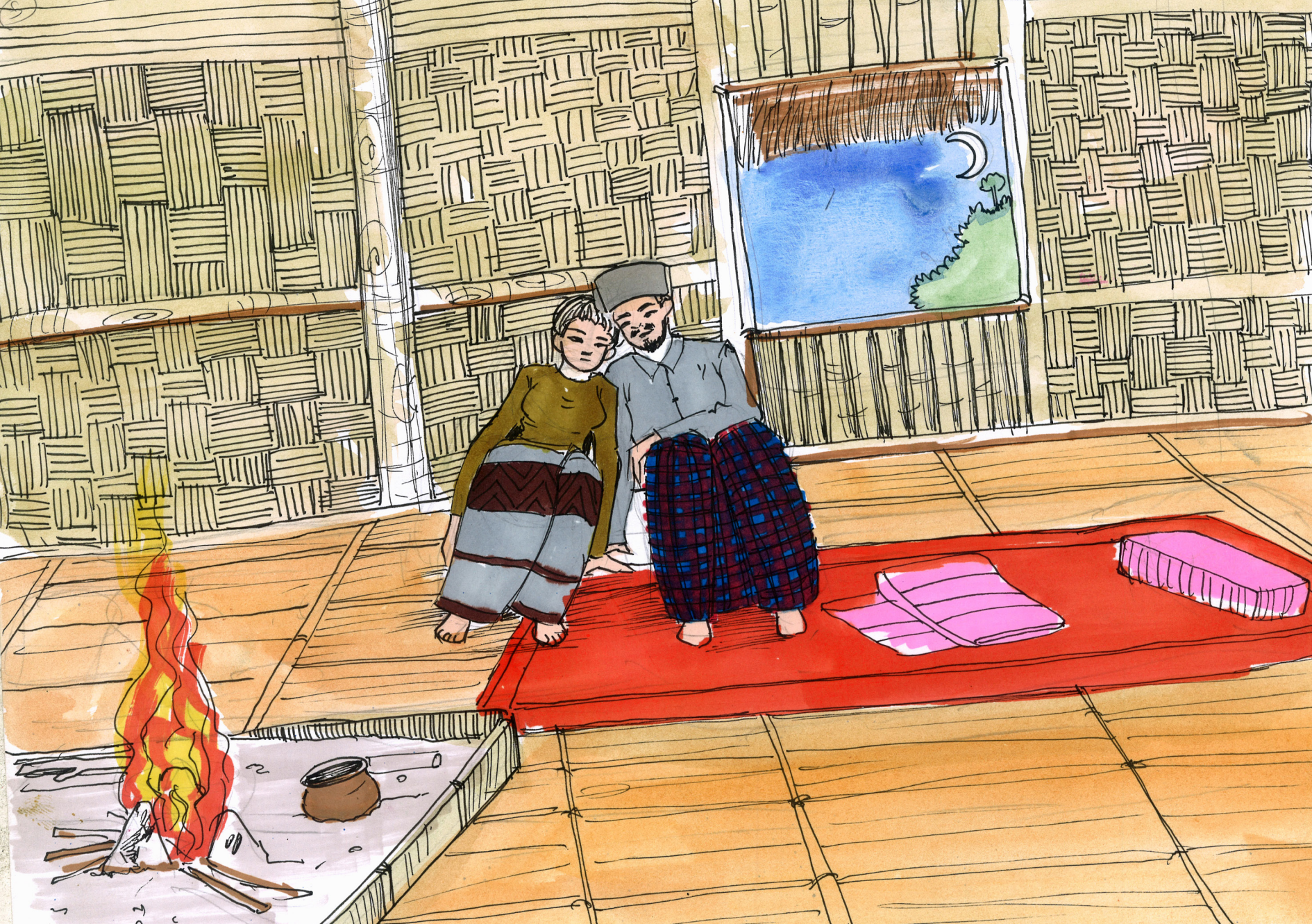
masha tai mat nna she nta de shang wa ai da.



Dai zawn shi gaw dai shani kaw nna gaw shana shagu shinggyim
masha shabrang tai nna

dai num kasha hte sa kanawn mazum zum re ai da.

Dai zawn shi gaw shana shagu sa kanawn nna wa mat wa ai shaloi gaw
lapu sep langai mi jahkrat da ya ya re ai da.



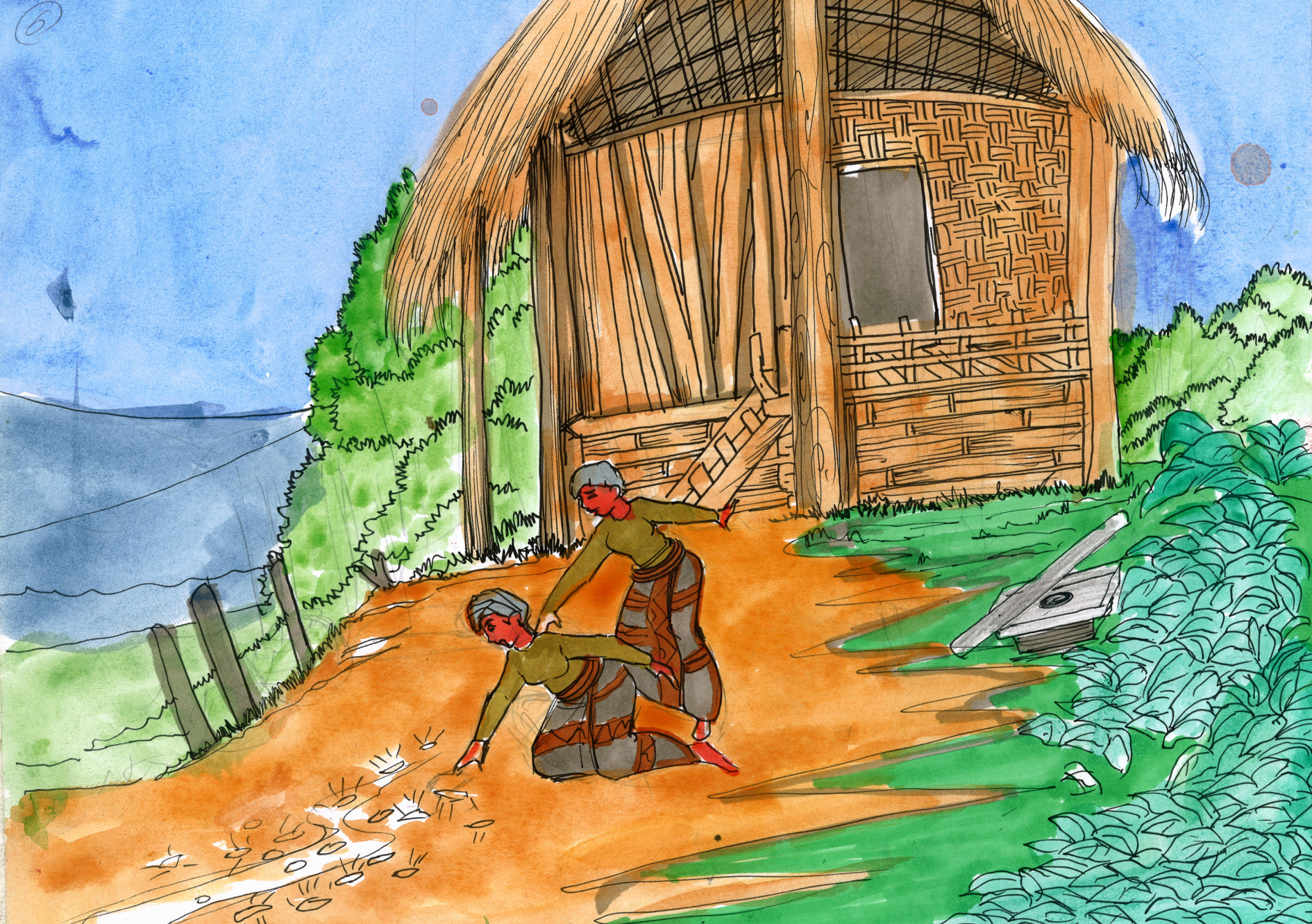
Dai zawn re nna jahkrat da ya ai lapu sep gaw hpang jahpawt de rai yang ja hkyep rai taw mat ai da.

Dai zawn shana shagu sa nna lapu sep jahkrat da re dai gaw ja hkyep ni rai mat mat re majaw shan nu gaw ja ni grai lu wa ai da.

Lani mi na aten hta gaw kasha gaw kanu hpe tsun ai da.

“Nu e, ndai lapu gaw shana rai yang gaw shinggyim masha tai nna ngai hkap la la re ai wa.”

“Jahpawt rai yang gaw lapu tai nna wa mat mat re ai law,” ngu tsun dan ai da.



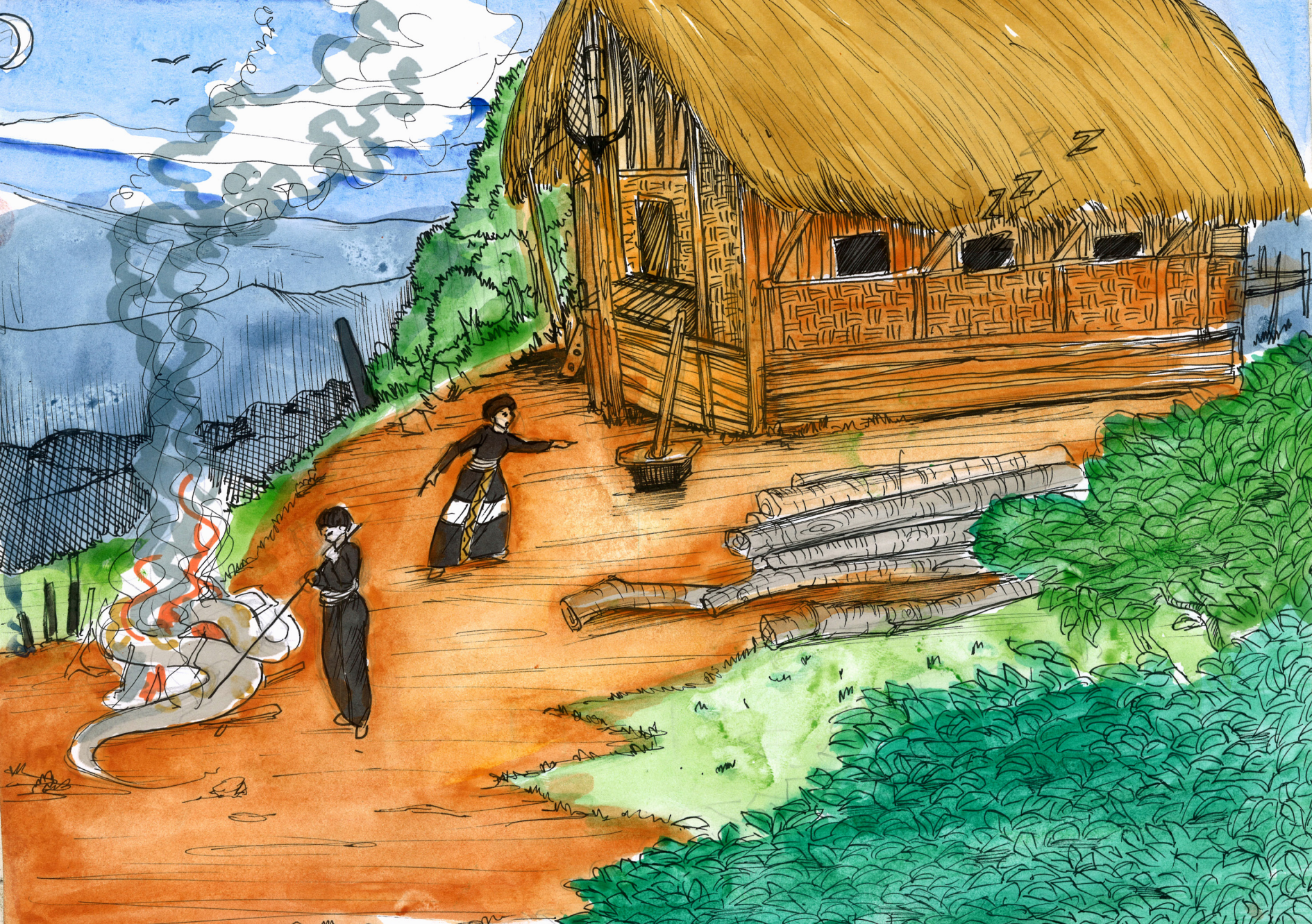
Dai shaloi kanu gaw kasha hpe tsun ai da.

“Ma e, nang ya shana yup tung e shi yup ai shaloi shi na tsawp hpe nat kau ya u,” ngu tsun ai da.

Dai hku tsun ai hte maren,

kasha num kasha mung shabrang wa wa yup nga ai shaloi

lagu pru nna dai shabrang wa a lapu tsawp ni yawng hpe nat kau ya ai da.



Hpang jahpawt gaw dai shabrang gaw lapu bai tai na matu bai shakut ai da.

Rai tim tsawp n nga mat sai majaw nat lapu rai tim shi gaw lapu n mai byin mat sai da.

Dai hku lapu n mai byin mat sai hte shinggyim masha byin nna

shan gaw shi jaw da da re ai ja gumhpraw hte grai lu su mat wa ai da.

Dai zawn grai lu su mat ai shaloi gaw dai num sha yan nu a htingbu jan mung manang lu su ai hpe yu nna grai manawn wa sai da.



Dai majaw shi gaw “E, ning e, moi gaw an lahkawng maren sha grai matsan ai wa.”

“Ya gaw gara hku nang grai lu su wa ai rai?” ngu tsun dan ai da.

Dai shaloi gaw num kasha a kanu gaw dai hku dai hku re ngu nna tsun dan ai da.

Nam de sa ai shaloi lapu langai mi mu nna shana rai yang gaw masha tai, ja ni jaw re nna lapu tsawp ni nat kau ai du hkra yawng n masu ai sha hkrak tsun dan ai da.

Hpa majaw i nga dai num gaw myit ding ai myit malang ai majaw yawng tsun dan ai da.

Dai hku tsun yang gaw dai manawn chye ai num jan mung sahte mayu wa sai da.



Sahte mayu wa sai majaw kasha hpe woi la nna nam de lahpaw sa htat ai da.

Kaja wa nga yang gaw shi gaw lahpaw sa htat ai gaw n re.

Lapu sa tam ai ga.

Dai hku lapu sa tam yang gaw nam kaw pu noi langai mi kawan taw ai hpe mu ai da.



Dai hku kawan taw ai hpe mu ai shaloi shan gaw

“Ara e, rai sa!” ngu nna

shingnoi kaw tsut di nna nta de gun mat wa ai da.



Dai hku gun mat wa nna nta du yang

gawk langai mi kaw kanu gaw dai shi kasha mahkawn hpe lapu hte shayup kau da ai da.

Hka, dai lapu gaw nat lapu n re sha, kaja wa shi gaw lapu majing re.

Pu noi nga yang gaw mayu chye ai baw lapu re majaw

shana gaw lapu dai gaw dai num kasha hpe mata sai da.



Mata nna she lagaw hku shawng mayu ai da.

Dai shaloi kasha num sha gaw

“Nu e! Ngai hpe lapu gaw mata nna mayu ai law!”

“Ya lagaw lahkre kaw du nga sai!” ngu ai da.

Dai shaloi kanu gaw

“Nang hpe tsaw ra nna mata ai re,” sha tsun ai da.



Lapu gaw bai matut nna mayu ai da.

Kasha gaw bai “Nu e! Ya lahput bai du sai law!” ngu tsun ai da.

Dai shaloi kanu gaw “Nang hpe tsaw ra nna shala ai re,” ngu tsun ai da.

Kasha bai “Nu e! Ya nshang du sai law!”



Kanu bai “Dai hku sha nang hpe tsaw ra nna re,” ngu tsun ai da.

Kasha gaw “Ya yang gaw sinda du taw nga sai law!” ngu ai da.

Rai tim kanu gaw lapu jahkrat da ya na ja hkyep chy chyu myit nna kasha hpe n yu ai da.

Kasha hpe n yu ai sha “E, e, sharang u, Ma e.”

“Nang hpe tsaw ra nna dai lapu nang hpe dai hku di ai re,” ngu tsun ai da.



Hpang e kasha gaw “Nu e! Du du sai law!” ngu tsun ai da.

Rai tim kanu gaw “Dai hku sha, nang hpe tsaw ra nna re,” ngu nna sha anga taw ai da.

“Du du sai law!” nga nna tsun ai hpang e gaw kasha gaw zim mat wa ai da.

Kasha zim mat wa yang gaw kanu gaw “Ya chyawm rai sai.”

“Nye kasha gaw ja hkyep lu na rai sai, hpawt de gaw,” ngu nna she grai kabu taw ai da.



Hpang jahpawt kanu gawk de bai shang wa yu nna tam yu yang gaw
kasha hpe mung n mu, ja hkyep hpe mung n mu ai sha,

kasha hpe mayu nna kan gaw tit tit re nna nga taw ai, malang taw ai
lapu hpe sha mu ai da.

Dai zawn re nna shi gaw ja gumhpraw mung n lu, shi kasha hpe mung
sum mat wa ai da.

Ndai maumwi a tsun mayu ai lam gaw htingbu lu su shagu tinang lu su
ai baw n re ai.

Shi hta shi myit yu mang yu ai lam mung n nga, lu mayu ai hte lawhpa
myit marin ai lam langai sha nga ai majaw kasha hpe mung sum mat
wa ai nga maumwi re.



WUNPAWNG MAUMWI MAUSA

Kachin Folktales

