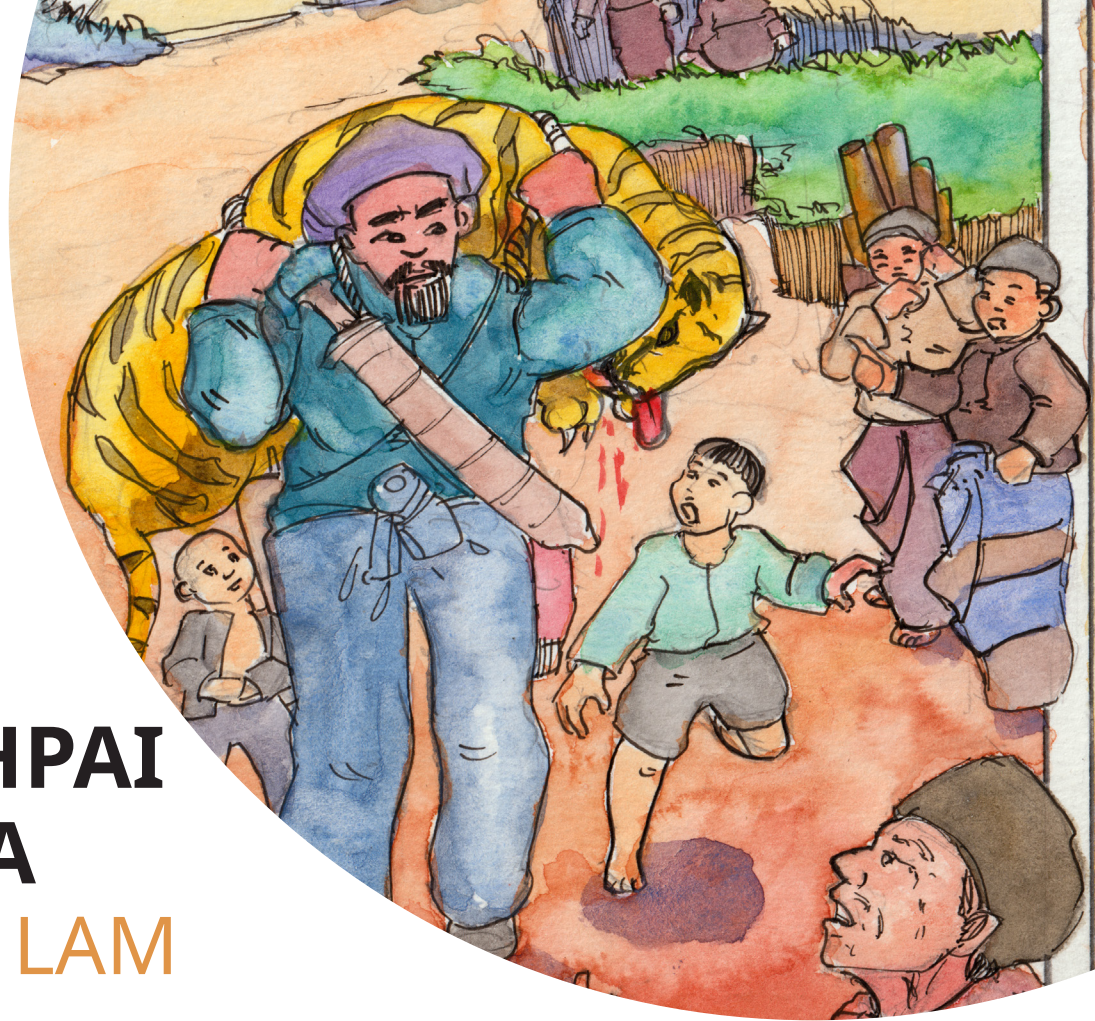


GUMGUN GUMHPAI NAT JAW NNA SHARAW HKAM AI LAM



Written by Kachin Orature Project
Illustrations by Shawanang
Supervised by Keita Kurabe

Kachin Folktale 72

GUMGUN GUMHPAI NAT JAW NNA SHARAW HKAM AI LAM

Text © Kachin Orature Project 2023.

Illustrations © Shawanang 2023.

Supervised by Keita Kurabe

Layout by Sa Rit

Based on M. Ja H pang (speaker), Keita Kurabe (depositor), 2017. Gumgun gumhpai nat jaw nna sharaw hkam ai lam (The man who trapped a tiger by making offerings to guardian spirits) with English translation. X-WAV/MPEG/XML. KK1-1761 at catalog.paradisec.org.au. <https://dx.doi.org/10.4225/72/598c86fe964e9>

First published 2023

Published by

Research Institute for Languages and Cultures of Asia and Africa (ILCAA)

Tokyo University of Foreign Studies

3-11-1, Asahi-cho, Fuchu-shi, 183-8534, Tokyo, JAPAN

ISBN 978-4-86337-480-5

This work was supported by

- TUFIS Commons
- JSPS KAKENHI Grant Number JP20K13024
- Description and Documentation of Language Dynamics in Asia and Africa (DDDLing), Research Institute for Languages and Cultures of Asia and Africa (ILCAA), Tokyo University of Foreign Studies



This work is licensed under a Creative Commons Attribution 4.0 International License.

<https://creativecommons.org/licenses/by/4.0/>



GUMGUN GUMHPAI NAT JAW NNA SHARAW HKAM AI LAM



Written by Kachin Orature Project

Illustrations by Shawanang

Supervised by Keita Kurabe

Ya hkai dan na maumwi gaw “Gumgun Gumhpai Nat Jaw Nna Sharaw Hkam Ai Lam” re.

Moi shawng de kahtawng langai mi hta htinggaw masum nga ai da.

Dai htinggaw masum kaw gaw htinggaw langai mi ngu na kaw sha, la kasha mung langai sha lu ai da.

Dai la kasha gaw kaji ten kaw nna u hkam, wa du hkam, sharaw hkam, dusat dumpyeng hkam ai grai myit lawm ai da.

Dai hku u, wa, dusat ni hpe hkam sha rai nna, dai la kasha wa gaw kaba wa sai da.



Shi na kahtawng gaw kaga mare kahtawng ni hte grai tsan ai majaw, sharaw grai sawng ai da.

Dai mare kaw nna dumsu, nga ni hpe sha n-ga, masha du hkra sharaw gaw rim sha wa ai da.

Dai la sha wa gaw shi kaji ai ten hta mung sharaw e masha rim sha ai hpe mung hkrum wa ai majaw shi ya kaba wa sai hte dai sharaw ni hpe grai hkam sat mayu wa ai da.

Shi gaw sharaw hpe hkam na matu hkyen sai da. Sharaw ni hpe kade hkam tim n lu hkam hkraw ai da.



Dai hku n lu hkam hkraw yang shi gaw moi na gumgun gumhpai nat ni hpe npan de tsa jaw nna matan hkam ai da.

“Ya sharaw hkam sa na re.”

“Dai majaw sharaw ni hpe lu hkam hkra garum la rit,” ngu nna tsa jaw nna matan ai da.



Rai tim, n lu hkraw ai da.

N lu ai majaw shi gaw u, wa, dumsu ni sat nna

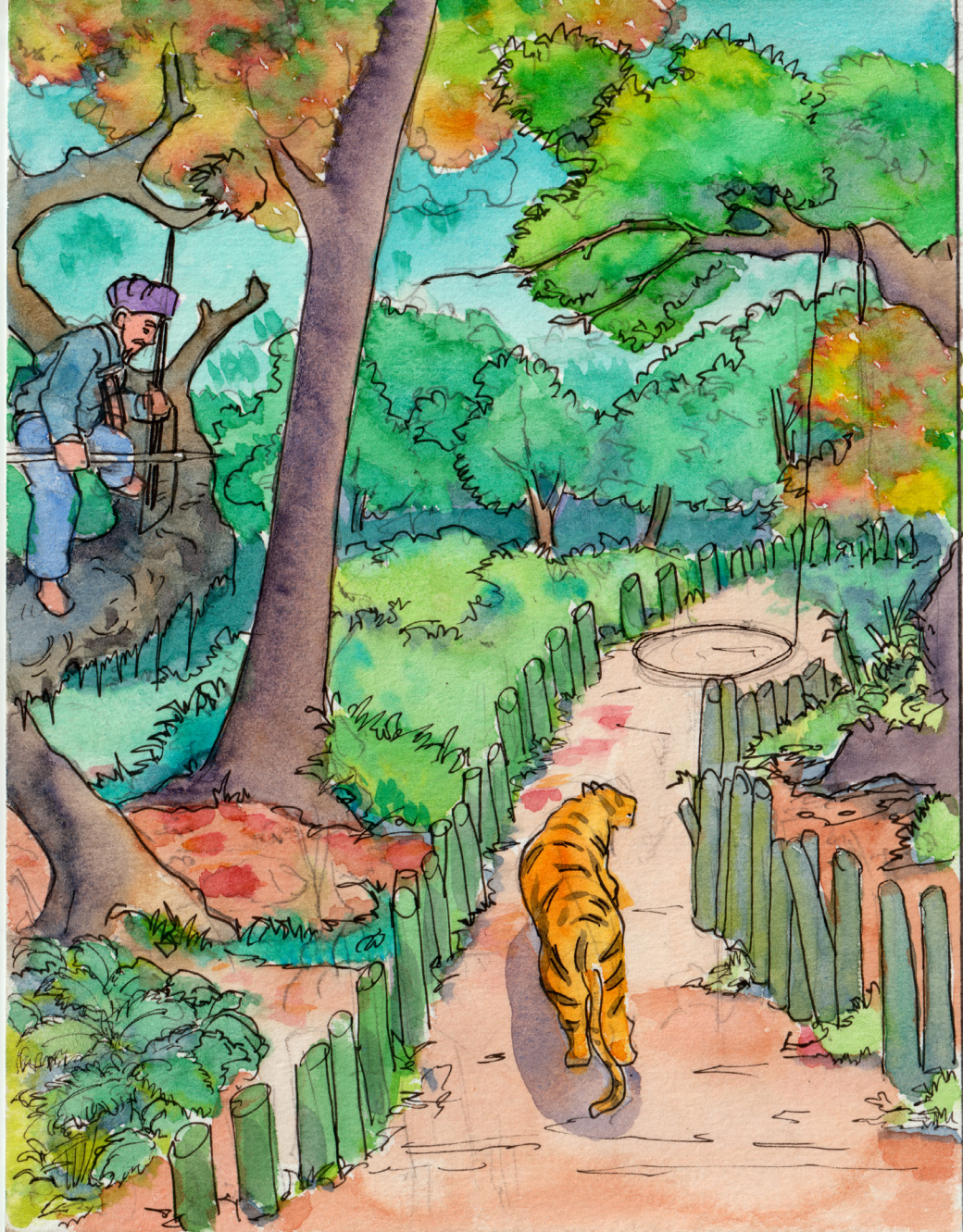
nat jaw nna kalang bai hkam sai da.



Moi bum ga de gaw kawa ni hpun ni hte kum kau nna, lai lam kaw hpri sumri kawngwang jahkrat da ai hku nna kalang bai hkam da ai da.

Dai hku bai hkam yang mung n lu ai da.

Shing rai yang gaw, shi gaw kalang bai dai gumgun gumhpai ni bai jaw sai da.



Dai hku nat jaw nna moi na masha ni mam htu sha ai npan ngu ai shara kaw dai sharaw hpe hkam ai da.

Dai hku hkam ai shaloi kaga la langai mi gaw lagyim nna “Sharaw galoi sa na kun?” ngu nna la taw ai da.

Dai hku la sin taw ai shaloi dai lagyim yu taw ai la wa hpe sharaw gaw rim sha kau ai da.



Dai hku rim sha kau yang dai la kasha wa gaw grau na sharaw sawng wa ai chye nna shi gaw sharaw ni hpe grai nan rim sat kau mayu wa sai da.

Shing rai nna shi gaw myit n gut ai hte kalang bai gumgun gumhpai nat ni hpe bai jaw jau ai sha n-ga,

myi sharaw dun sha mat nna si mat ai la a numla hpe mung kalang bai matan nna shaga la ai da.



Shaga la nna “E, hkau e, ndai sharaw ni gaw nang hpe mung dun la sha kau sai.”

“Dai sha n-ga, mare mung ding sa ai majaw, ndai sharaw ni hpe lu rim na matu ngai hpe hpan rit,” ngu nna

tsa jaw matan hpyi dat ai hte gaw sharaw ni hpe dai la sha wa lu hkam mat ai da.



Dai shani kaw na gaw nga manga sharaw ni ma hkra hpe lu hkam sat kau ai da.

Dai la kasha wa gaw mare kahtawng shagu hta mying gumhkawng mat wa ai da.

Sharaw hkam na rai yang dai la sha hpe sha shaga ma ai da.

Shing rai dai la kasha gaw sharaw lu sat kau ya ai majaw masha law law a shagrau sha-a ai hpe hkrum la lu ai da.

Moi na masha ni gaw shanhte hta ra ai lam ni, n dang galaw ai lam ni nga yang ya na zawn gumgun gumhpai nat ni hpe garum hpyi ai re da.



WUNPAWNG MAUMWI MAUSA

Kachin Folktales

