



Written by Kachin Orature Project

Illustrations by Shawanang

Supervised by Keita Kurabe

Kachin Folktale 79

LAHPYAW HPYAW AI LAM

Text © Kachin Orature Project 2023.

Illustrations © Shawanang 2023.

Supervised by Keita Kurabe

Layout by Sa Rit

Based on L. La Bawng (speaker), Keita Kurabe (depositor), 2017. Lahpyaw a lam (The whistle) with English translation. MPEG/X-WAV/XML. KK1-0382 at catalog.paradisec.org.au. <https://dx.doi.org/10.4225/72/598894aa19eef>

First published 2023

Published by

Research Institute for Languages and Cultures of Asia and Africa (ILCAA)

Tokyo University of Foreign Studies

3-11-1, Asahi-cho, Fuchu-shi, 183-8534, Tokyo, JAPAN

ISBN 978-4-86337-487-4

This work was supported by

- TUFs Field Science Commons

- JSPS KAKENHI Grant Number JP20K13024

- Description and Documentation of Language Dynamics in Asia and Africa (DDDLing), Research Institute for Languages and Cultures of Asia and Africa (ILCAA), Tokyo University of Foreign Studies

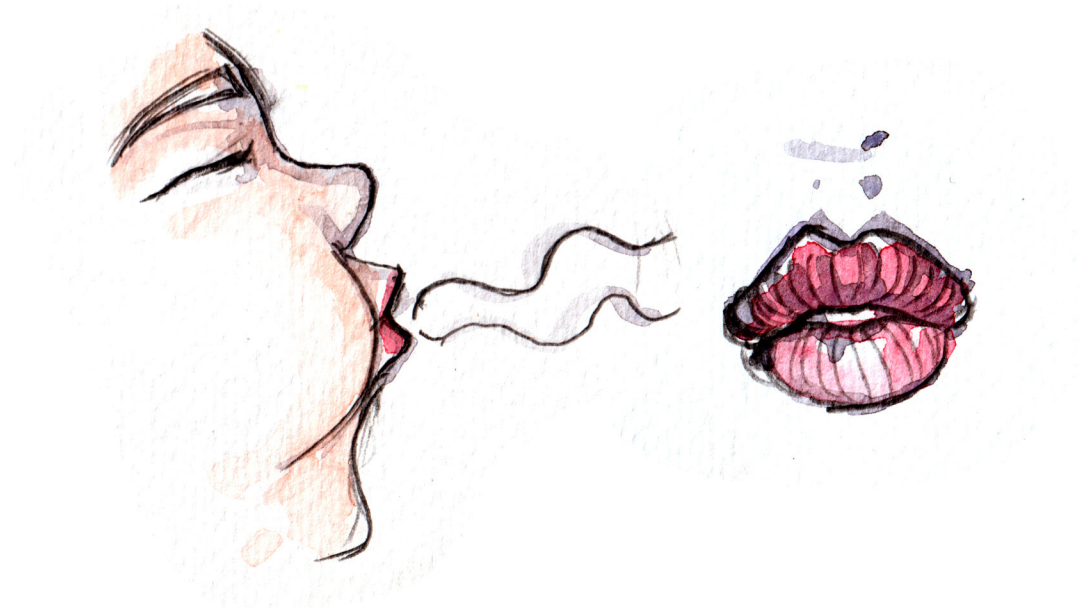


This work is licensed under a Creative Commons Attribution 4.0 International License.

<https://creativecommons.org/licenses/by/4.0/>



LAHPYAW HPYAW AI LAM



Written by Kachin Orature Project

Illustrations by Shawanang

Supervised by Keita Kurabe

Ya hkai dan na maumwi gaw anhte Wunpawng myu sha ni a lah-pyaw hpyaw ai lam re.

Moi shawng de, kashu kasha ni gaw kanu kawa ni si mat yang grai marit maroi rai ma ai da.

Shaloi kanu kawa ni n si shi yang tsun ai da.

“E, Nu yan Wa e, nan yan si wa ai shaloi anhte kasha ni gara hku rai nna nga na rai?”



“Nu yan Wa hpe marit tim n mu lu sana re ai i?” ngu tsun ai da.

Shaloi kanu yan kawa gaw hpa bai numhtet ai i nga yang

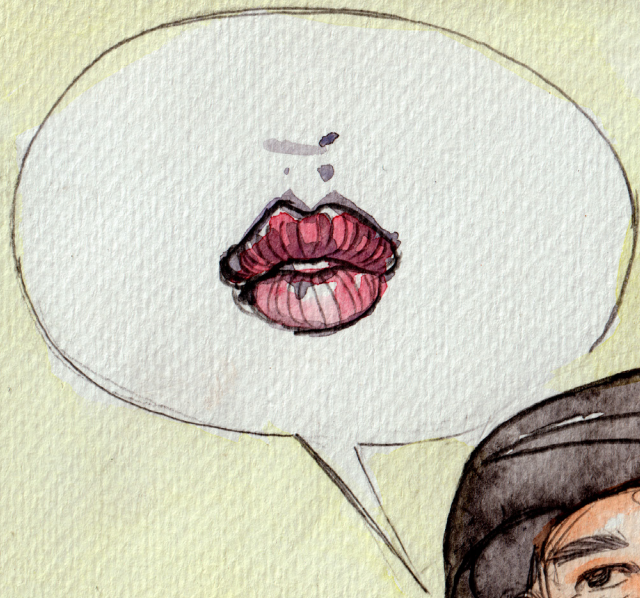
“E, nye Sha ni e, Nu yan Wa si mat wa yang gaw n mu n hkrum mai na sai re.”



“Rai tim, Nu yan Wa hpe myit dum ai shaloi”

“Nanhte a n-gup chyum, nten pum rai na lahpyaw hpyaw u.”

“Dai shaloi Nu yan Wa gaw nbung katsi bung rai na sa wa na ga ai,”
ngu numhtet ai da.



Dai nhtoi kaw na kashu kasha ni gaw kanu yan kawa ni
si mat ai hpang

kanu yan kawa hpe myit dum shagu lahpyaw hpyaw ma ai da.

Lahpyaw hpyaw yang nbung katsi bung pyaw wa ai da.



Dai re majaw anhte shinggyim masha ni gara kaw rai tim lahpyaw
hpyaw yang nbung katsi bung ai re.

Dai nbung katsi gaw si mat sai kanu kawa ni kashu kasha ni hpan
de nbung tai nna sa ai ngu nna

moi na masha ni ndai hku lahpyaw hpyaw ai lam hpe hkai dan ai re.



WUNPAWNG MAUMWI MAUSA

Kachin Folktales

