



JAHTAWNG HTU

AI ALM

Written by Kachin Orature Project

Illustrations by Shawanang

Supervised by Keita Kurabe

Kachin Folktale 110
JAHTAWNG HTU AI LAM

Text © Kachin Orature Project 2024.

Illustrations © Shawanang 2024.

Supervised by Keita Kurabe

Layout by Sa Rit

Based on N. Ja Mai (speaker), Keita Kurabe (depositor), 2017. Jahtawng htu ai lam (The naming ceremony). X-WAV/MPEG/XML. KK1-0351 at catalog.paradisec.org.au. <https://dx.doi.org/10.4225/72/598894246fd3e>

First published 2024

Published by

Research Institute for Languages and Cultures of Asia and Africa (ILCAA)

Tokyo University of Foreign Studies

3-11-1, Asahi-cho, Fuchu-shi, 183-8534, Tokyo, JAPAN

ISBN 978-4-86337-522-2

This work was supported by

- TUFS Field Science Commons

- JSPS KAKENHI Grant Number JP20K13024

- Description and Documentation of Language Dynamics in Asia and Africa (DDDLing), Research Institute for Languages and Cultures of Asia and Africa (ILCAA), Tokyo University of Foreign Studies

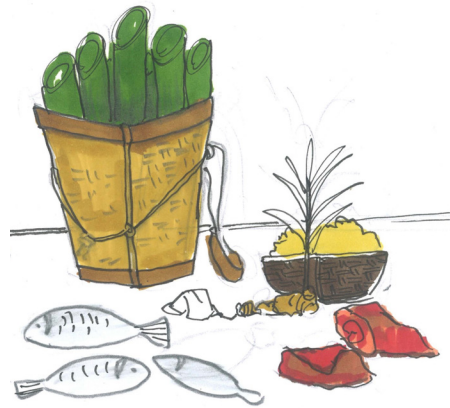


This work is licensed under a Creative Commons Attribution 4.0 International License.

<https://creativecommons.org/licenses/by/4.0/>



JAHTAWNG HTU AI LAM



Written by Kachin Orature Project
Illustrations by Shawanang
Supervised by Keita Kurabe

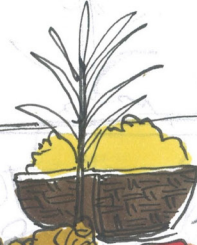
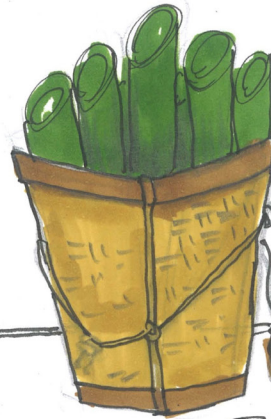
Anhte Wunpawng amysha ni gaw ma shangai sai hte jahtawng htu ai re.

Jahtawng htu ai lam gaw moi ji woi ji wa ni a prat kaw nna lang hkrat wa ai,

Anhte Wunpawng sha ni a htunghkying rai nga ai.

Jahtawng htu ai shaloi Ashan htu ai. U di mung htu ai.

Shanam mung htu ai. Nga jahkraw mung htu ai re.



Jahtawng htu ai ngu ai gaw

moi ji jaw nat jaw prat ten hta

anhte Wunpawng sha ni kashu kasha shangai shaprat ai shaloi



Nat ni gaw shangai shaprat dat ai ma ni hpe

shanhte nat ni shawng amying shamyng kau na hpe

shinggyim masha ni n ra ai da.



Dai majaw shinggyim masha ni gaw

ma shangai ai hte jahtawng htu ai lam hpe galaw ai re.

Ndai gaw moi prat kaw na lang hkrat wa ai

kanu kawa kaji kawoi ni a htunghkying langai re.



Wunpawng amyu sha ni gaw ma shangai ai shaloi

jahtawng htu ai ngu ai htunghkying hpe

prat hte prat ban hte ban galaw sa wa ai re.

Jahtawng htu ai lam gaw

Wunpawng sha ni a n lang n mai n galaw n mai re ai maka kumla
mung rai nga ai.



Ya ndai jahtawng htu ai ngu ai hta hpa baw ni hpe lang ra ata nga yang

Ashan hpe lang ra ai.

Ashan hpe gaw

ndai mungkan ga na dusat dumpyeng ni yawng a malai ngu nna
lang ai re.



Bai nna,

U di hpe mung lang ai.

U di hpe gaw

ntsa malen pyen ai U ni yawng a malai ngu nna lang ai re.



Rai nna,

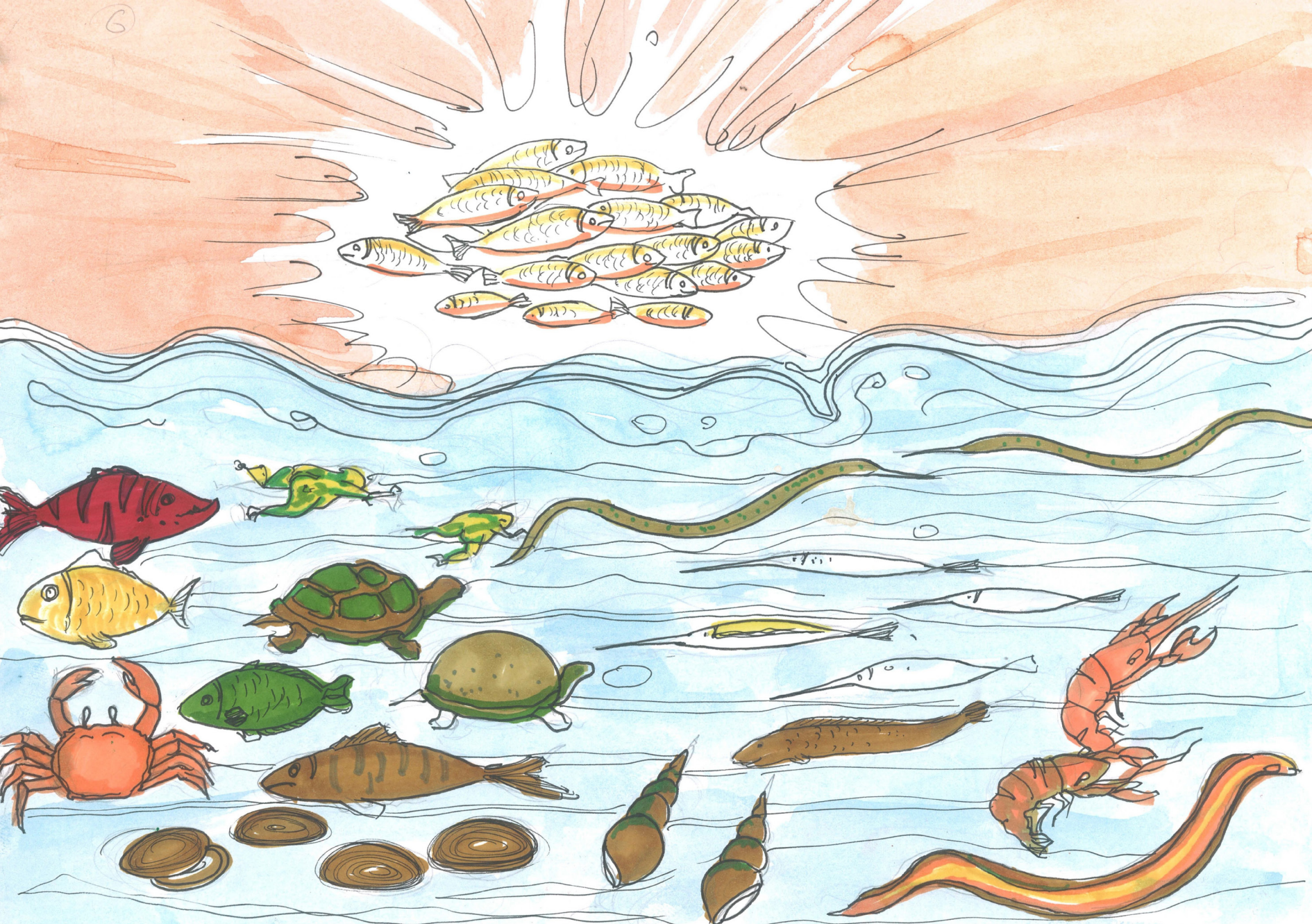
Nga jahkraw hpe mung lang ai.

Nga jahkraw zawn re ai Nga ni hpe lang ai lam gaw

hka hpungtang kata na Nga ni,

hka kata kaw rawng ai baw hpan amyu ni yawng a malai ngu nna

Nga jahkraw bang ai.



Bai nna she, Shanam hpe mung lang ai.

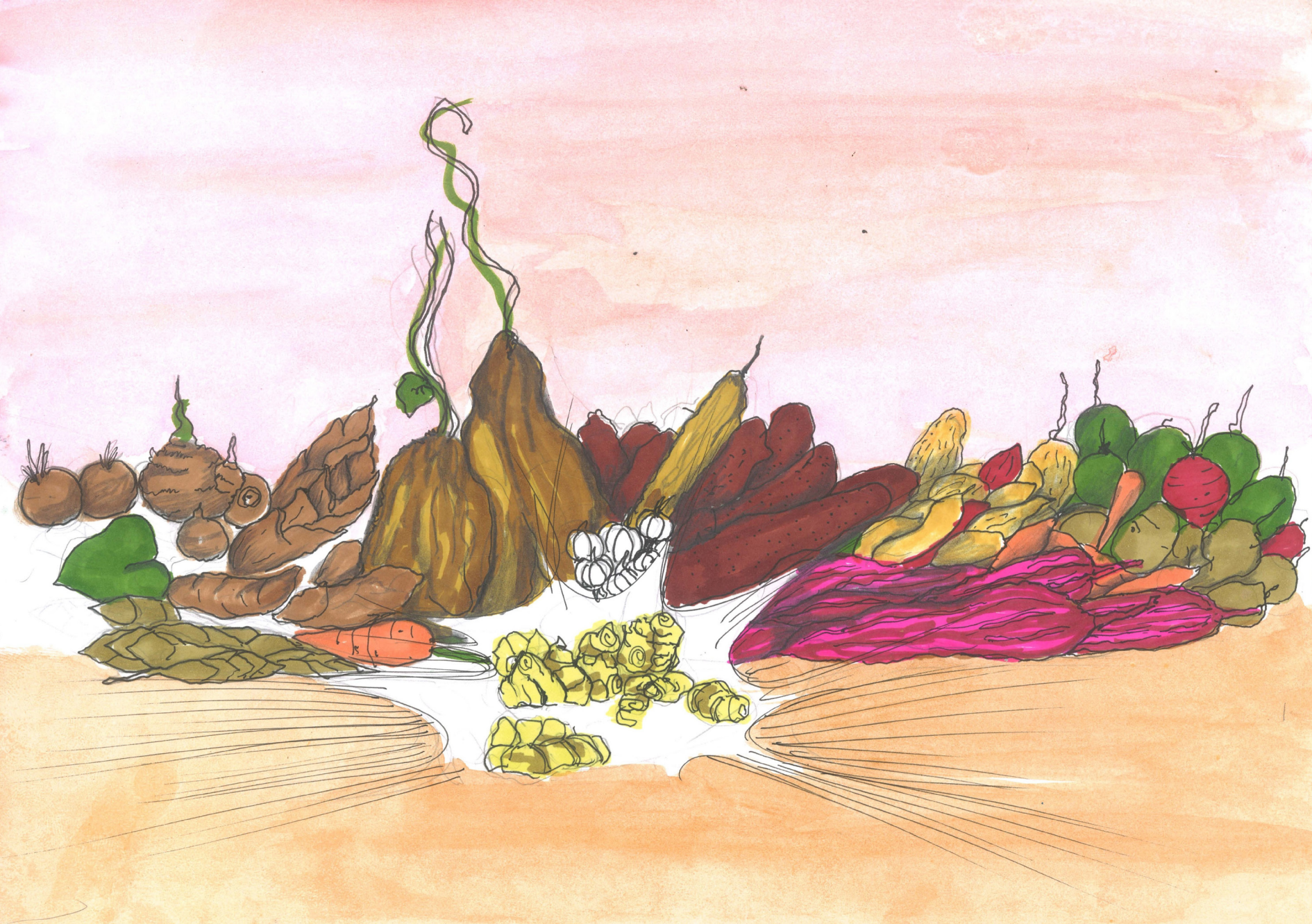
Ndai Shanam hpe gaw

aga kata kaw e rawng ai up ai baw amyu,

nai, shakau, shaban, shagrang zawn re ai,

ga kaw up ai baw hpan amyu yawng a matu malai ngu nna

ndai jahtawng htu ai kaw n lawm n mai re.



Dai majaw, Ashan, U di, Nga, Shanam, ndai ni hpe jahtawng htu ai re.

Jahtawng htu ai lam gaw anhte kashu kasha shangai shaprat ai shaloi

Wunpawng sha ni moi ji jaw nat jaw prat kaw na lang hkrat wa ai,

Wunpawng sha ni a n lang n mai re ai htunghkying langai re.



WUNPAWNG MAUMWI MAUSA

Kachin Folktales

