

# SHATA JAN SAKSE TAI AI LAM



Written by Kachin Orature Project

Illustrations by Shawanang

Supervised by Keita Kurabe

Kachin Folktale 113  
**SHATA JAN SAKSE TAI AI LAM**

Text © Kachin Orature Project 2024.  
Illustrations © Shawanang 2024.  
Supervised by Keita Kurabe  
Layout by Sa Rit

Based on L. Chang Myaw (speaker), Keita Kurabe (collector), Keita Kurabe (depositor), 2016.  
Shata Jan Sakse Tai Ai Lam (The Moonlight as a Witness). EAF+XML/MPEG/VND.WAV. KK1-0048 at catalog.paradisec.org.au. <https://dx.doi.org/10.4225/72/59888f7b03af1>

First published 2024

Published by  
Research Institute for Languages and Cultures of Asia and Africa (ILCAA)  
Tokyo University of Foreign Studies  
3-11-1, Asahi-cho, Fuchu-shi, 183-8534, Tokyo, JAPAN

ISBN 978-4-86337-547-5

This work was supported by  
- TUFs Field Science Commons  
- JSPS KAKENHI Grant Number JP24K03887  
- Description and Documentation of Language Dynamics in Asia and Africa (DDDLing), Research Institute for Languages and Cultures of Asia and Africa (ILCAA), Tokyo University of Foreign Studies



This work is licensed under a Creative Commons Attribution 4.0 International License.  
<https://creativecommons.org/licenses/by/4.0/>



# SHATA JAN SAKSE TAI AI LAM



Written by Kachin Orature Project  
Illustrations by Shawanang  
Supervised by Keita Kurabe

Ya hkai na maumwi a ga baw gaw “Shata Jan Sakse Tai Ai Lam”  
nga ai re.

Moi shawng de, kahtawng langai mi hta hpaga la lahkawng nga ai hte  
shan lahkawng gaw hpaga ga sa shagu mung grai awng ai majaw  
ja gumhpraw ni mung grai lu ai da.

Lani mi hta mung, shan lahkawng gaw kalang mi bai hpaga ga rawt  
ma ai da.







Dai shaloi mung shawoi na hte maren sha, hpaga grai awng ai hte  
ja gumhpraw ni mung grai lu ai da.

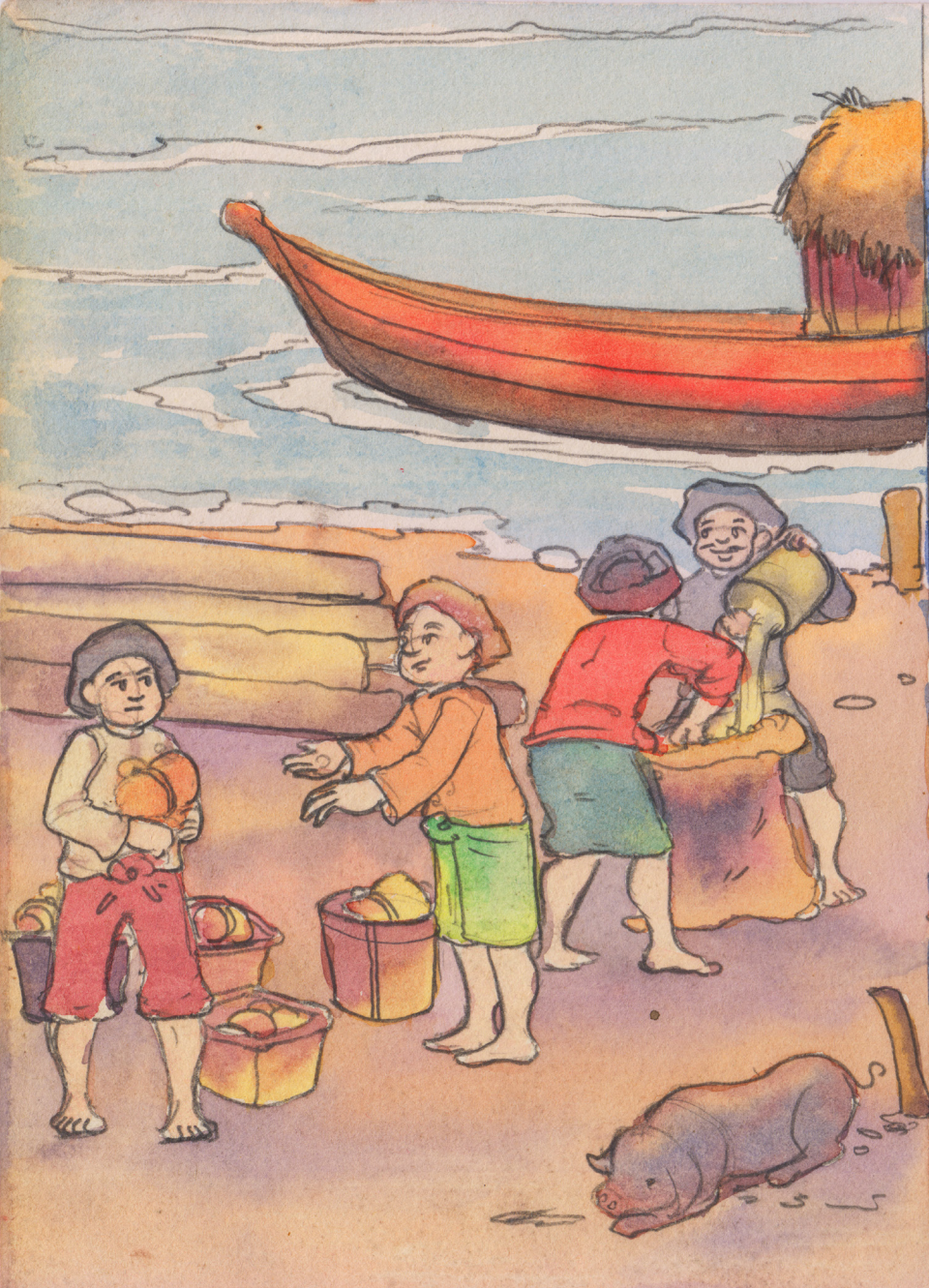
Dai shaloi manang langai mi gaw

“E, manang wa e, an lahkawng hpaga ni mung grai awng sai majaw”

“dai na gaw wora grai pyaw ai shara nga ai bum kawng de sa lam  
chyai ga,”

ngu nna shi manang hpe tsun ai da.







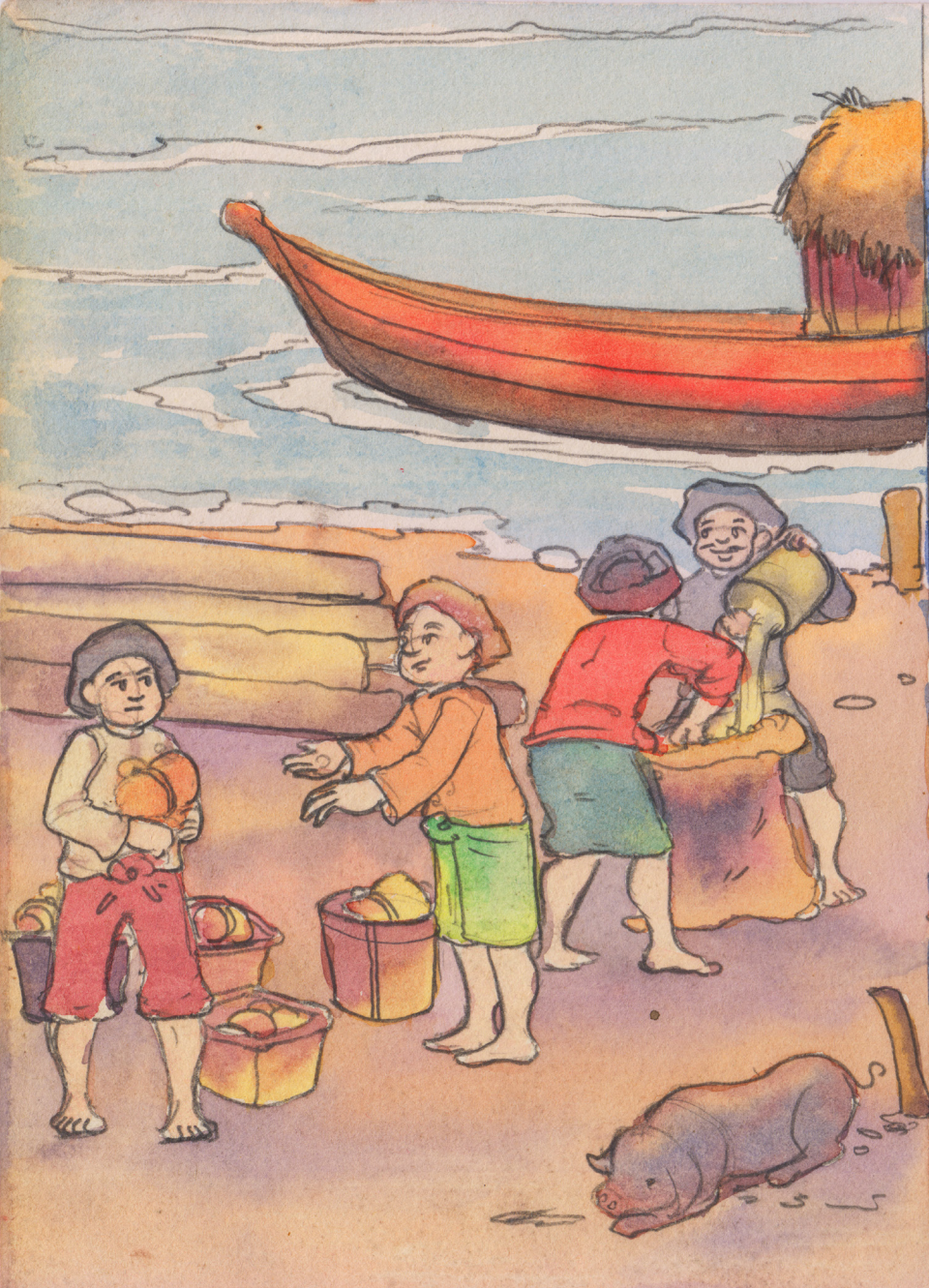
Manang wa mung “Mai ai le.”

“Hkawm chyai ga le,”

ngu nna shana rai yang

shan lahkawng gaw bum kawng langai mi de sa wam hkawm ma ai da.







Dai zawn bum kawng ntsa kaw du ai shaloi,

dai mi hkawm na matu saw shaga ai manang wa gaw, shi a sinat shaw nna she

“E, manang wa, dai na gaw nang hpe ngai ndai sanat hte sat kau nna”

“nang na ja gumhpraw ni hpe ngai la mat wa sana ngu nna myit ai,”  
ngu nna tsun ai da.

Dai shaloi, wora manang wa mung grai mau, grai hkrit kajawng mat ai da.







Rai tim, shi manang hpe, “E, manang wa e, nang ngai hpe n sat shi yang,”

“an lahkawng a lapran hta sakse langai mi tam da ga,” ngu bai tsun ai da.

Dai hku tsun ai shaloi wora la wa mung, “Hpa baw sakse tam na ma?”

“Ndai kaw hpa sakse mung n nga ai,” ngu ai da.

Dai shaloi wora sat hkrum na la wa gaw

“E, an lahkawng a sakse gaw ndai shata jan she rai u ga yaw,” ngu nna shata jan hpe madun let tsun dat ai da.







Dai shaloi, wora sinat lang da ai la wa mung  
shi manang hpe sinat hte gap sat kau dat ai hte  
manang wa na ja gumhpraw ni mung bang la rai nna  
nta de wa mat wa ai da.







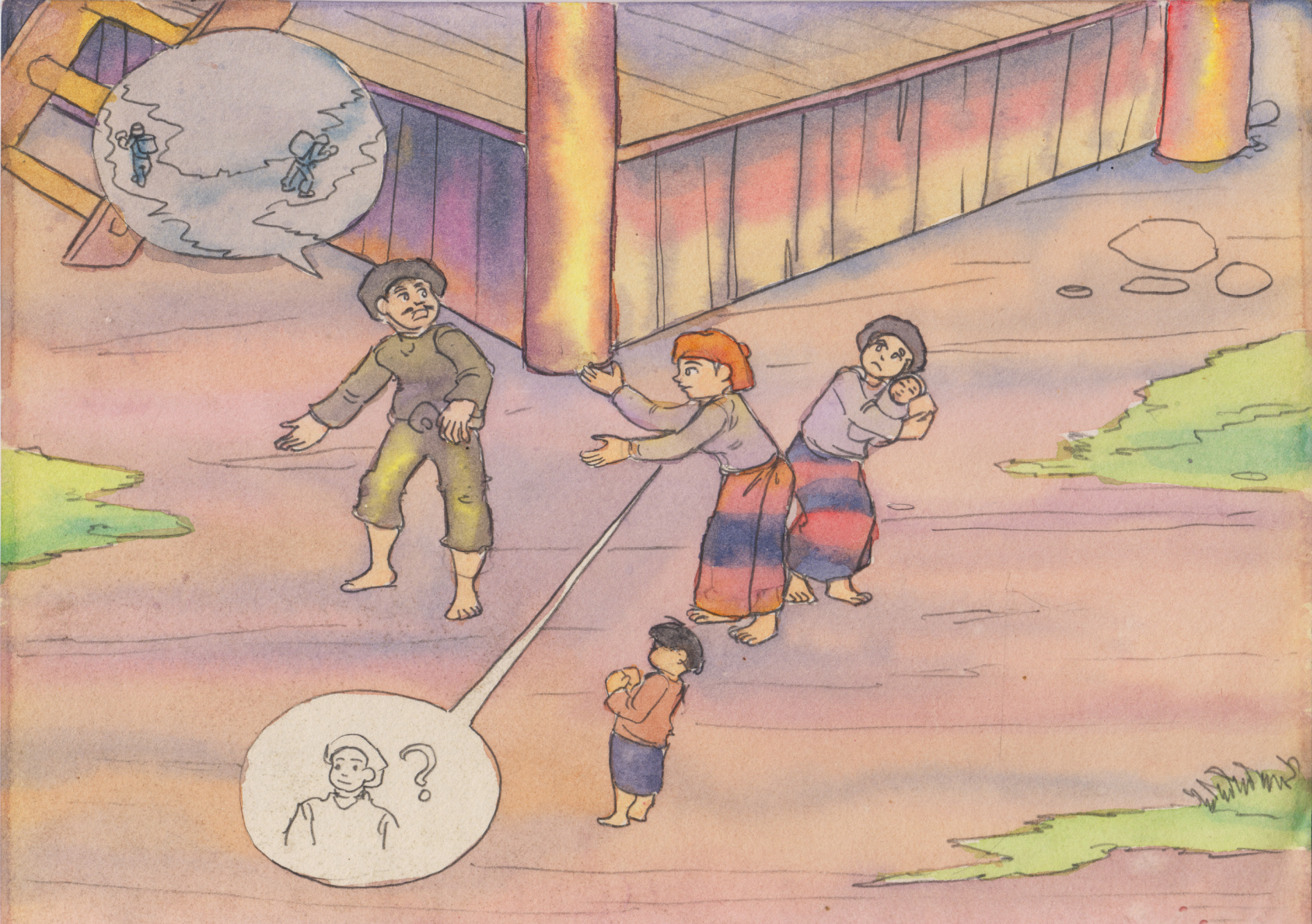
Dai la wa nta de du nna grai na sai rai tim, wora la wa bai n du wa ai majaw,

dai si mat ai wa na madu jan hte nta masha ni gaw dai sat kau ai la wa hpe wa san ai da.

“Nang hte rau hpaga ga sa mat ai ngai na madu wa gaw ya du hkra n wa shi ai.”

“Gara kaw rai?” ngu nna wa san ai da.







Dai shaloi wora la wa gaw

“E, an lahkawng lam kaga ga hku she sa mat wa na hpaga ga ai she re majaw”

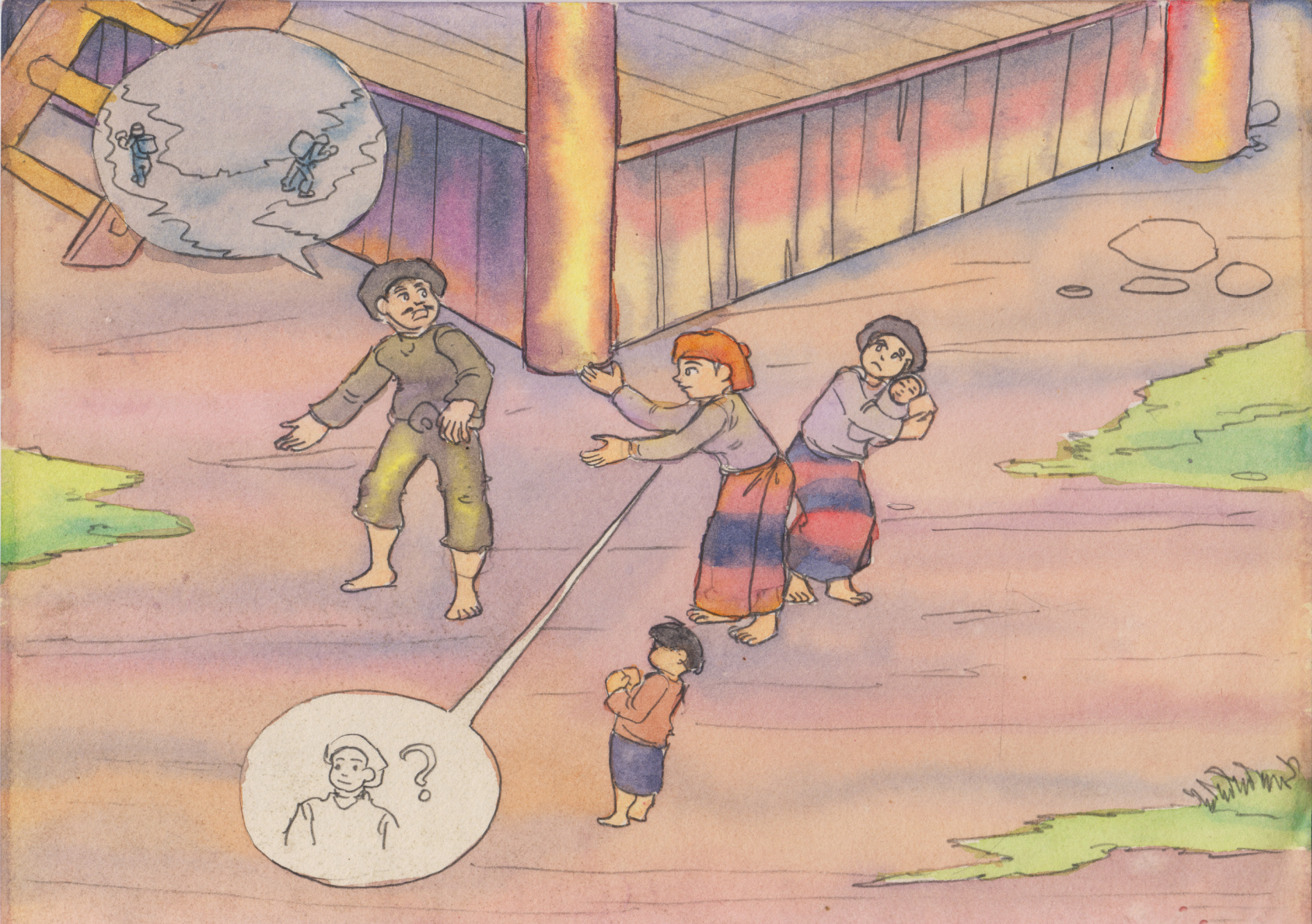
“shi gara de sa mat ai re ngai n chye ai.”

“Ngai n mu ai,” ngu nna masu ai da.

Dai si mat ai wa na madu jan hte nta masha ni, jinghku jingyu ni mung

dai si mat ai wa hpe grai tam ai rai tim, n mu tam ma ai da.







Dai hpang dai manang wa hpe sat kau ai la wa mung kaga mare de  
htawt mat rai nna

aten ram ram na ai hpang, dinghku de rai nna,

lana mi hta gaw, shi na madu jan hte wam hkawm ai shaloi

shata jan hpe mu ai majaw,

dai la wa gaw “Ngai ndai shata jan hpe mu yang grai mani mayu ai,”

ngu madu jan hpe tsun ai da.







Dai shaloi, madu jan gaw “Hpa baw na mani mayu ai ngai hpe tsun dan rit le,” ngu san yang

“E, tsun dan n mai ai,” sha ngu ai da.

Dai shaloi madu jan mung, “Hpa majaw ngai hpe pyi n mai tsun dan ai ma?”

“Nang n tsun dan yang gaw ngai hpe n tsaw ra ai ga rai nga.”

“Nang ngai hpe tsaw ra yang gaw tsun dan na rai nga,” ngu bai tsun ai da.







Dai shaloi madu wa mung, “E, dai hku n re. Nang hpe gaw tsaw ra ai.”

“Rai tim, n mai tsun dan ai,” sha ngu ai da.

Madu jan mung “Nang ngai hpe kaja n tsaw ra na n tsun dan ai rai nga.”

“Nang n tsun dan na rai yang”

“ngai gaw nye nu nye wa nta, mayu nta de wa mat wa sana,”

ngu nna shagyeng tsun dat ai da.







Dai zawn madu jan nau tsun wa ai majaw, dai la wa mung hpang jahtum gaw tsun dan dat ai da.

“Moi ngai na manang hte hpaga ga sa ai shaloi”

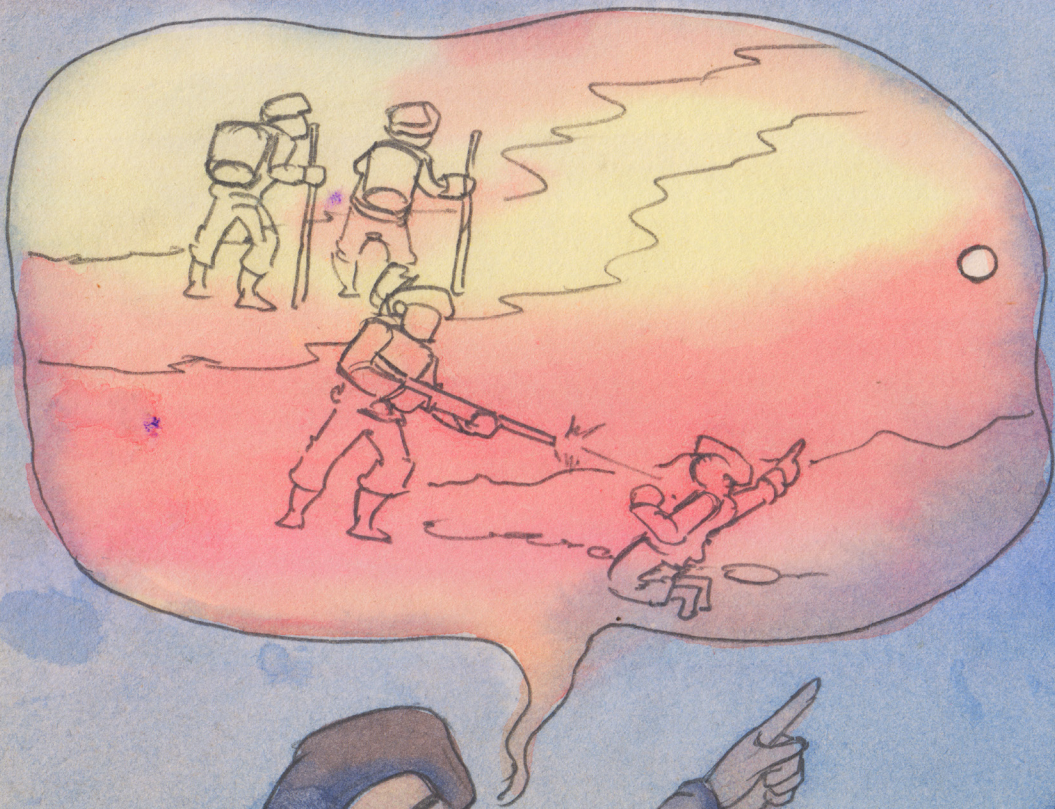
“Shi na ja gumhpraw ni ra ai majaw, shi hpe sat kau na ngu ai shaloi,”

“Shi gaw dai zawn ngai gap sat na lam hpe hpa ga mung n chye shaga ai”

“Ndai shata jan hpe wa she, sakse galaw da na nga tsun da ai majaw”

“ngai gaw ndai shata jan htoi ai hpe mu shagu grai mani mayu ai re,”  
ngu tsun dan dat ai da.







Dai zawn na la ai hpang dai la wa na madu jan gaw

“Nye madu wa gaw shata jan hpe mu yang grai mani mayu ai nga na”

“Ngai gaw grai mau kau sai,” ngu nna she

madu wa tsun dan ai lam ni hpe

wora htingbu ni hpe tsun dan, le ra htingbu ni hpe tsun dan rai nna,





let hte let let hte let,

dai shiga gaw sat kau hkrum ai la wa a dinghku masha ni na ai  
shaloi gaw

kalang ta mare up hkang ai rung de sa shawk nna

dai sat kau ai la wa hpe wa rim la nna jep ai da.







Dai la wa mung, gara hku mung n lu masu mat sai majaw,  
shi shi manang hpe sat kau nna  
grai sung ai krung de kabai bang kau dat ai majaw  
kadai mung n mu tam ai re lam,  
shi na manang wa shi n sat shi yang  
shata jan hpe sakse tawn da na lam ni hpe tsun dan ai lam ni hpe  
tsun nna yin la ai da.







Dai majaw, dai sat kau ai la wa a sut gan ni yawng hpe mung bai  
zing la nna

sat kau hkrum ai la wa na madu jan hte nta masha ni hpe garan jaw  
ai hte

dai manang hpe sat ai la wa mung prat htum ai ten du hkra

htawng kaw sharawng da hkrum mat ai da.

Dai majaw, sat hkrum mat ai la wa tsun ai hte maren,

shata jan sakse tai ya ai hte teng man ai lam hte tara rap ra ai lam  
hpe bai lu la ai re da.











# WUNPAWNG MAUMWI MAUSA

Kachin Folktales

