



# AZEP AI NUM

## A LAM

Written by Kachin Orature Project

Illustrations by Naw Ra

Supervised by Keita Kurabe

Kachin Folktale 126  
**AZEP AI NUM A LAM**

Text © Kachin Orature Project 2024.  
Illustrations © Naw Ra 2024.  
Supervised by Keita Kurabe  
Layout by Sa Rit

Based on M. King Nang (speaker), Keita Kurabe (depositor), 2017. Azep ai num (The Nagging Wife).  
X-WAV/MPEG/XML. KK1-0967 at catalog.paradisec.org.au. <https://dx.doi.org/10.4225/72/5989e789e0afb>

First published 2024

Published by  
Research Institute for Languages and Cultures of Asia and Africa (ILCAA)  
Tokyo University of Foreign Studies  
3-11-1, Asahi-cho, Fuchu-shi, 183-8534, Tokyo, JAPAN

ISBN 978-4-86337-560-4

This work was supported by  
- TUFs Field Science Commons  
- JSPS KAKENHI Grant Number JP24K03887  
- Description and Documentation of Language Dynamics in Asia and Africa (DDDLing), Research Institute for Languages and Cultures of Asia and Africa (ILCAA), Tokyo University of Foreign Studies



This work is licensed under a Creative Commons Attribution 4.0 International License.  
<https://creativecommons.org/licenses/by/4.0/>



# AZEP AI NUM A LAM



Written by Kachin Orature Project

Illustrations by Naw Ra

Supervised by Keita Kurabe

Ya hkai dan na maumwi gaw “Grai Azep Ai Num Langai A Lam” re.

Moi shawng de dinghku langai mi hta madu wa hpe dang sha ai num langai mi nga ai da.

Shan la gaw dai mare hta sha gaw lauban sahte ngu ai kaw lawm ai da.

Hkauna ni nga ai. Mam ni nga ai. Lu lu lusha nga mu nga mai ai yan re ai da.

Rai ti mung madu jan wa gaw rau marau madu wa hpe galoi kaja n mu ai da.



Madu wa hpa galaw tim azep, la wa gaw galoi mung hkam sharang ai da.

Shi gaw “Ndai lam hku n jaw ai majaw rai na re,” ngu nna

kaga lam hku bai shakut yang mung madu jan gaw sha azep ai da.

Dai hku azep shatsang ai da.

Lani mi hta madu jan gaw madu wa hpe pawt na nta kaw na gawt shale kau ai da.

Dai hku gawt kau rai jang she madu wa gaw nta kaw na pru mat wa ra ai da.



Shi gaw lagaw yawng ai de hkawm pru mat wa sai da.

Shi gaw hka shi langai kaw du mat ai da.

Du rai yang “Ndai hka shi hpe gara hku rap ra na kun?” ngu nna shi gaw myit taw ai da.

“Gara hku rap ra na re n chye ai,” ngu myit taw ai shaloi makau kaw taukaw langai hpe mu ai da.

Shi gaw “Aw, ara! Rai sa! Ya ngai ndai taukaw hpe naw sat sha na re,”  
ngu hkyeng ai shaloi taukaw wa gaw ga shaga le wa ai da.





Taukaww gaw tsun ai

“E, salang myit su wa e, ngai hpe sha gaw hkum sat sha law.”

“Ngai hpe gun rai na myi di na hkawm u. Ndai hka hpe rap u,” ngu tsun ai da.

Shaloi she dai la wa mung kaja wa sha dai taukaww hpe gun rai nna myi pat rai di nna hka hpe rap ai da.

Rap ngut na myi hpaw dat yang grai pyaw ai nta de du mat wa ai da.

Taukaww gaw shi na nta masha ni hte dai la wa hpe shachyen ya ai da.



Taukaw gaw shi nta masha ni hpe

“Ndai wa gaw ngai hka shi makau kaw nga taw ai shaloi ngai hpe hkye la ai wa re,” ngu nna nta masha ni hte dai la wa hpe shachyen ya ai da.

Taukaw a dum nta masha ni mung dai la hpe atsawm sha hkap hkalum la rai nna yup hkring sa na matu tsun ai da.

Shana shaloi she dai taukaw a kanu kawa ni dum nta masha ni gaw shi hpe tsun ai da.

“Nang gaw anhte hte n bung ai re majaw ndai kaw grai na hkra n mai nga ai.”

“Dai majaw nang hte seng ang ai, nang hte bung ai shara de bai nang wa ra ai yaw,” ngu na shi hpe tsun ai da.



“Mai ai. Nanhte dai hku tsun ai rai jang gaw ya ngai bai hkawm mat wa na,” ngu nna

dai taukaw nta kaw na bai matut hkawm na hkyen ai da.

Shaloi taukaw nta kaw na ni gaw dai la wa hpe shat makai langai, jum makai langai, majap makai langai di nna

makai masum shi hpe kumhpa jaw dat ai da.

“Ndai makai masum hpe gun na wa u yaw,” ngu tsun dat ai da.

Shi gaw bai matut hkawm sai da.



Hkawm rai nna shara mi kaw du rai yang kaw si wa ai majaw

“Myi taukaw nta na ni jaw dat ai shat makai hpyen sha na bai matut hkawm na re,”

ngu nna shi gaw shat makai hpe hpyen yu dat ai da.

Hpyen yu dat yang shat makai wa ja tawng hkrai she rai taw ai da.

Rai jang she shi gaw “Ga, ndai gaw shat makai n rai nga.”

“Ja makai she rai nga. Ja tawng she rai nga,” ngu nna mau mat ai da.





Rai nna shi gaw hpang kaga makai langai re jum makai hpe bai hpyen yu dat ai da.

Shaloi gaw gumhpraw tawng hkrai bai byin taw ai da.

Shaloi jang she majap makai hpe bai hpyen yu dat ai shaloi gaw magri hkrai bai byin taw ai da.

Dai hku na shi gaw dai makai masum hpe hpyen rai nna mau nga ai shaloi

masha unawng kaba wa shi dung nga ai shara de du wa ma ai da.



Dai masha unawng uwa gaw

“Anhte ndai shara kaw grai htuk manu dum ai mare de la mat ga,”

ngu nna langai hte langai tsun hkat nga ai da.

Shaloi jang shi mung bai myit yu ai da.

“Nta de mung n mai wa, madu jan mung ngai hpe nta kaw na gau shale kau ai rai.”

Dai majaw shi mung ndai masha ni hte hpawng rai di nna ndai kaw nta ni shachyaw rai nna nga mat ai da.



Nta shachyaw rai nna myi na masha ni hpe woi awn woi zinlum galaw  
rai yang she

dai masha ni gaw shi hpe hkawhkam ngu na ahkaw ahkang aya  
jaw rai na

dai masha unawng a hkawhkam byin mat ai da.

Dai kaw shi gaw grai shakut ai, mare masha ni mung bungli grai galaw  
shaja ma ai da.

Dai majaw mare dai gaw aten kadun hte grai galu kaba ai mare, grai lu  
sut lu su ai mare tai mat ai da.



Dan re shaloi myi shi hpe gawt kau ai num jan wa rai yang gaw

shi hpe gawt kau ai hpang kade n na yang dum nta kaw nga ai mam ni  
mung ma mat, mam yet ai ni mung yet mat,

shi langai hkrai rai rai yang yi sun hkauna mung n lu galaw sha mat  
rai nna shi gaw grai matsan mat ai da.

Grai matsan mat rai na myi na shi madu wa de da ai mare na  
gumhkawng ai lam ni shi gaw na re shaloi dai mare de shat lu sha  
hpyi sha sa ai da.

Shi gaw hku hku mat nna dai mare kaw sa hpyi sha re jang dai  
hkawkam wa gaw shi na madu jan grai azep ai num hpe mu ai da.

Hkawkam wa mung dai num hpyi sha ai daram yawng jaw dat ai da.





Rai ti mung madu jan wa gaw shi gawt kau ai shi madu wa gaw  
dai mare na hkawhkam re hpe n chye ai da.

Dai hku kalang mi hpyi sha, bai ma mat, hpang na kalang bai dai mare  
de bai sa hpyi sha, bai ma mat,

dai hku rai na masum lang ngu na lang hta sa hpyi sha ai shaloi gaw

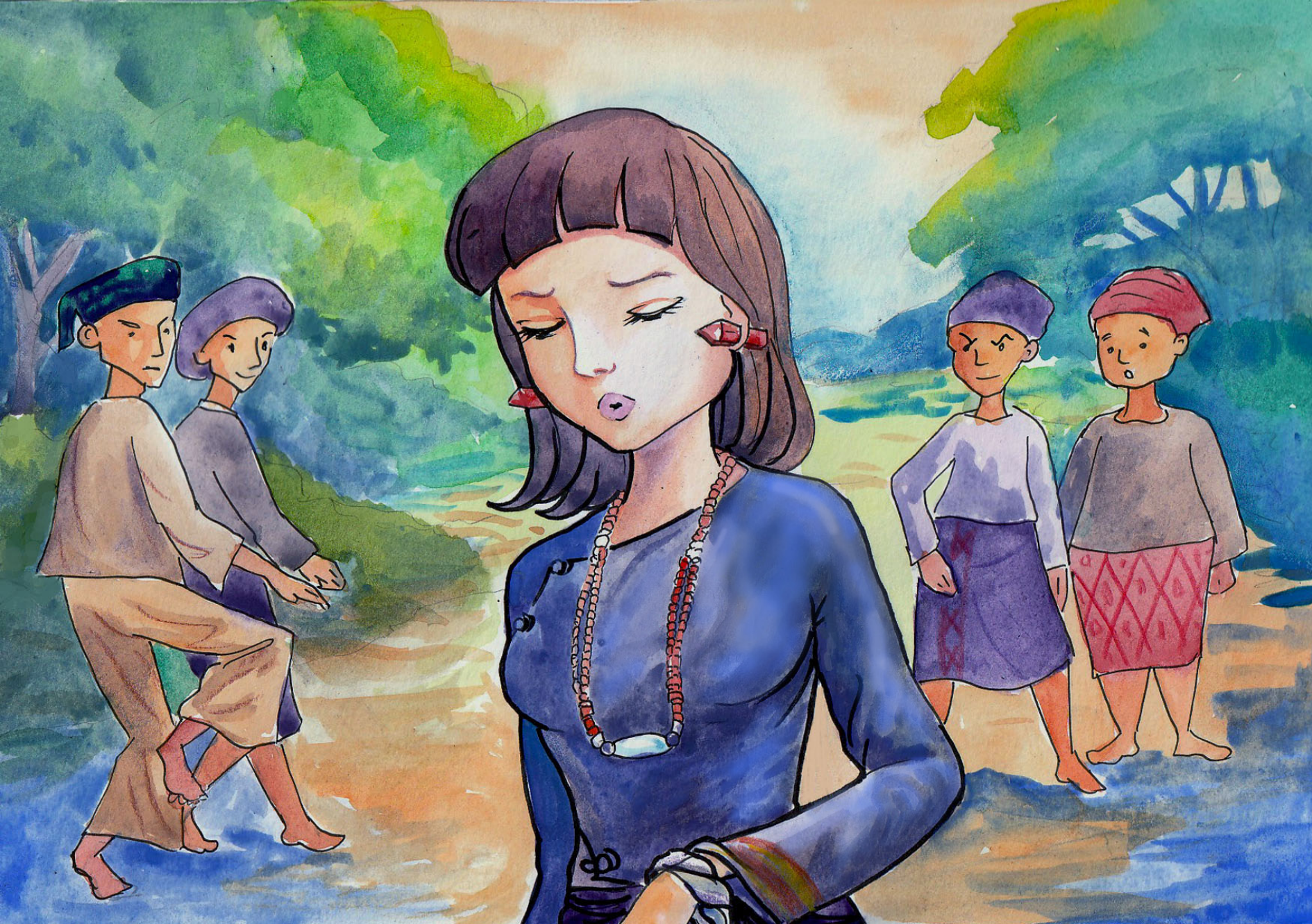
dai mare na hkawhkam wa gaw shi madu wa re chye u ga ngu nna

malu masha ni mung jaw na shi nan sa du rai na tsun dan kau dat ai da.



Shi gaw myi lai wa sai lam ni ma hkra dai num hpe hkai dan re shaloi  
num jan gaw grai kaya mat ai da.

Grai kaya mat na nga nan mat ga nga yang mung,  
mare masha ni ma hkra shi na lam chye mat na mung tsang ai majaw  
shi gaw grai kaya na kaya si mat ai da.







# WUNPAWNG MAUMWI MAUSA

Kachin Folktales

