

JAN LANGAI SHA

Pru Ai Lam



Written by Kachin Orature Project

Illustrations by Shawanang

Supervised by Keita Kurabe

Kachin Folktale 145

JAN LANGAI SHA PRU AI LAM

Text © Kachin Orature Project 2024.

Illustrations © Shawanang 2024.

Supervised by Keita Kurabe

Layout by Sa Rit

Based on Jat Sinwa (speaker), Keita Kurabe (depositor), 2019. Jan Langai Sha Pru Ai Lam (Why Only One Sun Rises). EAF+XML/MPEG/VND.WAV. KK1-2369 at catalog.paradisec.org.au.

<https://dx.doi.org/10.26278/5fa178a49e331>

First published 2024

Published by

Research Institute for Languages and Cultures of Asia and Africa (ILCAA)

Tokyo University of Foreign Studies

3-11-1, Asahi-cho, Fuchu-shi, 183-8534, Tokyo, JAPAN

ISBN 978-4-86337-579-6

This work was supported by

- TUFIS Commons

- JSPS KAKENHI Grant Number JP24K03887

- Description and Documentation of Language Dynamics in Asia and Africa (DDDLing), Research Institute for Languages and Cultures of Asia and Africa (ILCAA), Tokyo University of Foreign Studies



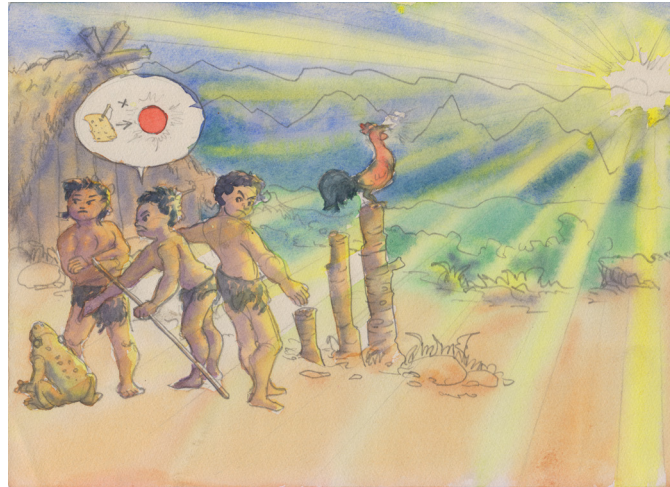
This work is licensed under a Creative Commons Attribution 4.0 International License.

<https://creativecommons.org/licenses/by/4.0/>



JAN LANGAI SHA

PRU AI LAM



Written by Kachin Orature Project
Illustrations by Shawanang
Supervised by Keita Kurabe

Ya hkai na maumwi gaw “Jan Langai Sha Pru Ai Lam” nga ai maumwi re.

Moi shawng de, shinggyim masha ni nnan paw pru ai aten hta

ndai mungkan ga hta jan jahku ting pru ai da.

Dai ten hta shinggyim masha ni hta mung ningmai naw tu ai da.

Dai zawn jan jahku ting pru ai majaw,

mungkan ga hta nga ai shinggyim masha ni hte dusat dумыeng ni gaw
manu mana kahtet nna nga yak ma ai da.



Nau kahtet ai majaw,

lu sha tam sha mung n mai rai nna grai nga yak ai da.

Shani shana jan ja nna grai kahtet ai majaw,

shinggyim masha ni hte dusat dumpyeng ni gaw zuphpawng langai mi jawm hpawng ma ai da.

Dai zuphpawng hta shanhte yawng gaw jan ni yawng hpe shachyut kau na matu myit hkrum ma ai da.



Dai zawn myit hkrum bawngban da ai hte maren,

shinggyim masha ni hte dusat dumpyeng ni gaw, nri ni, nhtu ni, nlung
ni lang rai nna,

dai grai kahtet shangun ai jan ni hpe shachyut jahprawng kau ai
shaloi gaw

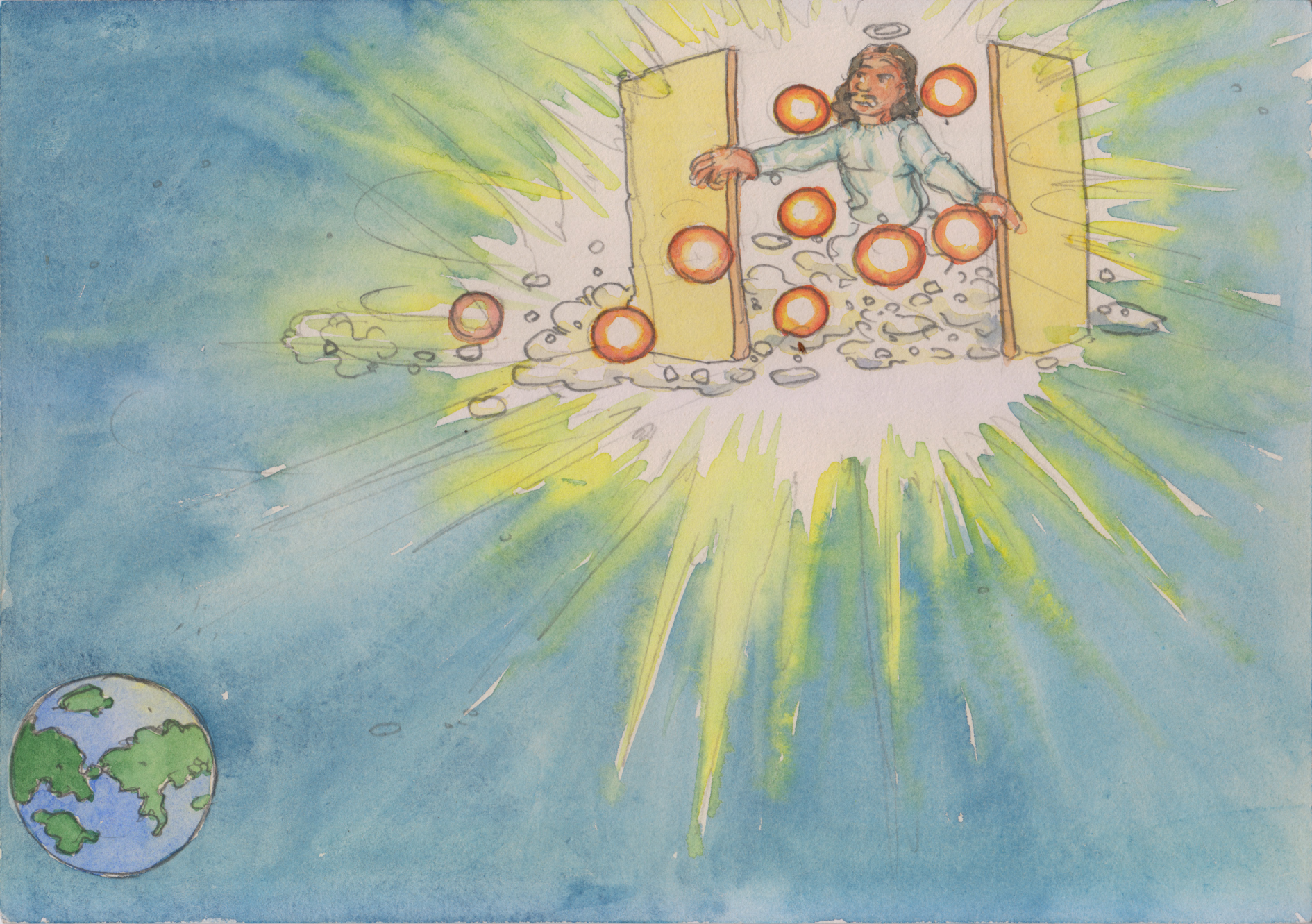
jan du wa gaw dai jan jahku hte hpe chyinghka la htem di kau ai da.



Jan du wa chyinghka la htem di kau ai majaw

dai shani kaw na gaw

mungkan ga kaw jan langai mung n pru mat sai da.



Dai zawn jan n pru mat wa ai loi na ai shaloi gaw,

shinggyim masha ni hte dusat dумыeng ni gaw

katsi mung katsi, kashung mung kashung, ningsin mung sin rai nna

grai bai nga n pyaw wa sai da.

Lu sha tam sha mung n mai rai nna

grai nga yak jam jau wa sai da.



Dai shaloi, shinggyim masha ni hte dusat dumpyeng ni gaw kalang bai bawngban ai da.

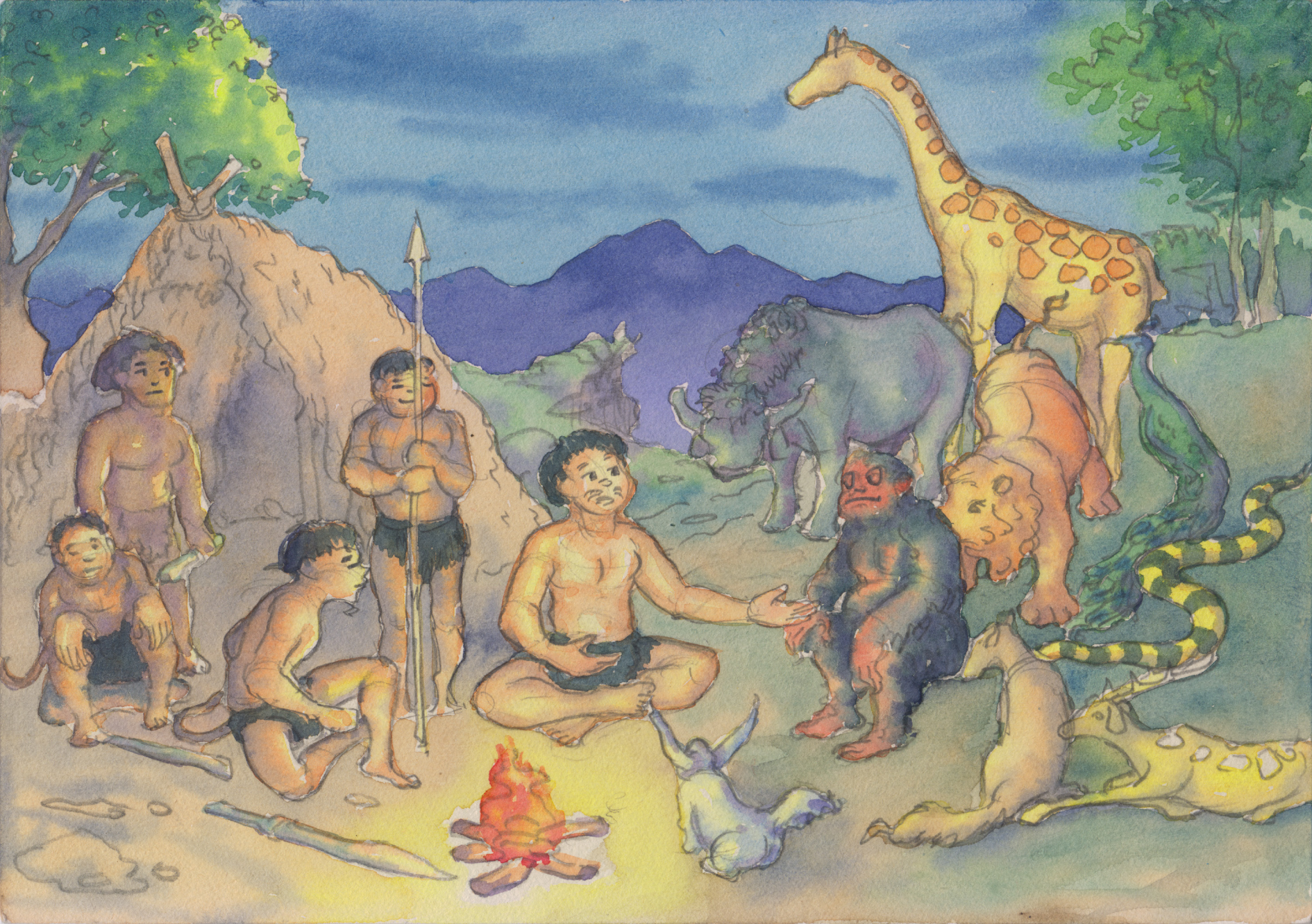
“Um... jan mung anhte a matu grai ahkyak ai re majaw”

“Jan du wa hpang de sa nna anhte sa tawngban ga.”

“Anhte grai nga yak ai majaw”

“Jan bai jaw rit, ngu nna wa hpyi ga,” ngu nna bai bawng ban la ai hte

jan du wa hpang de lung wa nna sa tawngban ai hte jan sa hpyi ma ai da.



Dai shaloi jan du wa gaw hpa baw tsun ai i nga yang,

“Nanhte ni hku na anhte jan ni hpe kalang mi shachyut kau sai re majaw”

“Nanhte hpa manu jahpu n lawm ai sha gaw anhte jan n lu hpaw ya sai.”

“Nanhte manu jahpu hte sa wa yang gaw, ngai jan bai hpaw ya na,”
ngu nna tsun dat ai da.

Dai zawn jan du wa tsun ai shaloi gaw,

shinggyim masha hte dusat dumpyeng ni gaw mungkan ga de bai yu
wa nna zuphpawng bai wa dung ma ai da.



“Jan du wa tsun ai hte maren, manu jahpu jaw na matu anhte ni yawng kaw ahkun hkanse hta ga.”

“Dai shaloi gaw jan du wa anhte hpe jan hpaw ya na nga ai,” ngu nna jawm bawngban ai da.

Dai shaloi, shinggyim masha ni gaw jan du wa hpe jaw na ahkun hkanse hku nna ningmai hpe daw jaw ai da.

Dai majaw, anhte shinggyim masha ni gaw dai ni du hkra

anhte a maidang shatin marung daw hpe “Jan Mari Daw” ngu nna shaga ai re da.



Gumra ni mung moi gaw ya na zawn n re ai sha, nrung tu ai re da.

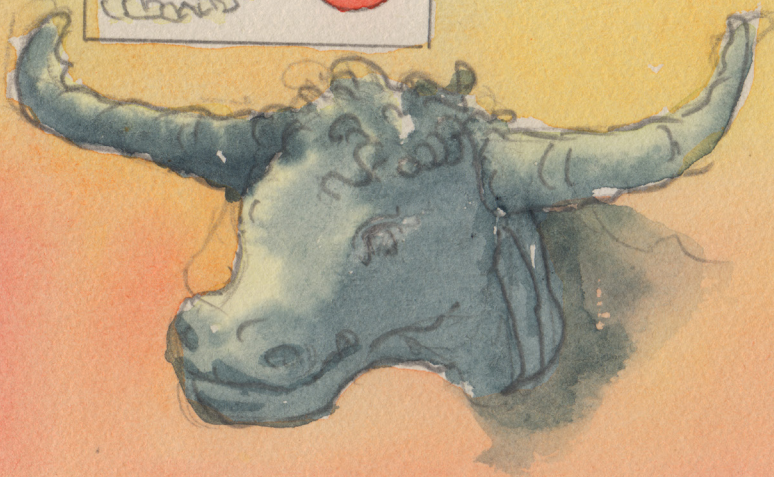
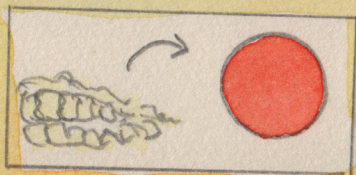
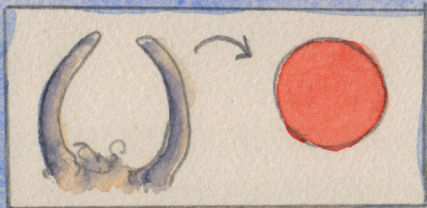
Rai tim, jan du hpe jaw na matu ahkun hkanse hku nna shi a nrung
hpe daw jaw kau ai majaw,

dai ni du hkra nrung n tu mat ai re da.

Dumsu nga ni mung moi gaw lawu lahta wa tu ai re da.

Rai tim, jan bai lu la na matu ahkun hkanse hku nna, shi a lahta na
wa hpe raw jaw kau ai majaw,

dai ni du hkra dumsu nga ni kaw lahta wa n tu mat ai re da.



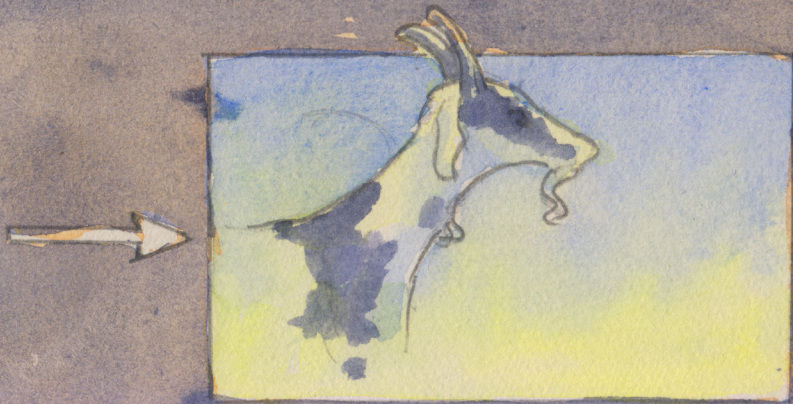
Gwi ni gaw moi shawng de nrung tu ai re da.

Shinggyim masha ni mam htu ai shaloi na numhkaw ngam ni hpe
mata na matu

dai nrung tu ai majaw, grai mata yak nna

dai jan mari ai lam n byin shi ai shaloi kaw na

shi a nrung hpe bainam ni hpe jaw kau ai da.



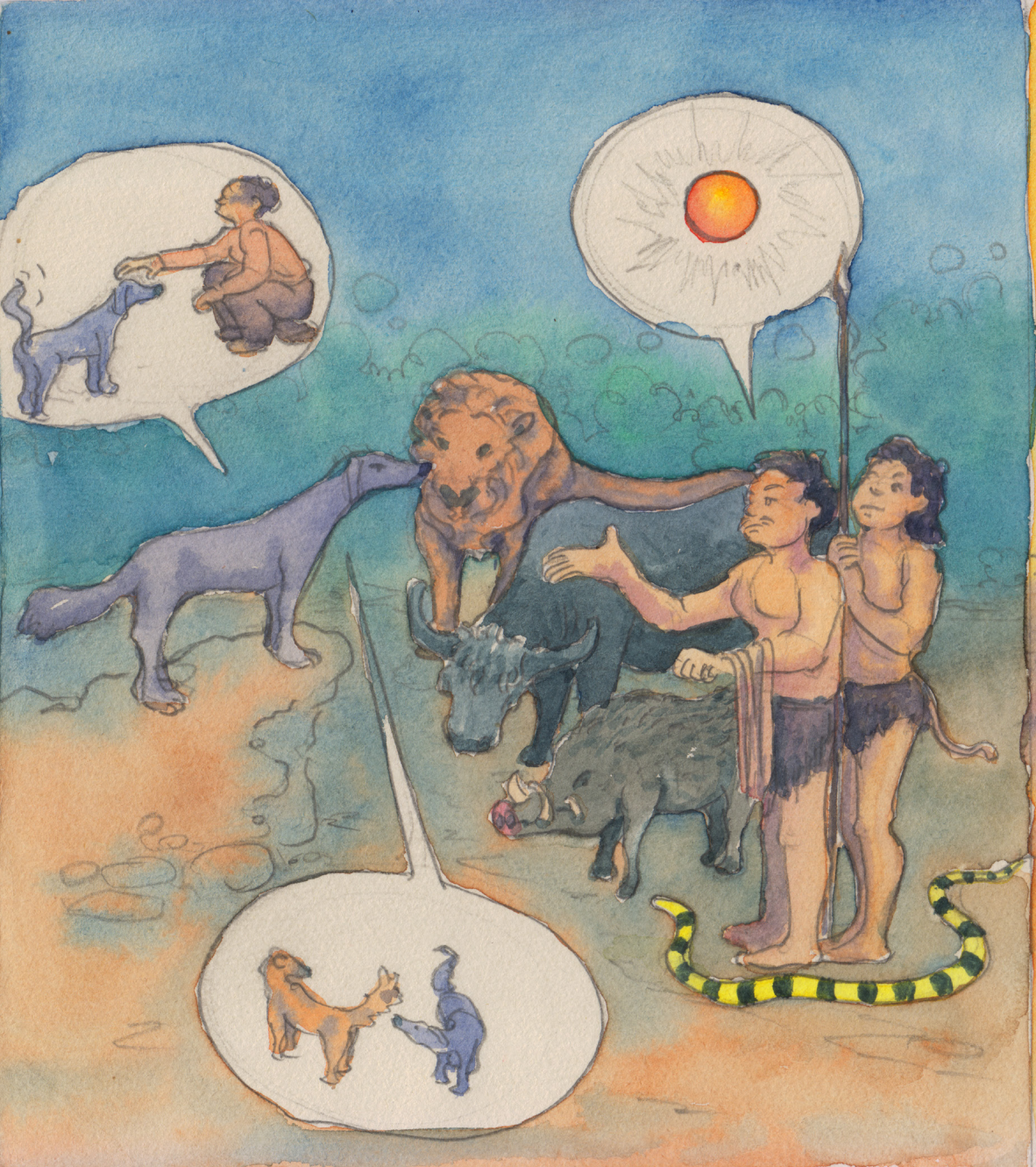
Dai majaw, gwi hpe jan mari na matu ahkun hkanse hku nna ningmai hpe daw ya u, ngu ai shaloi gaw,

gwi gaw “Ngai na ningmai gaw ngai na madu hpe hkungga jaw ai shaloi”

“Kabu gara hkap tau la ai shaloi, manang ni hte shakram hkat ai shaloi jai lang ra ai re.”

“Dai majaw n lu jaw ai,” ngu nna jan mari ai shaloi hpa ahkun hkanse mung n bang ai.

Dai majaw gwi ni gaw dai ni du hkra jan pru ai hte shinglet hpe shadap nna nga ra ai re da.



Matut nna, U patsip kaw bai jan mari na matu ahkun hkanse wa hta ai shaloi

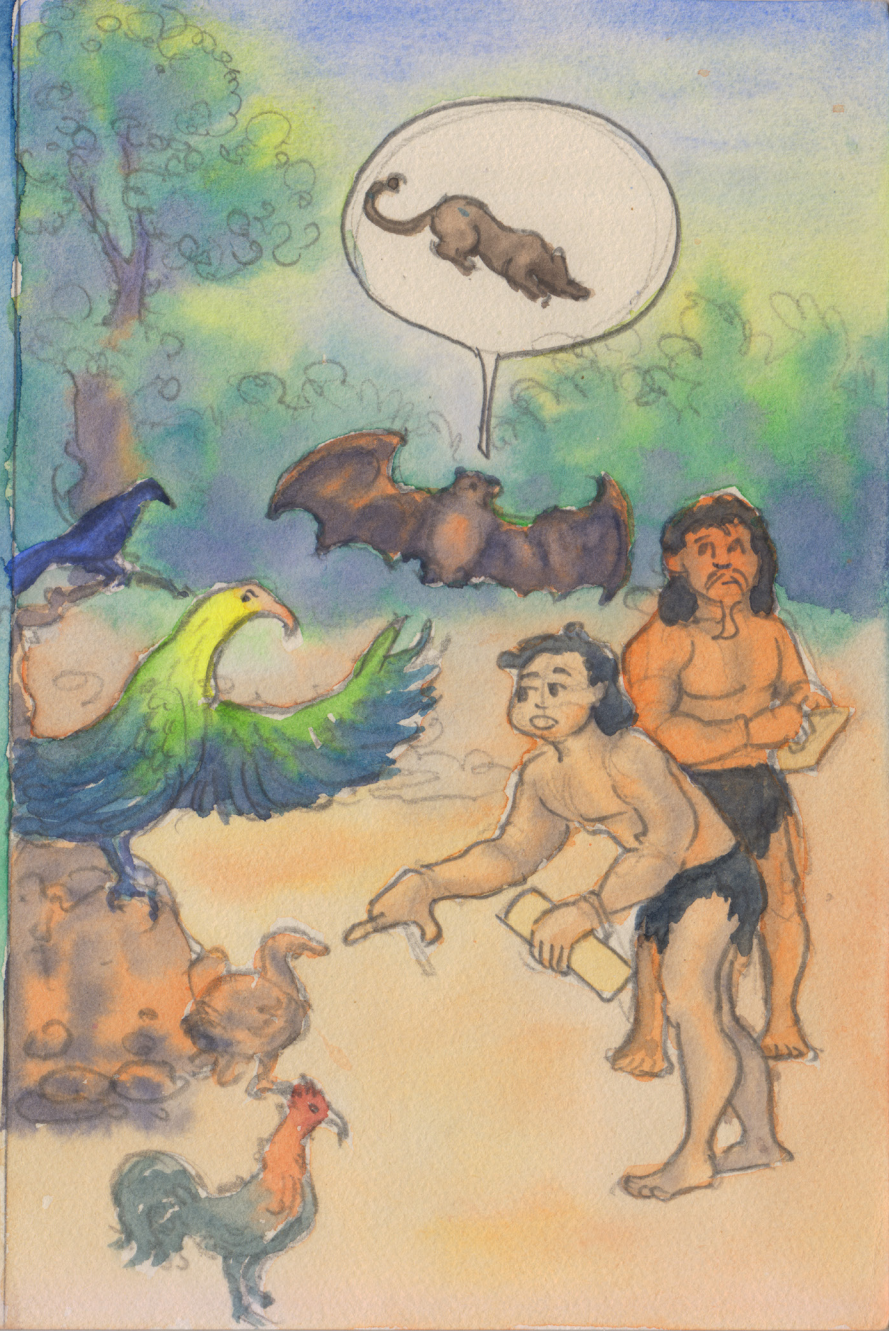
U patsip gaw “Ngai gaw U amyu she re majaw,”

“U ni kaw ahkun hkanse hta yang she bang na,” ngu tsun nna shi na shingkaw hpyan dan ai da.

Dai zawn tsun ai majaw, hpang na kalang bai U ni hpe ahkun hkanse wa hta ai ngu nna tsun yang,

U patsip gaw “Ngai gaw Yu amyu she re majaw,”

“Yu ni hpe ahkun hkanse hta ai shaloi she bang na,” ngu nna wa nying dan ai da.



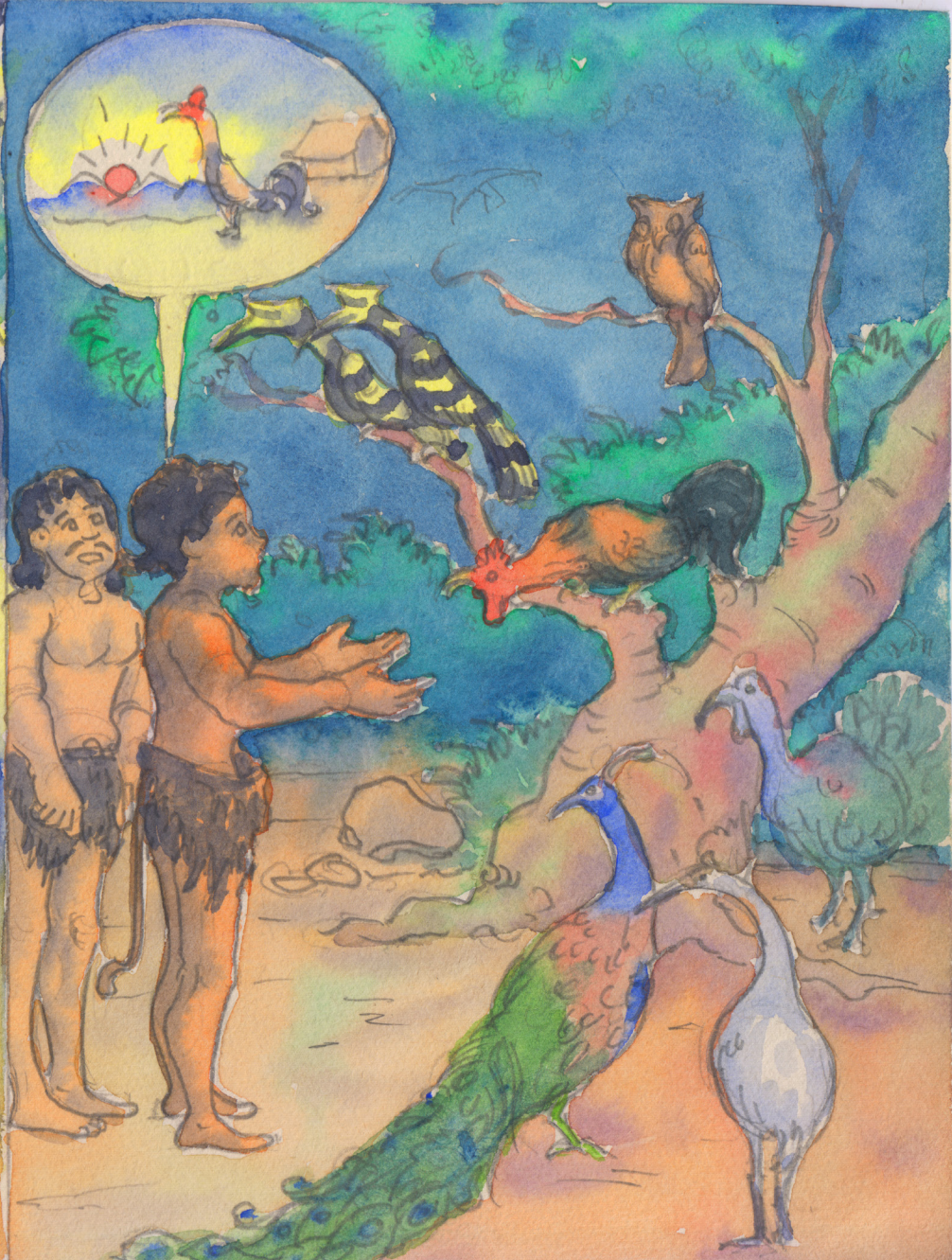
Dai zawn rai nna, U patsip gaw jan mari ai kaw ahkun hkanse n bang ai re majaw,

dai ni du hkra nsin kaw sha tam sha ra ai hte, lung pu kata hkan, kawa ndum kata hkan sha nga ra ai re da.

Ndai mabyin hta hkan nna ga gale galau chye shaga ai ni hpe mung “Masha Patsip” nga nna tsun chye ma ai re da.

Hpang jahtum hku nna shut chyt hpe jan mari na matu ahkun hkanse wa hta ai shaloi,

shu chyt gaw “Ngai gaw hka kata kaw nga ai amy she re majaw, jan mari n ra ai,” ngu nna jan mari ai kaw n lawm ai da.



Dai zawn rai nna, ahkun hkanse ni yawng hta la ngut ai hpang, jan lu sana re majaw,

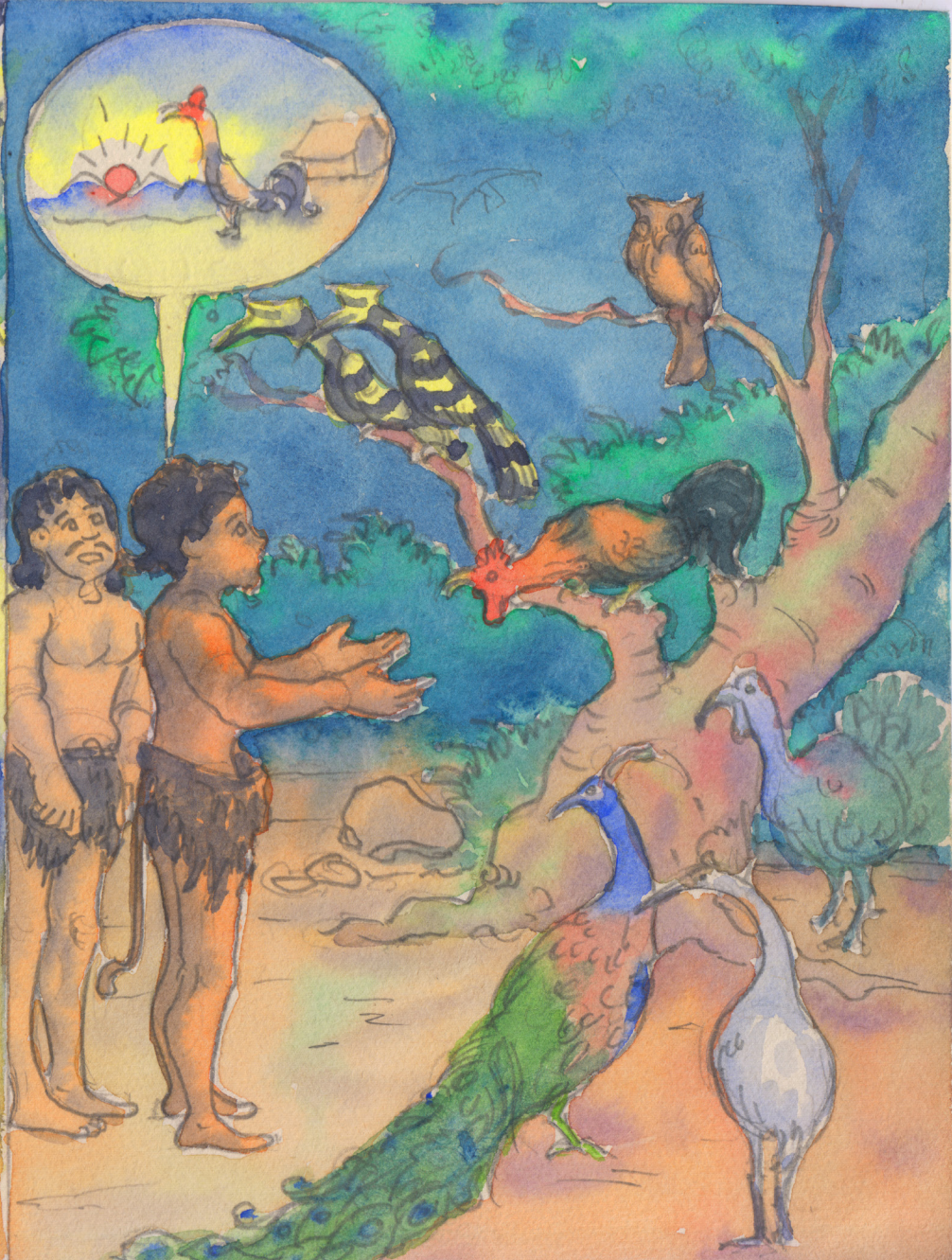
shinggyim masha ni gaw U hpe lit shatsam ai da.

“U e, nang gaw na hpa ai amyuu re majaw, jan du wa jan chyinghka hpaw dat ai nsen na jang”

“Anhte yawng hpe chye shangun rit,” ngut nna lit kaba shatsam ai da.

Dai majaw, dai ni du hkra jan pru wa yang

U ni goi ai gaw “Jan du wa jan chyinghka hpaw sai law,” ngu nna marawn ai ga re da.



Dai zawn rai nna shinggyim masha ni hte dusat dumpyeng ni gaw
jan du wa hpang de bai sa nna

shanhte hta lu la ai ahkun hkanse ni hte jan hpaw ya na matu bai
sa hpyi shawn ma ai da.

Dai shaloi jan du wa gaw “E, rai sai.”

“Hpawt de rai yang, ngai jan chyinghka hpaw dat ya sana re.”

“Jan jahku rai yang nanhte grai kahtet ai nga ai re majaw”

“Jan langai sha hpaw ya na re,” ngu nna tsun dat ai da.



Dai zawn jan du wa tsun ai hte maren,

hpang jahpawt gaw jan langai a chyinghka hpaw dat ya ai shaloi,

U gaw jan chyinghka hpaw dat sai lam marawn jahtau dat ai hte

shinggyim masha ni hte dusat dumpyeng ni gaw jan hpe kabu gara
let hkap la lu ma ai da.



Dai zawn shanhte ni jan pru wa ai hpe yu nga ai shaloi,
shu chyt gaw “Ngai mung jan pru ai hpe yu na,” ngu nna sa wa ai da.

Dai shaloi, shinggyim masha ni gaw “Nang gaw jan mari ai kaw n
lawm ai majaw,”

“Nang jan n mai yu ai,” ngu nna tsun ai da.

Dai hku tsun ai majaw, shu chyt gaw shingdu de kayin nna
nga nga ai da.

Dai zawn nga nga yang, jan pru wa nna jan gaw shu chyt myi man
yawng nga ai maga de mung du wa ai da.



Dai shaloi shu chyit gaw “E... nang sinna maga de mung bum ni hkan jan kra wa sai law,” ngu nna marawn dat ai da.

Dai shaloi shinggyim masha ni gaw “Nang i, jan mari ai kaw gaw n lawm!”

“Ya jan pru wa yang gaw yu lawm ai i?” ngu nna yawng jawm mahti da ai da.

Dai majaw, shu chyit gaw dai ni du hkra machyit mahkat re ai re da.

Dai zawn rai nna, dai shani kaw na ndai mungkan ga kaw jan langai sha pru mat wa ai re da.



WUNPAWNG MAUMWI MAUSA

Kachin Folktales

