



# DI BU GALAW SHA AI

*Shan Ji Dwi A Lam*

Written by Kachin Orature Project

Illustrations by Shawanang

Supervised by Keita Kurabe

Kachin Folktale 147

**DI BU GALAW SHA AI SHAN JI DWI A LAM**

Text © Kachin Orature Project 2024.

Illustrations © Shawanang 2024.

Supervised by Keita Kurabe

Layout by Sa Rit

Based on L. Ja Tawng (speaker), Keita Kurabe (depositor), 2017. Ga Di Bu Galaw Sha Ai Shan Ji Dwi A Lam (The Pot-Making Grandfather and Granddaughter). EAF+XML/MPEG/VND.WAV. KK1-2095 at catalog.paradisec.org.au. <https://dx.doi.org/10.26278/5fa174ba816ea>

First published 2024

Published by

Research Institute for Languages and Cultures of Asia and Africa (ILCAA)

Tokyo University of Foreign Studies

3-11-1, Asahi-cho, Fuchu-shi, 183-8534, Tokyo, JAPAN

ISBN 978-4-86337-581-9

This work was supported by

- TUFIS Commons

- JSPS KAKENHI Grant Number JP24K03887

- Description and Documentation of Language Dynamics in Asia and Africa (DDDLing), Research Institute for Languages and Cultures of Asia and Africa (ILCAA), Tokyo University of Foreign Studies

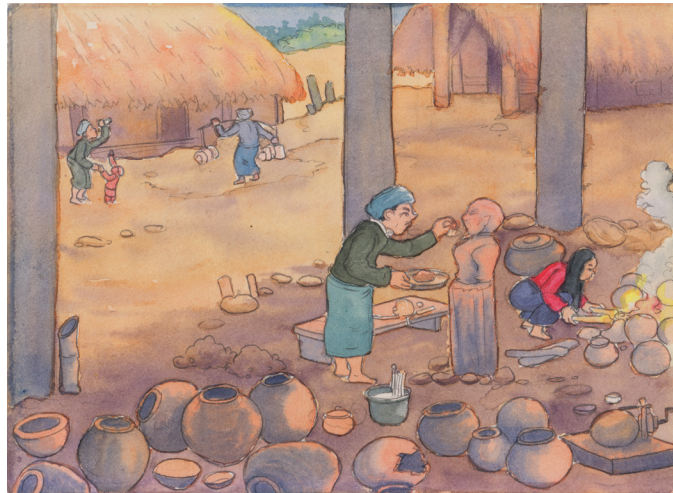


This work is licensed under a Creative Commons Attribution 4.0 International License.

<https://creativecommons.org/licenses/by/4.0/>



# DI BU GALAW SHA AI SHAN JI DWI A LAM



Written by Kachin Orature Project  
Illustrations by Shawanang  
Supervised by Keita Kurabe

Ya hkai na maumwi gaw “Di bu galaw sha ai shan ji dwi a lam”  
nga ai maumwi re.

Moi shawng de, mare langai mi hta

di bu galaw sha ai dingla langai mi hte shi kashu num kasha,  
shan ji dwi nga ma ai da.

Kaji dwi gaw di bu ni mung galaw let,

shinggyim ga hte masha sumla ni mung shachyaw ai da.



Dai mare gaw hka mung grai yak ai mare re majaw

hka hpe grai tsan ai shara de sa ja ra ai da.

Lani mi na aten hta,

dai kashu gaw grai tsan ai shara langai mi kaw hka sa ja ai da.



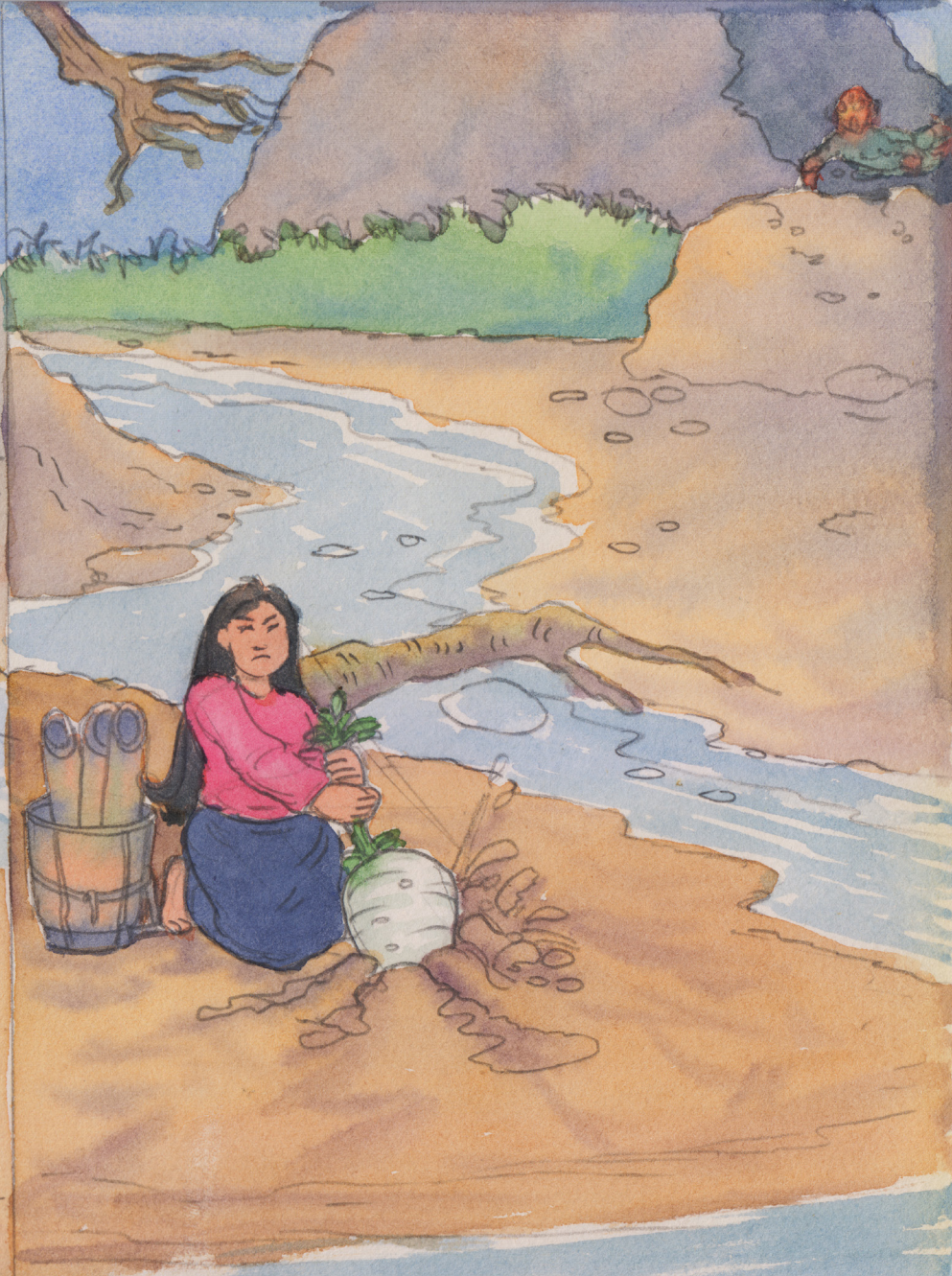
Shi hka sa ja ai shaloi,

laubu pawt langai mi tu nga ai hpe mu ai majaw,

sa gang baw dat ai ngu yang,

hka ni grai law hkra pru wa ai da.





Dai shaloi, dai kashu num kasha mung,

“Um... anhte mare masha ni hka grai yak ai re wa”

“Ya ndai kaw hka ndai ram ting pru wa yang gaw,”

“Mare masha ni hpe naw sa tsun dan na re,” ngu nna sha naw myit  
nga yang

Sha Lawa langai mi she nbung kaba bung nna du wa ai hte

shi hpe shapoi la mat wa ai da.



Dai hku shapoi mat wa nna shi hpe rawng da ai hte,

“Nang ndai hka pru ai lam hpe mare masha ni hpe tsun dan na nga myit taw ai.”

“Nang tsun dan na rai yang gaw si ra na re,” ngu nna

Sha Lawa wa gaw tsun dat ai.



Dai shaloi, num kasha mung, “E... ngai hpe nye ji dwi grai la nga na sai.”

“Ngai kadai hpe mung n tsun dan na nngai.”

“Ngai hpe dat ya rit,” ngu nna bai htang ai da.

Dai shaloi, Sha Lawa mung, “E, nang ndai hka pru ai lam hpe mare masha ni hpe tsun dan ai rai yang gaw,”

“Ngai nang hpe kawa sat sha kau na re,” ngu nna tsun let dat dat ya ai hte

nbung hte bai myi na shara de sa sa dat ya ai da.



Dai kaw na dai kashu num kasha mung mare de bai du wa ai  
shaloi gaw,

kaji dwi hte pyi n lu hkrum shi yang,

mare masha ni gaw shawoi shanhte hka ja ja re ai shara kaw hka  
n pru mat nna

mare masha ni yawng hka grai yak nga ai majaw,

grai matsan dum ai hte,

myi shi mu da ai hka grai pru ai shara hpe tsun dan kau dat ai da.





Mare masha ni mung grai pyaw let

hka ni grai law hkra wa ja la ma ai da.

Dai zawn mare masha ni grai law hkra hka wa ja la ai hpe mu ai shaloi,

Sha Lawa wa gaw myi na num kasha tsun dan ai re hpe chye mat ai da.



Dai majaw dai num kasha hpe bai shapoi la nna, “Nang ga sadi n dung ai majaw,”

“Nang hpe ngai kawa sat sha kau sana,” ngu nna tsun dat ai da.

Dai shaloi num kasha gaw “E, ngai nye ji dwi hte sha nga ai re.”

“Nye ji dwi hte n lu hkrum shi ai. Chyeju hte naw hkrum la shangun rit.”

“Hkrum ngut yang nang sha kau tim mai sai,” ngu nna bai tsun dat ai da.

Dai shaloi Sha Lawa mung kaji dwi hte jahkrum na matu bai dat dat ya ai da.



Dai zawn rai nna, dai num kasha gaw kaji dwi hte hkrum ai shaloi

byin ai lam ni yawng tsun dan ai hte

mare masha ni hka lu na matu shi si hkam na rai tim tsun dan kau ai  
lam hpe

kaji dwi hpe tsun dan ai da.

Dai shaloi kaji dwi gaw, “Nye kashu e, hpa myit hkum tsang!”

“Dai na Ah Ji nang hte raw re ai sumla hpe shachyaw na.”



“Rai tim, kara gaw gara kaw na mung n chye shatu la ai majaw,”

“Nye kashu nang na kara baw la ra na re,” ngu tsun let,

kashu hte grai bung ai sumla hpe shinggyim ga hte shachyaw ngut nna,

kashu na kara hpe mung shakap ai da.





Kashu na kara hpe mung shakap,  
ngut jang mare masha ni hpe mung tsun dan ai hte  
mare masha ni gaw dai kashu hte bung ai ga sumla hpe  
wo hka grai pru ai shara de wa hpai tawn da ai da.



Dai hku sa hpai tawn da nna, Sha Lawa wa n mu shi ai shaloi,

dai kaw na bum ntsa kaw marang grai htu wa ai hte hka ni  
grai lwi wa nna

myi na kashu num kasha hte grai bung ai shinggyim ga hte galaw da ai  
masha hkrang mung

hka kaw yawng lawm mat wa ai hte

kara sha kra taw ai da.



Dai zawn kara sha kra taw ai hpe Sha Lawa wa mu ai shaloi gaw

“Aw... num kasha ndai hpe ngai pyi n kawa sat ra sai she rai nga.”

“Shi na shi hka kaw yawng si mat sai,” ngu nna shi na shara de bai wa mat wa ai da.

Dai majaw, mare masha ni mung dai kaw na pru ai hka hpe mung matut nna atsawm sha lu ja lang mat wa ai hte

kaji dwi yan kashu mung hpa n ra mat ai sha, grai pyaw let matut nna nga mat wa ai da.









# WUNPAWNG MAUMWI MAUSA

Kachin Folktales

