

CHYAMUT WA

Written by Kachin Orature Project

Illustrations by Shawanang

Supervised by Keita Kurabe

Kachin Folktale 150

CHYAMUT WA

Text © Kachin Orature Project 2024.

Illustrations © Shawanang 2024.

Supervised by Keita Kurabe

Layout by Sa Rit

Based on W. Awng (speaker), 2016. Keita Kurabe (depositor), Chyamut Wa (The Rusty Man).

EAF+XML/MPEG/VND.WAV. KK1-0170 at catalog.paradisec.org.au.

<https://dx.doi.org/10.4225/72/59889148a92e3>

First published 2024

Published by

Research Institute for Languages and Cultures of Asia and Africa (ILCAA)

Tokyo University of Foreign Studies

3-11-1, Asahi-cho, Fuchu-shi, 183-8534, Tokyo, JAPAN

ISBN 978-4-86337-584-0

This work was supported by

- TUFIS Commons

- JSPS KAKENHI Grant Number JP24K03887

- Description and Documentation of Language Dynamics in Asia and Africa (DDDLing), Research Institute for Languages and Cultures of Asia and Africa (ILCAA), Tokyo University of Foreign Studies



This work is licensed under a Creative Commons Attribution 4.0 International License.

<https://creativecommons.org/licenses/by/4.0/>



CHYAMUT WA



Written by Kachin Orature Project
Illustrations by Shawanang
Supervised by Keita Kurabe

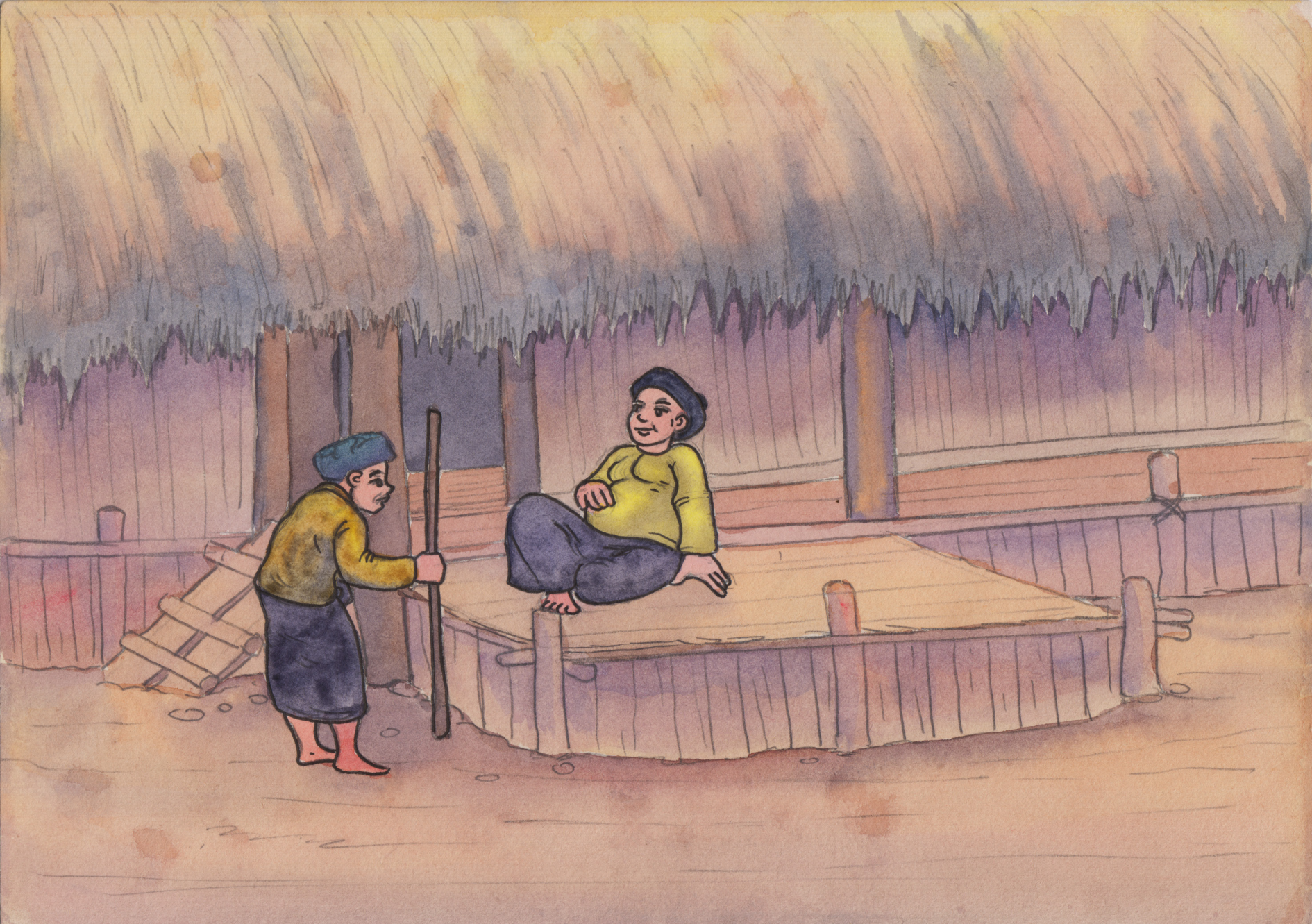
Ya hkai na maumwi gaw “Chyamut Wa” nga ai maumwi re.

Moi shawng de gumgai hte dingla nga ai da.

Shan lahkawng gaw kashu kasha grai ra ai rai tim n lu ai da.

Hpang jahtum asak grai kaba wa jang she,

dinggai wa gaw ma hkum rai wa ai hte kasha langai shangai ai da.



Rai tim ma dai gaw mala la kaji ai - katsu daram sha law ai da.

Dai majaw shan lahkawng gaw ma dai hpe bau kaba na hpe gaya ai da.

Rai tim sat kau na mung n wam ai da.

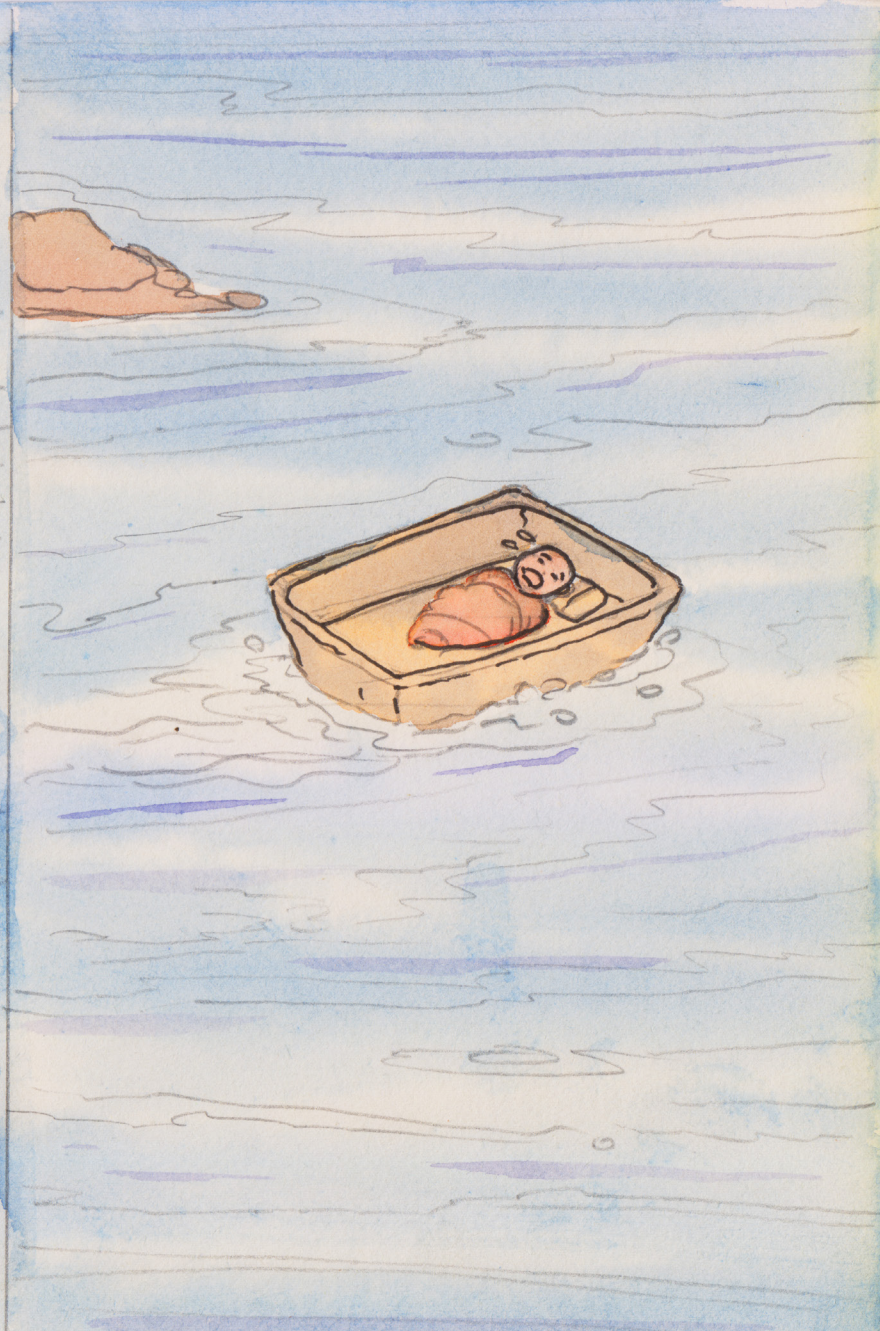


Dai majaw wawn langai kaw bang nna hka de shayawng kau dat ai da.

Dai hku shayawng kau dat ai shaloi gaw,

dai hka na hka nam maga de na grai tsan ai hka kau kaw

hpyi hpai num ngu ai langai mi nga ai da.



Hpyi hpai num ngu ai gaw shinggyim masha gaw rai tim nat hpan
mung loi mi lawm ai baw amyu re.

Shinggyim masha hte bung tim,

shinggyim masha hta machye machyang hte hpung shingkang grau
nga ai baw re da.

Dai hpyi hpai num gaw hka kaw hka shin nga ai shaloi,

ma hkrap ai nsen na nna yu dat yang

wawn kaw yawng wa ai ma hpe mu dat ai da.



Dai shaloi hpyi hpai num gaw hpa baw tsun ai i nga yang

“Hpung rawng nna galu kaba na masha rai yang gaw, hka kau de sit wa u!”

“Si na masha rai yang gaw, hka nu de matut yawng mat u!” ngu tsun dat ai shaloi

dai wawn gaw hka kau de sit wa ai hte

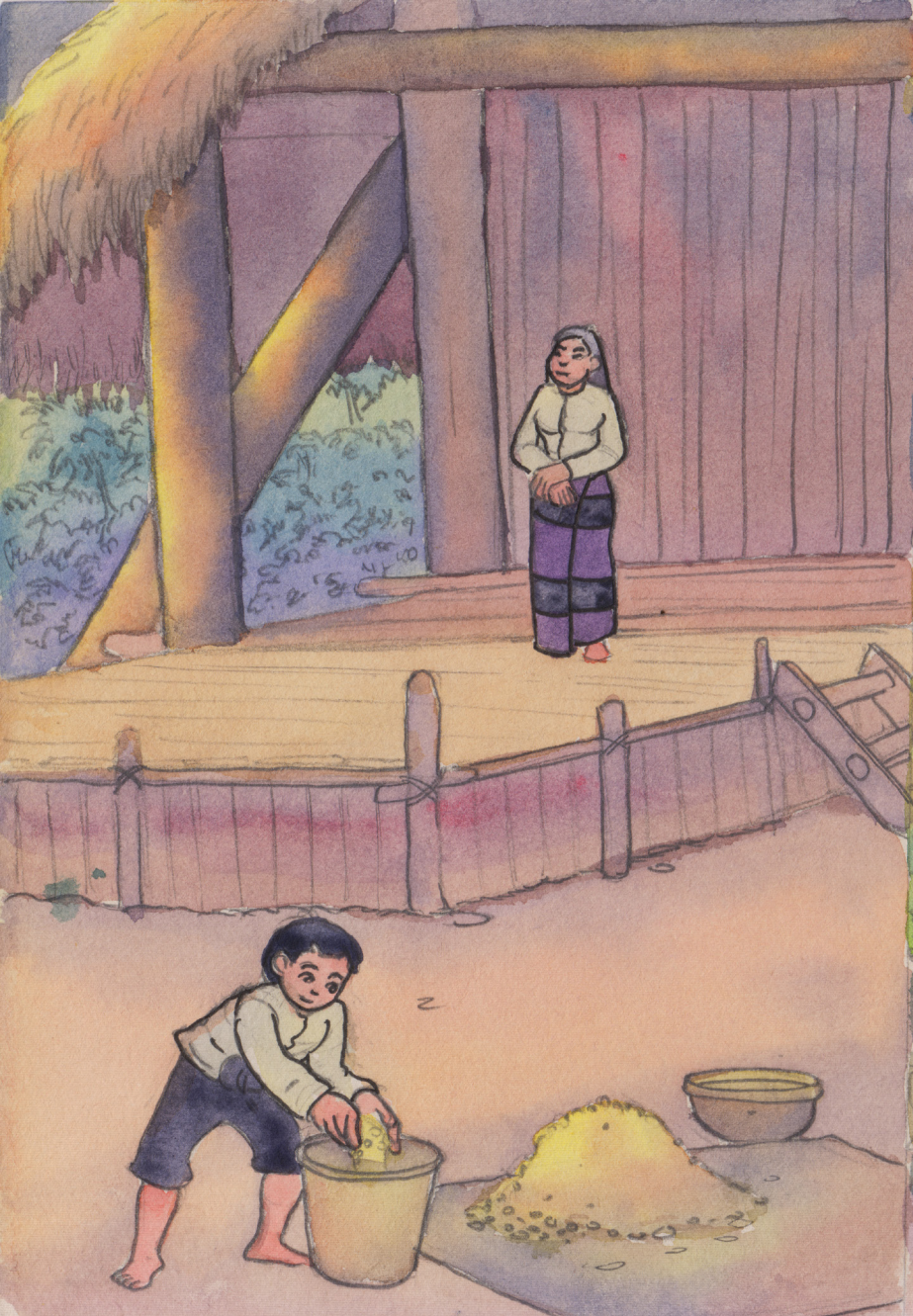
hpyi hpai num gaw dai ma hpe bau la nna

dai ma gaw shabrang tai wa sai da.



Dai zawn shabrang rai wa ai shaloi gaw,

hpyi hpai num gaw ma hpe sun de woi sa ai da.



Sun de du ai shaloi gaw namlap langai mi hpe di la nna she

“Ma e, ndai namlap hpe kabai dat nna”

“Sumbra shagawng byin wa u! ngu tsun dat yang”

“Byin wa ai baw re,” ngu tsun dan ai da.

Ma dai gaw kanu n mu ai shaloi

dai namlap langai mi hpe di nna nhpye kaw bang la dat ai da.



Hpyi hpai num gaw kaga namlap langai hpe bai madun nna she

“Ma e, ndai namlap hpe kabai dat na,”

“Wan shagawng e grang u! ngu tsun dat yang,”

“Grai kaba ai wan shagawng tai wa ai baw re,” ngu nna tsun dan ai da.

Dai shaloi mung ma dai gaw dai namlap hpe kanu n mu ai shaloi di gun
la ai da.



Matut nna kaga namlap hpe bai madun nna she,

“Ma e, ndai gaw hka shagawng grang u! ngu kabai dat yang,”

“Hka shagawng grang wa ai baw hpan re,” ngu nna bai tsun dan ai da.

Dai namlap hpe mung di makoi gun la sai da.



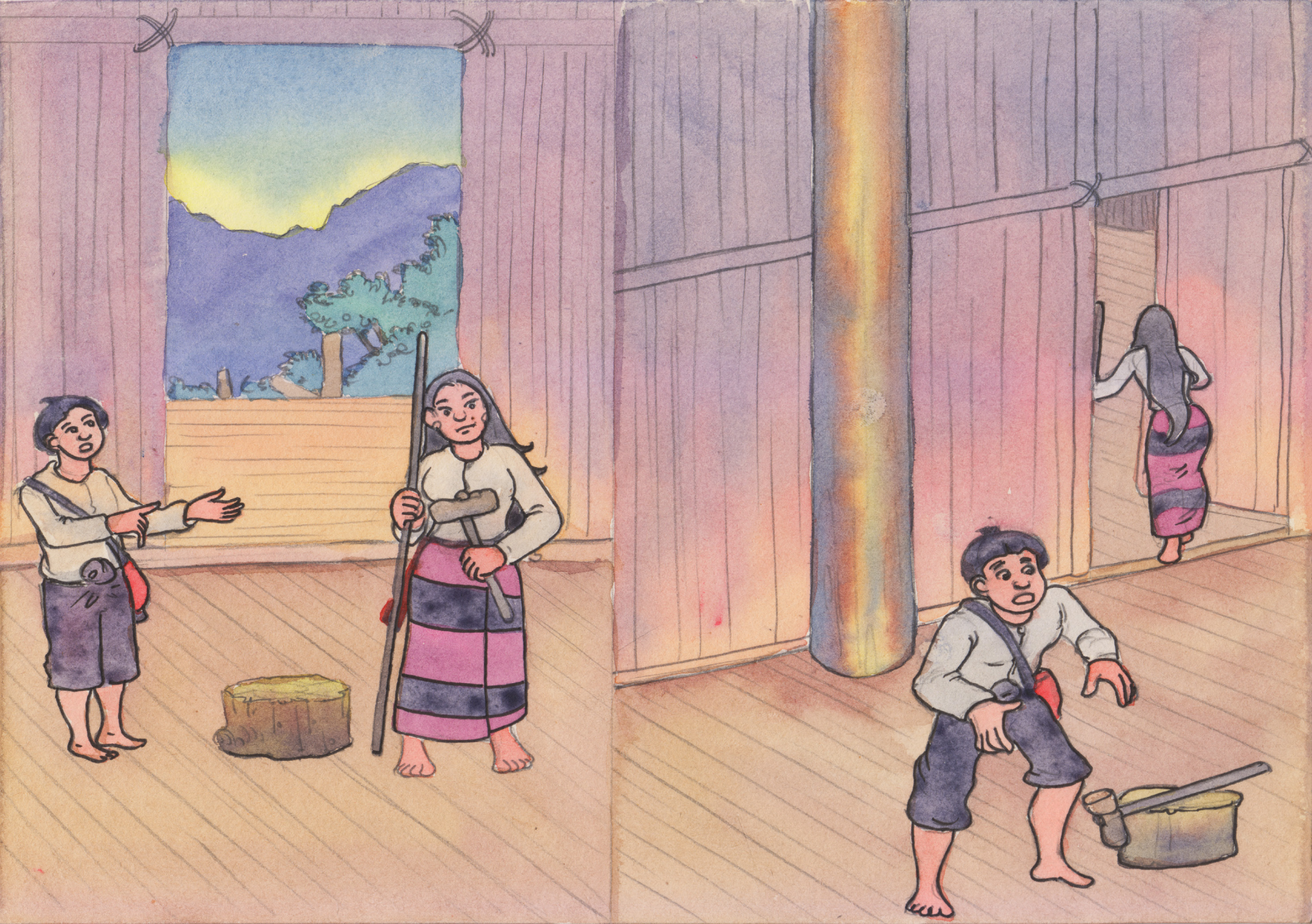
Ngut yang nta nhku de bai woi shang nna she,

sumdu langai mi madun nna,

“Ma e, ndai sumdu hte dik dik ngu adup dat nna”

“Nang hpa tsun yang hpa byin wa ai baw sumdu re,” ngu tsun dan ai da.

Ma mung hpyi hpai num tsun ai hpe atsawm matsing da sai da.



Matut nna mung, gawk de bai shang wa nna she,

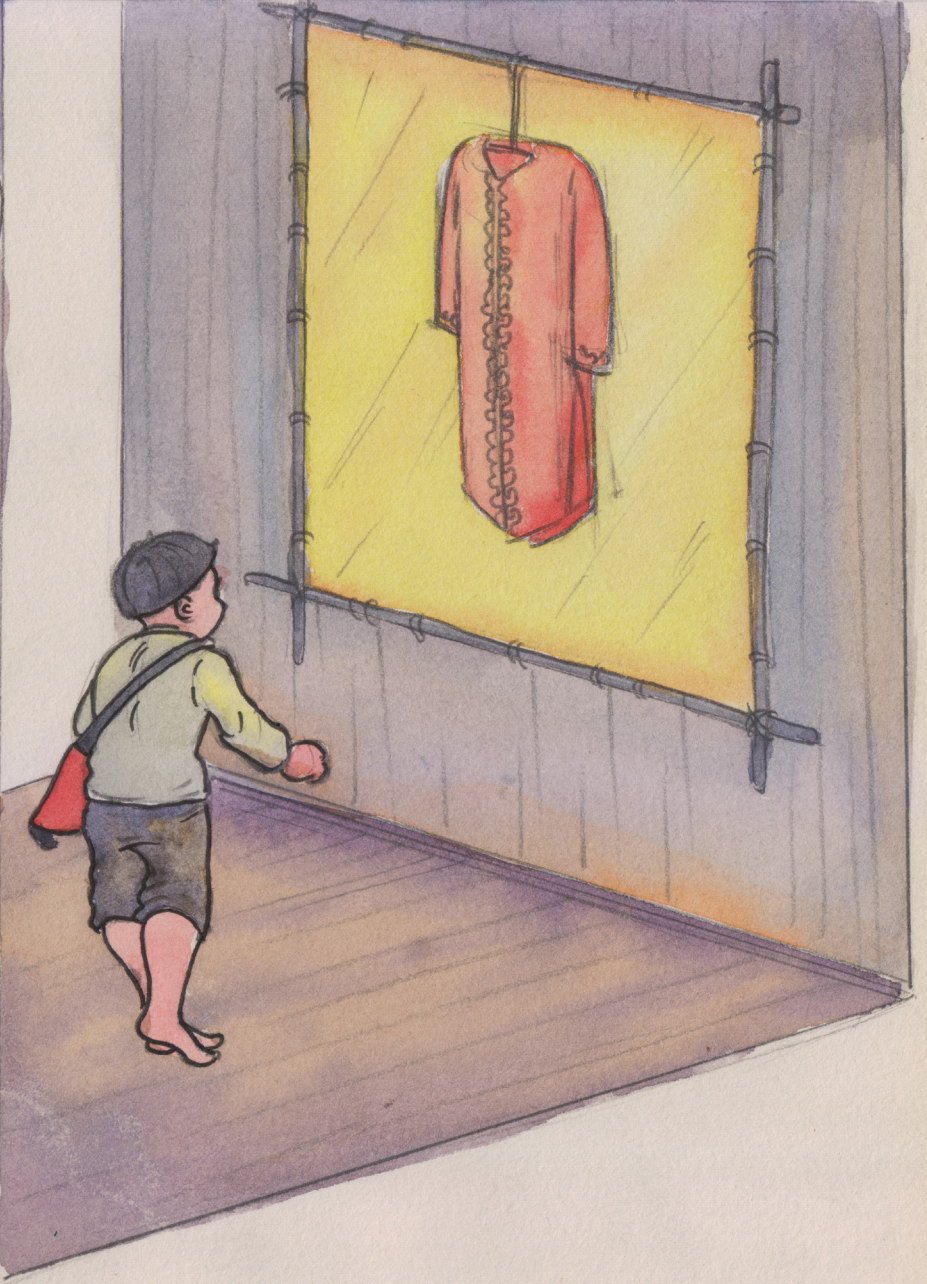
palawng langai mi hpe madun nna,

“Ma e, ndai gaw Su Myen Lawng ngu ai palawng re.”

“Ndai hpun dat jang gaw pyen chye ai.”

“Pyen wa lu ai baw palawng re,” ngu nna tsun dan ai shaloi

ma dai mung atsawm matsing da ai da.



Bai nna, dai hpyi hpai jan gaw yi sa sa re ai da.

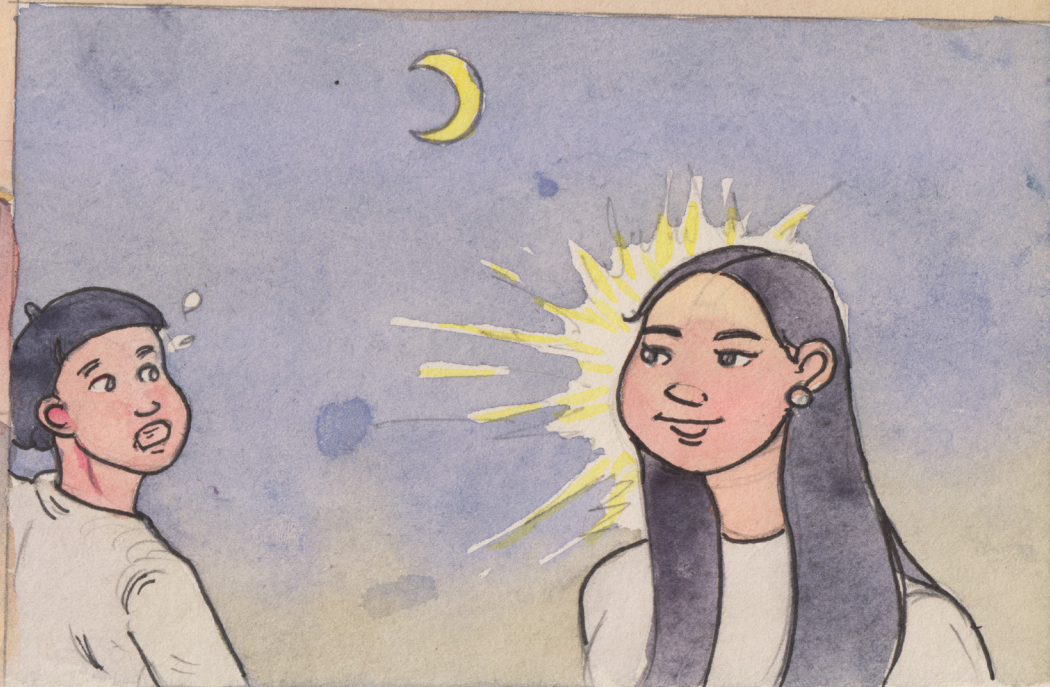
Dai zawn yi sa sa re ai shaloi gaw, kasha hpe

“Ma e, dai ni gaw nu hpang hkrat na re,”

ngu tsun da kau ai shani gaw jau jau wa wa re ai da.

“Ma e, dai ni gaw nu jau jau wa na re,”

ngu tsun ai shani gaw hpang hkrat wa wa re ai da.



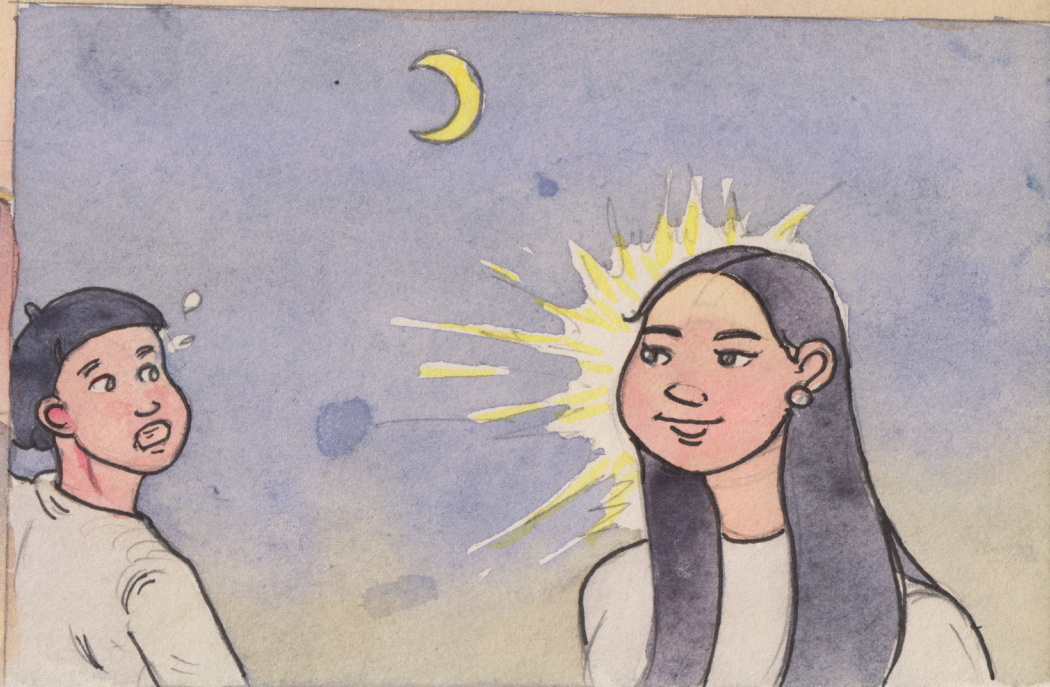
Dai zawn kanu hpang hkrat wa ai shani gaw

grai tsawm na wa wa re ai da.

Dai hku byin byin rai yang gaw, dai shabrang ma gaw

“Nu, ndai gaw hpa baw rai nna hpang hkrat na nga ai shani gaw
jau jau wa.”

“Jau jau wa na nga ai shani gaw hpang hkrat hkrat re ai gaw
hpa baw re kun,” ngu nna



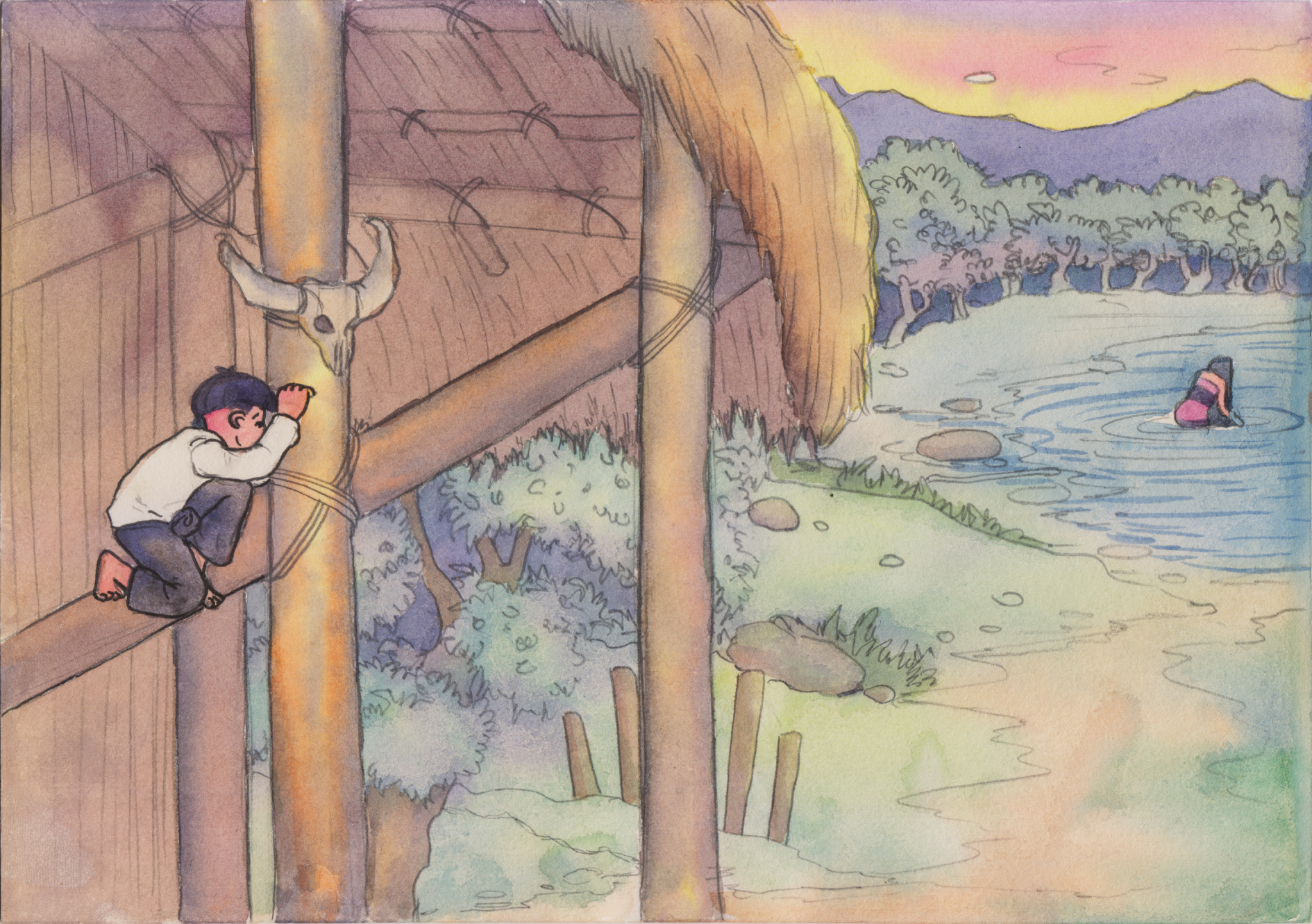
Hto nta htinggan kaw lung nna mada yu yang gaw

kanu gaw wo nam sanita hka ngu ai kaw hka shin taw ai da.

Dai hku hka shin dat yang

grai tsawm wa ai hpe mung shi mu la rai nna

dai hpe mung matsing da ai da.



Lani mi na nhtoi hta gaw, kanu yi sa ai ten hta,

dai ma shabrang gaw “Um... ngai ndai kaw sha nga yang n byin sai,”
ngu nna

shi myi di gun da ai namlap masum mung la gun,

kanu madun dan da ai sumdu hpe mung la gun,

ngut nna Su Myen Lawng palawng hpe ma hpun la rai nna

pyen hkawm mat wa sai da.



Shana maga kanu nta de bai wa ai shaloi gaw

ma hpe n mu ai majaw,

kanu gaw grai yawn ai da.



Rai tim, shi mung chye pyen ai hte kasha sa ai lam de hkan nang
sa mat ai shaloi gaw

kasha hpe dep hkyen wa sai da.

Dai zawn kanu dep hkyen wa ai shaloi gaw,

wora la kasha gaw shi kaw lawm ai namlap langai mi hpe kabai dat nna

“Sumbra shagawng e grang rai u!” ngu dat yang,

kaja sha kanu hte kasha na lapran kaw grai tsaw ai sumbra shagawng
grang rai mat ai da.



Rai tim, kanu gaw

“Dai ngai sharin ya ai hpaji sha wa,” ngu nna

shi na ningwawt hte hpat di dat yang,

sumbra shagawng gaw mat mat ai da.



Kasha mung matut nna, namlap langai bai shaw la nna,

“Wan shagawng e grang rai u!” ngu dat yang,

kaja sha shan lahkawng a lapran kaw wan shagawng din mat ai da.



Dai hpe mung kanu bai

“Dai ngai sharin ya ai hpaji sha wa,” ngu nna,

shi na ningwawt hte bai hpat di dat yang,

dai wan shagawng mung mat mat ai da.



Dai shaloi, kasha gaw h pang jahtum ngam ai namlap langai hpe
shaw la nna kabai dat let,

“Hka shagawng e grang rai u!” ngu dat yang,

kaja sha bai hpyi hpai num hte kasha shabrang na lapran kaw

grai dam lada ai hka shagawng din mat ai da.

Hpyi hpai ngu ai gaw hka hpe gaw n dang ai da.



Dai shaloi kanu gaw

“Ma e, anhte hpyi hpai amyuu ni gaw hka hpe n dang ai.”

“Ngai ndai hpe n lu rap sai.”

“Dai re majaw gaw nang mung kam ai de sa wa nu.”

“Nu gaw ndai kaw si mat sana,” ngu nna

shi na sinda hpe lahtum rai nna si mat wa ai da.



Dai zawn rai nna kanu hpyi hpai num si mat ai hpang,
dai shabrang wa gaw matut pyen mat wa ai shaloi gaw,
hkawhkam mungdan langai mi de du mat wa ai da.

Dai zawn du mat wa ai shaloi gaw,
shana maga de gaw hkawhkam shayi sha ni hka shin nna wa ai da.

Dai shabrang wa gaw hkawhkam shayi sha ni hka shin nna wa ai lam
kaang kaw nda pan rai nna galeng taw ai da.



Dai zawn galeng taw ai shaloi,

dai shabrang wa mung, numhpu ni, dap ni chya rai nna amut amat hte
grai n tsawm ai hku na galeng taw ai da.

Hkawhkam kasha kana ni yawng gaw hpa mung n tsun ai sha

dai shabrang Chyamut Wa galeng taw ai hpe shingkawt shingkawt rai
nna wa mat wa ai da.



Hpang jahtum na hkawhkam shayi sha Nang Yut ngu ai wa gaw
kana ni zawn n shingkawt ai sha, dai Chyamut Wa hpe tsun ai da.

“E, tsa e, ngai lai wa na matu lam kachyi mi sha pyi yen ya rit,”
ngu tsun ai da.

Rai tim, Chyamut Wa mung n yen ya ai sha, dai hku sha nga taw ai da.

Nang Yut mung n shingkawt ai sha

dai shabrang Chyamut Wa yen ya na hpe sha la taw ai da.



Jan mung du wa re shaloi gaw kalang bai, "Tsa e, jan mung du wa sai."

"Ya ngai nta de wa ra sai."

"Nu ni wa ni myit n pyaw na ra ai," ngu tsun dat yang she,

kachyi mi sha yen ya ai hte

dai hku lai nna nta de wa mat wa ai da.



Dai hku Nang Yut nta de n du wa shi ai shaloi,

kanu yan kawa gaw kana ni hpe kasha kaji dik htum hpa majaw
n du wa shi ai lam hpe san ai da.

Dai shaloi kana ni gaw

“Wo lam kaw chyamut chyamat san ai la wa kaw na n lu lai nna dai kaw
nga da sai,” ngu htai ai da.



Dai hku rai nna, Nang Yut gaw grai hpang hkrat nna she nta de
du wa ai shaloi gaw,

kanu yan kawa gaw grai tsang ai hte

“Ma e, nang hpa majaw, hpang hkrat ai rai?” ngu san yang,

kasha Nang Yut gaw Chyamut Wa lam kaw pat taw ai majaw
re ai lam hte

ya she loi yen ya nna lu wa ai re lam tsun dan dat ai da.

Kanu yan kawa mung kasha du wa sai re majaw, hpa n tsun ai sha
apyaw sha matut nga ma ai da.



Lani mi hta gaw, dai hkawhkam shayi sha ni gaw nga bai sa hkwi
ma ai da.

Kanu yan kawa gaw Nang Yut hpe grau tsaw ra ai zawn re majaw,

kana ni gaw Nang Yut hpe loi n ju wa ai hte, nga hkwi ai shara lata ai
shaloi,

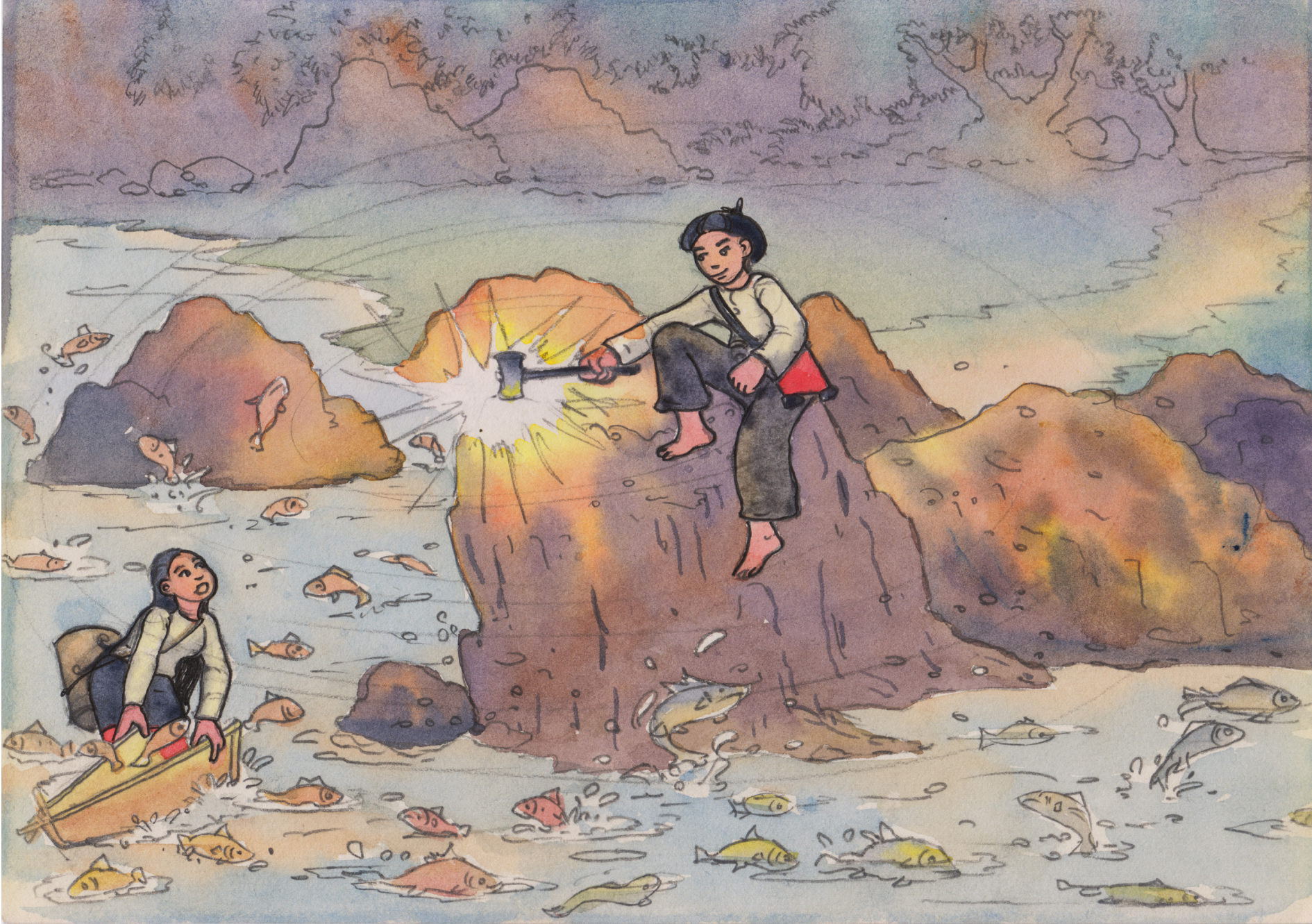
Nang Yut hpe gaw nga nau n lu lu re ai shara kaw sa hkwi shangun
ai da.

Dai zawn nga hkwi taw ai shaloi,

myi na shabrang Chyamut Wa gaw hka ni shin kau rai nna grai tsawm
ai hte sa wa ai da.



Nang Yut hpe mu nna “Hpa baw galaw nga ai rai?” ngu yang,
Nang Yut mung nga hkwi taw ai rai tim, nga n lu ai lam tsun yang,
dai Chyamut Wa gaw shi na sumdu hte adup dat nna
“Ndai laing kaw nga ni hpring wa u ga!” ngu dat yang,
kaja sha Nang Yut gaw gun she n dang hkra nga ni lu wa ai hte
nta de jau jau wa mat wa sai da.



Kana ni mung nga lu ai shara kaw hkwi ai ngu tim nga n lu ma ai da.

Dai shabrang Chyamut Wa mung dai kana ni nga taw ai maga
bai sa wa yang gaw

kana ni gaw shabrang wa grai tsawm taw ai hpe mu nna nat shadu ai
hte,

shanhte gaw “E, nat shagya e, anhte mung nga hkwi ai wa nga n lu ai,”
ngu tsun yang,

shi na sumdu hte bai adup dat nna she nga ni jahpring ya ai da.



Dai majaw kana ni mung nga ni la nna nta de wa sai da.

Rai tim, shanhte nta de du ai shaloi gaw,

Nang Yut gaw grai jau du taw sai majaw,

shi na nga ni hpe shadu ai gaw shadu, jahkraw ai gaw jahkraw,

banau nau ai gaw nau, ka-i ai gaw ka-i rai nna, galaw taw sai da.

Dai hku rai nna, kana ni kanu yan kawa hpe nga ni wa jaw ai shaloi gaw
kanu yan kawa tsun ai da.



“Nanhte a nnau Nang Yut gun wa ai nga ni grai law ai hte”

“Anhte ni ya ndai kaw shadu mung shadu da sai.”

“Jahkraw mung jahkraw da sai.”

“Banau nau, jahkri hkri galaw nga ga ai,” ngu tsun dan dat jang

dai kana ni gaw gaya mung gaya ai hte,

shanhte a kanau Nang Yut hpe grau nna n ju wa sai da.



Dai zawn rai nna, kanau Nang Yut hpe kana ni grau n ju wa ai hte

matut nna nga nga rai yang gaw,

lani mi na aten hta, dai shanhte na mungdan hpe madu la na matu

grai n-gun kaba ai hpyen ni htim sa wa sai da.

Dai majaw, dai num kasha ni a kawa hkawhkam du wa gaw

grai myit ru taw nga sai da.



Dai shaloi, myi na shabrang Chyamut Wa gaw dai hkawhkam wa kaw sa wa nna she

“Hkawhkam du wa e, nang hpa majaw myit ru taw nga ta?” ngu wa san ai da.

Dai shaloi hkawhkam du wa gaw, “Nang na ai hte maren,”

“Grai n-gun kaba ai hpyen ni, anhte a mungdan hpe zing madu la na matu htim sa wa sai.”

“Anhte kaw gaw shanhte daram hpyen n-gun mung n nga ai.”

“Dai majaw, myit ru nga ai re,” ngu htai ai da.



Dai shaloi, Chyamut Wa gaw

“Dai na majaw nga yang gaw hkum myit ru nga u.”

“Majan dang hkra ngai galaw ya na.”

“Dai hku galaw ya yang, ngai hpe hpa baw jaw na rai?” ngu san yang,

hkawhkam du wa gaw “Nye kasha hte jaw sha na,” ngu tsun dat ai.



Dai shaloi, Chyamut Wa gaw nam de sa mat wa nna,

shi na sumdu hte

“Gai, hpyen hpung kaba byin wa u ga,” ngu let adup dat jang,

mana maka re ai hpyen hpung kaba ni pru wa ai da.



Hpyen hpung kaba ni pru wa ai hte

shi hpyen hpung kaba hte rau

hkawkam du wa kaw mung wa madun ai da.



Hkawhkam du wa kaw wa madun rai nna,

ngut ai hte sa htim gasat wa ai hpyen ni yawng hpe wa gasat dang la
kau ai da.



Gasat dang ngut ai majaw,

shi na hpyen hpung hpe mung

sumdu hte bai adup nna shamat kau dat ai da.



Dai hku rai nna, shi gaw hkawhkam wa hpang de sa wa ai shaloi gaw
hkawhkam wa gaw “Majan dang hkra galaw ya ai majaw, chyeju kaba
dik sai.”

“Ngai ga sadi jaw da ai hte maren, nye kasha Ma Kaw hpe la u,” ngu
tsun dat ai da.

Dai shaloi shabrang wa gaw “Ma Kaw hpe n ra ai,” ngu tsun dat ai da.

Bai hkawhkam wa gaw kasha ni langai hpang langai hpe madun tim,
dai shabrang wa mung n hkap la ai lam hkrai tsun ai da.



Dai shabrang wa n hkap la ai lam hkrai tsun rai nna,

hpang jahtum kasha kaji dik htum Nang Yut hpe madun yang she

dai shabrang wa gaw Nang Yut hpe tsaw ra ai hte hkap la ai da.

Dai majaw, hkawhkam du wa mung dai shabrang wa hpe shi kasha
Nang Yut hpe mung jaw,

shi a mungdan chyen mi mung jaw rai nna,

shan lahkawng gaw grai pyaw let nga mat wa ai da.



WUNPAWNG MAUMWI MAUSA

Kachin Folktales

